

CHILD FRIENDLY CITIES AND COMMUNITIES

Recognition assessment outcome report:
London Borough of Redbridge

Part of UNICEF's Global



Child
Friendly
Cities
Initiative



Child
Friendly
Cities &
Communities

UNITED KINGDOM

unicef 

INTRODUCTION

Child Friendly Cities & Communities (CFC) is a UK Committee for UNICEF (UNICEF UK) programme that works with councils to put children’s rights into practice.

The programme aims to support councils and their partners to embed a child rights-based approach across local strategy, policy, service delivery and public spaces.

Over three to five years a council, their local partners, and children and young people work together on an ambitious journey towards international recognition as a UNICEF Child Friendly City or Community.

Child Friendly Cities & Communities is part of UNICEF’s global Child Friendly Cities Initiative, which reaches over 30 million children in close to 50 countries.

Summary

The London Borough of Redbridge (‘Redbridge’) partnered with UNICEF UK towards the end of 2019 and have since been taking part in UNICEF UK’s Child Friendly Cities & Communities programme, developing and implementing strategies for advancing children’s rights, and working towards achieving ‘Child Friendly’ status, as recognised by UNICEF.

Following assessment of progress, UNICEF UK is granting the **London Borough of Redbridge full recognition.**



ABOUT RECOGNITION

Recognition is the final stage of the Child Friendly Cities & Communities journey.

Recognition signifies that UNICEF publicly **recognises** that a council and its local partners have taken significant and sustainable steps towards advancing the human rights of children and young people growing up in their community. **'Child Friendly' status recognises progress, not perfection.**

Recognition focuses specifically on the progress a council and its partners have made within the scope of the Child Friendly Cities and Communities programme and the locally selected badge areas, rather than providing a comprehensive assessment of all services affecting children and young people in the borough. Recognition instead considers how effectively the ambitions, actions and commitments set out through the programme have been implemented.

Cities or communities become eligible for recognition after implementing their CFC action plan for a minimum of 2 years. The action plan sets out how change will be achieved across six thematic 'badges,' or priority areas, which are chosen in collaboration with children and young people.

Councils and their partners are asked to demonstrate, through relevant, good quality evidence, how they have achieved the ambition set out in their CFC action plan, what they have learned, and how they plan to take forward the commitment to realising children's rights across the city or community once 'Child Friendly' status has been achieved.

At the end of their programme journey, cities and communities are asked to:

- Submit documentation setting out their case for recognition.
- Submit detailed evidence against the outcomes and indicators in their CFC action plan.
- Host a live assessment, during which UNICEF UK's independent CFC Recognition Advisory Panel holds exploratory discussions with key representatives from the area, including children and young people.

There are four possible assessment outcomes:

Recognition: 'Child Friendly' status	The council and its partners have made sustainable progress across all their priority areas and set out a robust plan for building on this progress. Child Friendly status lasts for three years.
Conditional Recognition	The council and its partners are required to complete actions, expand their sustainability ambitions, address gaps or submit missing evidence within an agreed time frame before being officially and publicly recognised.
Suspended Assessment	Evidence is missing or incomplete, but a promising case has been put forward. Assessment will be repeated later.
No Recognition	The quality of evidence poor, the sustainability plan is unconvincing, local commitment is unconvincing.

Recognition Assessment Framework

Assessment of evidence, progress and impact is carried out by UNICEF UK and scrutinised by the independent CFC Recognition Advisory Panel. The United Nations Convention on the Rights of the Child (UNCRC) is the foundation of the CFC assessment framework. It is realised through the seven principles of a **child rights-based approach**:

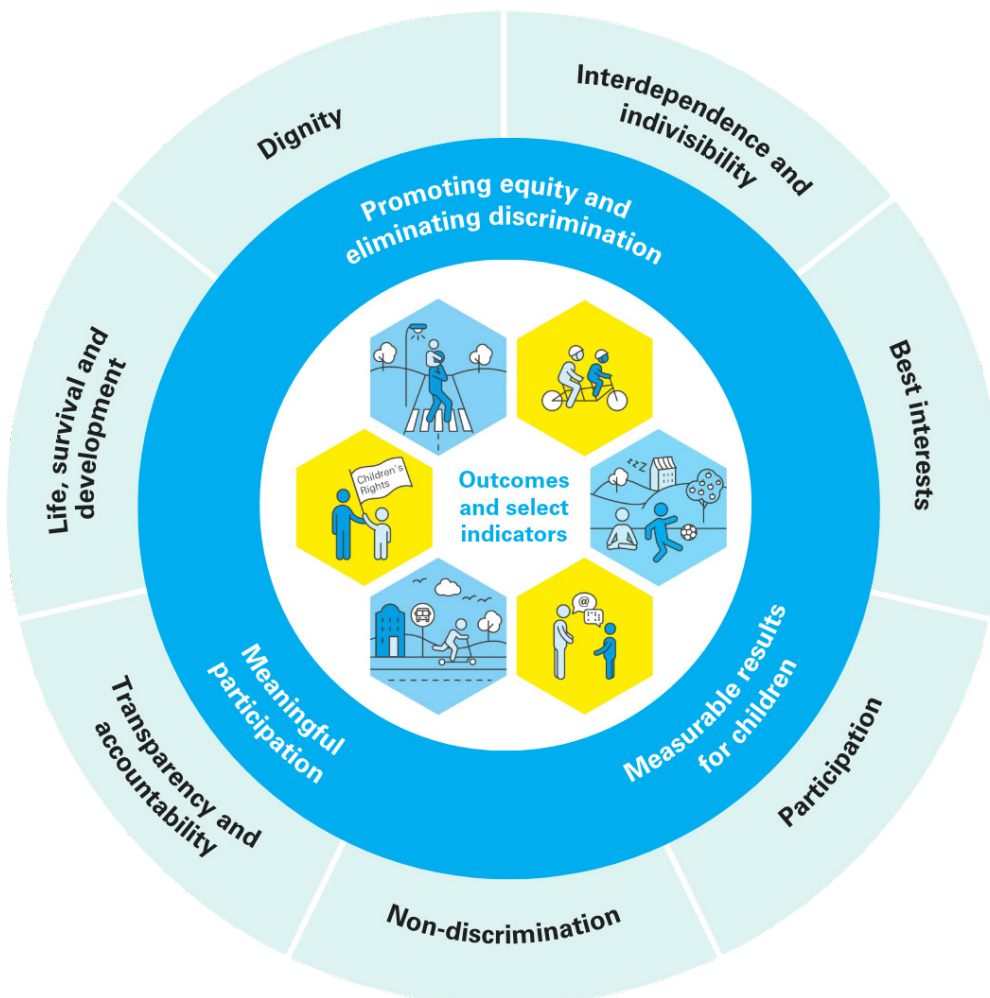
- Dignity
- Transparency and Accountability
- the Best Interest of the Child
- Non-Discrimination
- Participation
- Life, Survival and Development
- Interdependence and Indivisibility.

These principles are reinforced by the global Child Friendly Cities Initiative (CFCI) minimum criteria: **measurable results for children**, including quality, relevant, and significant data; **meaningful and inclusive child participation**; and a **demonstrated dedication to eliminating discrimination**.

Finally, the specific outcomes and indicators set out in the Redbridge's CFC action plan against locally chosen 'badges' are at the centre of the framework against which progress is assessed.

The image below shows the Recognition Assessment Framework; the seven principles of a child rights-based approach are around the outer ring, the global CFCI minimum criteria in blue, and the icons representing the community's badge choices (Cooperation and Leadership, Communication, Culture, Healthy, Safe & Secure and Place. They also chose to have a 'golden thread' of Equal and Included threaded through each of the badge areas) are at the centre.

CFC Recognition Assessment Framework



ABOUT REDBRIDGE

Redbridge joined the programme towards the end of 2019. The community's CFC action plan priority areas, as chosen by the community including children and young people, were **Cooperation & Leadership, Communication, Culture, Healthy, Safe & Secure, and Place**. They also chose to have a 'golden thread' of **Equal & Included** threaded through each of the badge areas. Since the creation of the local Child Friendly action plan, stakeholders across Redbridge have been participating in regular progress review meetings, to highlight and monitor progress and challenges in each of the badge areas.

In early 2025, as part of the assessment, Redbridge submitted core documentation including its story of change, a summary capturing children and young people's views on Redbridge's progress and a draft sustainability plan. Additionally, a significant number of pieces of evidence were presented including survey data, case studies, performance data, policies and different initiatives.

On Tuesday 29th April 2025, Redbridge hosted a live assessment day, where the CFC RAP met with children and young people and stakeholders (including political leaders, strategic officers and colleagues from partner organisations) across the borough to hear first-hand the experience of child rights locally. This included local site visits to Ilford High Road, Box-up Crime and Hainault Forest Country Park.

UNICEF UK would like to thank everyone who was involved in this process, especially the children and young people.

Progress across all six priority areas

The evidence demonstrates good progress across all six priority areas, including:

- **Children and young people's opinions and experiences woven through evidence**, this includes the Children and Young People's Survey 2024, where over 800 children responded to core questions about their experience of living in Redbridge (including the environment, health and safety) and their rights. Additionally, the intentional gathering of demographic data and disaggregating of results has provided a more nuanced understanding of the non-discrimination principle in practice;
- **Involving children and young people in decision making fora**, including enabling a direct line of communication to political leaders, informing the local climate action plan and providing youth governance for the CFC programme locally;
- **Commitment from leadership** in the early phases of the programme, including the Chief Executive and Cabinet Member for children and young people participating in child rights training;
- **Upskilling the workforce in children's rights**, with an offer of ongoing training and several awareness raising campaigns and events. This includes over 400 individuals being trained in children's rights since 2019, with nearly 100 further engagements in specialist child rights training, such as engaging with children and young people, briefings on informed consent and Child Rights Impact Assessments (CRIAs). Additionally, over 2,000 have been trained in autism awareness and a further 400 in trauma-informed practice;
- **Increasing the number of School Streets** across the borough to over 20. These are clean air zones, aimed at reducing air pollution directly outside school premises, protecting children from the dangers of traffic at the school gate and encouraging families to engage in active travel to and from school;
- **Adopting a whole systems approach to tackling obesity**, involving colleagues across Public Health, Vision Redbridge Culture and Leisure, schools and children, leading to demonstrable evidence of weight reduction for some children. The approach connected with the School Superzones initiative, which restricts fast food establishments around schools and promotes the Healthy Start Scheme with local businesses;
- **Broadening the offer of free and accessible activities** for children and their families through Vision Redbridge Culture and Leisure during the holidays. With 473 available sessions in 2022, increasing to 758 in 2024, and a year-on-year increase in engagement and participation by children and young people, including children identified as having SEND;
- **Increasing the number of Play Streets** from 4 in 2018 to 32 in 2024; supporting communities to close their streets to traffic and support children's right to safety, leisure and play;

- **Driving innovation in Early Years** through the development of the Redbridge Early Years Strategy 2023-2028 and partnering with the Blackpool Better Start initiative;
- **Child-friendly planning and regeneration**, including local planning policy reflecting locally developed child-friendly placemaking principles, connection with external partners, such as Make Space for Girls, and expectation on external partners of advancing children's rights and supporting the direct involvement of children and young people. For example, children and young people were part of Seven Kings Community and Health Hub co-design process sessions with architects and service areas of the council;
- **Addressing sexual harassment** across the borough through a multi-faceted approach, including engagement with schools and community provision, including becoming the first London borough to utilise a Public Space Protection Order. This includes demonstrable evidence of a drop in crime rates, with a 21% decrease in offences such as harassment and sexist behaviour.

Recommendations

The assessment identified some recommendations for consideration by Redbridge in the next phase of its child rights development:

Develop a local child rights-based participation and engagement strategy

The assessment demonstrated a wide variety of activities for children and young people to engage in across the borough, including opportunities for some to participate in youth governance fora, such as the Youth Council and the SEND forum. Building on this positive foundation, the next phase of development involves bringing these activities together into a coherent, child rights-based participation and engagement.

This will help ensure that participation becomes more consistently rights-based, with clearer structures for including a greater proportion of minoritised and seldom-heard children and young people. Strengthening this reach will support youth governance groups to become increasingly representative of the local child and youth population, enabling deeper understanding of the experiences of the most vulnerable.

The next stage also involves strengthening feedback loops so that engagement moves beyond consultation and leads to visible, meaningful influence. This includes responding to findings from surveys and other engagement activities. For example, the most recent Child Friendly survey identified differences in experiences by ethnicity; using this disaggregated data in a rights-based way will help explore and address any inequalities or discrimination.

Embed Child Rights Impact Assessments (CRIA) across Council decision making fora

A CRIA is a tool that can be used to mainstream children's rights principles and the articles of the UNCRC into strategic planning and commissioning, policy development, problem-solving, programme prioritisation, budget setting, and service design, delivery and evaluation. Early work to introduce Child Rights Impact Assessments offers a strong basis for embedding children's rights within governance and planning. The next stage of development is to pilot CRIA in identified departments or areas of work, enabling Redbridge to build confidence and clarity in how CRIA can be applied proportionately and effectively.

Through specifying priority departments and workstreams for the CRIA pilot will help ensure that the rollout is both realistic and achievable. This gradual, piloted approach will support CRIA to become a routine mechanism within strategic planning, commissioning, policy development, programme design and evaluation.

Identify how cultural change will be understood and monitored

The assessment day highlighted that Redbridge has already delivered extensive child rights training and taken steps to promote shared understanding across the workforce. The next phase is to articulate more clearly what cultural change looks like in practice and how it will be monitored over time.

This includes identifying how the application of a child rights-based approach can be observed in day-to-day practice, decision-making and interactions with children, and how progress

and consistency will be captured. For example, this may involve monitoring the use of child rights-based language across services or establishing indicators that reflect the principles of a CRBA.

This also applies to ongoing work under the Healthy badge. Ensuring that planned activity explicitly links to the seven principles of a child rights-based approach will help illustrate how rights-based practice is being adopted within health-related work. Developing a more inclusive, rights-based approach to health engagement would support children and young people to provide meaningful feedback about their lived experience and to influence the services they receive.

Overall, Redbridge has established strong foundations that demonstrate a clear and growing commitment to children's rights. There are several areas of inspiring practice, many of which provide a solid platform from which to take forward the next phase of development. Taken together, these developments show that children's rights are becoming increasingly embedded across local governance, policy development and community practice, providing a strong platform for the next phase of the Child Friendly journey. The sustainability plan already also addresses some of the recommended areas for progress to ensure all conditions are meaningfully accounted for and incorporated into a coherent approach moving forward.

Area SEND Inspection Outcome

Redbridge has recently received an Area SEND Inspection outcome in which Ofsted and the Care Quality Commission identified significant systemic challenges across education, health and social care for children and young people with SEND.

In response, Redbridge has developed a comprehensive Priority Action Plan that addresses identified areas for priority action. This plan establishes a framework for improvement, setting out activity designed to strengthen the quality, timeliness and coordination of SEND services over time. Early priorities include work to improve co-production, strengthen Education, Health and Care Plans, enhance communication and information-sharing across the system and ensure that children and young people receive timely support.

This work is further reflected in the Child Friendly Redbridge Sustainability Plan, which aims to embed children's rights across the wider system. While improvement work is at an early stage, the plans developed indicate increasing alignment with a rights-based approach, particularly through commitments to co-production, improved accountability and greater attention to the lived experiences of children and young people with SEND. The sustainability plan also sets out actions intended to ensure that children and young people with SEND are more consistently heard, involved and supported, including those whose experiences are most affected by the issues highlighted in the inspection.

The SEND inspection findings relate specifically to the performance of the local SEND system and sit outside the scope of the Child Friendly Cities and Communities recognition framework. Recognition assesses progress within the programme's chosen badges and does not provide a comprehensive evaluation of all services for children and young people in the borough. UNICEF Child Friendly Recognition acknowledges the progress a city or community has made within the scope of the programme and its chosen badges. It is not an endorsement of the overall child rights situation across the whole city or community. Recognition reflects a commitment to using children's rights as a tool to guide decision-making, demonstrated through real, evidenced impact for local children and young people.

Assessment outcome

On balance, Redbridge has established a strong and credible foundation for embedding children's rights across the borough, demonstrating meaningful progress in its chosen badge areas while taking clear and actionable steps to address recent challenges identified through the SEND inspection.

The Sustainability Plan shows a focus on consolidating and deepening this progress, ensuring that the structures, culture and commitments developed through the Child Friendly Cities and Communities programme are sustained over time, with particular emphasis on participation, accountability and improving outcomes for children and young people, including those with SEND.

Based on these commitments and progress achieved to date, Redbridge is awarded UNICEF Child Friendly status.

Badge by badge review

Redbridge's evidence was assessed against the following criteria: the quality, relevance and significance of the evidence; the extent to which it demonstrates child rights-based practice (see above) and meets the minimum global CFCI standards (Results for Children, Meaningful and Inclusive Child Participation, Strengthening Equity and Eliminating Discrimination); and the extent to which it supports Redbridge's progress against the specific outcomes and indicators set out in the community's CFC action plan.

Each of Redbridge's badges, or priority areas, are set out below. A table summarises the specific activities and strategies that Redbridge adopted, the outcomes they were working towards, and the indicators they selected to measure progress and impact.

Before each table is a short summary of the community's assessed progress.

Please note, in the tables we have sometimes used the following abbreviations due to space constraints:

- **CYP** - Children and young people
- **CR** - child rights
- **CRBA** - child rights-based approach.

Progress

The Communications badge highlighted a range of work to ensure communications efforts are considerate of children and young people. This included evidence showcasing staff child rights training logs, engagement plans with children and young people, Rights Week Communication Reflection Pack and video footage, Committee and Cabinet report analysis and findings from the Children and Young People's Survey 2024. The training log suggests that ten communications staff have been trained in children's rights since the programme launched in 2019, however it is of note that many colleagues outside of the communications team, who have also received child rights training, have been involved in the design of child friendly resources and awareness raising, such as colleagues across the Vision service.

Notably, there were a plethora of engagement opportunities for children and young people to participate and learn more about their rights referenced throughout the assessment. This includes children from more marginalised groups such as care experienced children. Significantly, Rights Week in 2024 demonstrated opportunity for children to learn about their rights and participate in reflective evaluation. Whilst the 'Child Friendly Redbridge Engagement Plan 2018-2025' has a high volume of sessions, and covers a wide variety of groups and areas, an overarching strategy for working with children and young people across the borough is absent.

The Children and Young People's Survey 2024 highlighted that more than 90% of respondents 'agreed or sort of agreed that they understand their rights and how to talk about them'. With regards to children reflecting on whether they can access information, this could arguably be triangulated with the very high level of agreement among respondents that they understand their rights and how to talk about them, with the fact that more than half of respondents agreed that they 'understand how to access information and support that keep [their] mind and body healthy'.

Included within the evidence was an analysis of Committee transcripts (a random selection of 25% of reports, across 2023/4) and identifies the number of references to children and children's rights made throughout Committee and Cabinet level meetings, it suggests an increasing socialisation of and commitment to a child rights-based approach in action. With 80 references identified, the evidence captures how implications for the Borough's ambition to be child friendly are considered and includes highlights such as how children and young people were consulted with as part of budget consultation and changes to SEND provision.

COMMUNICATION

Indicators	<p>Increase in child and young people friendly information, advice and guidance available.</p> <p>Greater awareness of how children and young people access information across the Partnership.</p> <p>20 comms, media and engagement officers trained across the partnership.</p> <p>Clearly set out approach on how to engage with diverse groups of children and young people</p>	<p>Increase in the number of children and young people who know about their rights.</p> <p>No of additional child rights-based approach young people engagement events and activities relating to the Child Friendly programme in Redbridge.</p> <p>All Cabinet and Council decisions have the impact on child rights-based approach considered and set out.</p>	<p>% increase in the number of child rights-based approach that engage across the Council and UNICEF partnership.</p> <p>Children and young people from a wide range of backgrounds can access the information they need in the way they prefer.</p>				
Outcomes	<p>Children and young people can find the information they need.</p>	<p>Information about children's rights is shared with children, young people and adults in different ways.</p> <p>Children and young people know and value their rights.</p>	<p>The way we communicate with children and young people is accessible and inclusive and reaches a wider range of children and young people.</p>				
Strategies	<p>Create a regular children and young people's newsletter for parents and families is shared across the borough</p> <p>Improve information, advice and guidance (IAG) for young people (pilot project), with regular assessments of services that need to be made more young people friendly</p> <p>UNICEF UK Communications training across partnership and local media</p> <p>Embedding children and young people engagement (across diverse groups, needs and ages) into our Council-wide engagement approach</p>	<p>Create opportunities to celebrate children and young people and children's rights through events, communications and media</p> <p>The partnership report to children and young people on the action plan annually (using a report card format)</p> <p>Annual sharing event by partnership with child rights-based approach</p> <p>Monitor the number of major decisions where impact on children and young people has been considered</p>	<p>The Communication teams from the Councils and partners engage directly with the Youth Council and other youth groups, including to learn from them and sense check their Comms approaches and materials</p> <p>Develop resources and toolkits that can be shared widely to support the child rights-based approach engagement approach</p> <p>Implement and review the child rights-based approach with children and young people to gauge effectiveness and responsiveness to changing needs in the borough</p>				
CRBA	Dignity	Participation	Best Interest	Life, Survival, Development	Interdependence and Indivisibility	Non-Discrimination	Transparency and Accountability
CFCI Minimum Criteria	Equity and non-discrimination			Data		Participation	

COOPERATION AND LEADERSHIP

Progress

Redbridge has often demonstrated senior leadership buy-in to the programme, with the Chief Executive and Cabinet member for Children and Young People being some of the first to be trained in children's rights locally, although with changes to personnel this has reduced more recently. The assessment highlighted the importance of embedding CRBA across the leadership, especially when there are frequent changes in personnel within leadership roles.

Over the programme journey, as the work to strengthen the champions network has taken hold, the evidence demonstrated a more systemic approach to championing children's rights. The 'Cooperation and Leadership' badge highlights a programme of events and opportunities where senior and political leaders champion children's rights, as well as evidence submitted including a case study illustrating how Elected Members are perceiving the reach and impact of the CFC programme locally.

The forming of Policy Development Committees (PDCs), in particular the Children and Young People's PDC, further strengthened political leaders' relationship to and input related to the CFC action plan. With specific areas of focus including mental health, disproportionality and child friendly, the work of the PDC has shown that core child rights issues, such as non-discrimination, have been aligned with the corporate plan. The evidence included the timeline for the development of the PDC and was complemented by reflections from Elected Members about issues that have been acted upon as a direct result of engagement with children and young people, alongside a child-friendly version of the Annual Scrutiny and PDC report. However, the assessment reflected that there is an absence of a participative feedback loop.

The assessment highlighted children's involvement in the youth democracy project, involvement in youth governance of the CFC programme locally and engagement with Rights Week (with the latter including children being

trained in children's rights). This demonstrated the involvement of children in a youth democracy scrutiny event and further evidenced that there has been a direct line of communication between children and decision makers. Whilst opportunities have been evidenced, they often involve small cohorts of children and young people and it's not clear how the programme of engagement events will be sustained so it is systematically embedded within the culture of the Council. It is clear that certain voices are easier to hear and it would be good to understand the strategic approach Redbridge are taking to remedy this going forward.

More specifically, the inclusion of the responses to the Children and Young People's Survey 2024 illustrated that over 50% of respondents said it was 'mostly true' they 'have a say about the decisions that affect [their] life'. The results provide an opportunity to address inequality going forward, with repeated discrepancies relating to positive responses to the core questions. For example, the question about having a say in decisions, boys responded more positively than girls (54% to 48%). There were also differences in responses from children who are racially minoritised and those with SEND. For example, white respondents were more positive in response to the question about having a say in decisions that affect their life, 63% stating it was 'mostly true', compared to 39% of those identifying as Mixed / Multiple ethnicity. Additionally, 43% of respondents who identified as having SEND agreed with the statement. Therefore, moving forward there is an opportunity to understand these results in more detail and inform Council and partner organisation services to ensure that the non-discrimination principle is better embedded.

COOPERATION AND LEADERSHIP

Indicators	<p>Community leaders publicly champion children's rights and the Redbridge Programme</p> <p>Community leaders have increased visibility to children and young people and the wider community when advocating for children's rights and the Redbridge Programme</p> <p>More children and young people are aware of their rights and the Redbridge Programme</p>	<p>Increase in awareness of the UNICEF programme in Redbridge by: children, young people and parents</p> <p>Three Young Inspectors in place and being trained and developed</p> <p>Fifty young people trained per year on child rights</p>					
Outcomes	Senior leaders across the community become visible champions for children's rights.	Children and young people have an active role in decision-making on matters that affect them (directly and indirectly).					
Strategies	<p>Deliver the Champions programme for Elected Members, partners and young people to raise awareness of the programme and create opportunities for young people to have a say on the things that are important to them</p> <p>CFC in Redbridge is at the heart of the Borough Plan for Redbridge and the Council's Corporate Plan (including the Council's annual Business Planning process)</p> <p>Design project for young people to look at solutions to local issues young people care about, understand what the local council does, the importance of democracy, the importance of voting, and have young people present these issues directly to Councillors</p>	<p>Identify opportunities and events throughout the year for senior leaders to promote CFC and the rights of children</p> <p>The Borough Partnership (consisting of the Council, police, health services and voluntary services) have the programme on their agenda as an annual item for update and to review how their respective organisations are engaging and mainstreaming the principles</p> <p>Bring together all of the youth groups in Redbridge, including young carers, children in care and SEND groups, once a year to share their work, discuss the issues that they want to prioritise and to review and challenge the work of the UNICEF programme in Redbridge</p>	<p>Annual external scrutiny process and meeting with Elected Members takes place with actions shared with relevant service areas</p> <p>Young Inspector scheme where children and young people (from all backgrounds and groups) are asked to inspect services from their perspective, with feedback shared with service areas and follow-up inspections made to assess changes</p>				
CRBA	Dignity	Participation	Best Interest	Life, Survival, Development	Interdependence and Indivisibility	Non-Discrimination	Transparency and Accountability
CFCI Minimum Criteria	Equity and non-discrimination		Data			Participation	

Progress

The assessment highlighted that over 400 staff and political leaders having been trained in children's rights. This includes a cross section of agencies and disciplines; from housing and the voluntary sector, to libraries and Public Health staff. Additionally, over 2000 staff have been trained in autism awareness and over 400 trained in trauma-informed practice. The inclusion of a staff survey highlights a small improvement in knowledge and awareness of children's rights. For example, in answer to the statement 'I know about the UN Convention on the Rights of the Child (CRC) and the rights it lays out', the 2020 workforce survey highlighted that 41% either 'mostly agreed' or 'strongly agreed', compared to 57% in the repeated 2024 workforce survey. It should be noted that a significant proportion (66%) of those who participated in the most recent workforce survey had not completed child rights training and most were from the Council (rather than partner organisations). This could possibly suggest a change in broader culture across the Council, with staff members seeing and hearing children's rights being discussed and championed locally.

Since 2020, there have been Child Rights Impact Assessment (CRIA) briefings provided to Community Hub and Public Health staff, with a view to supporting the systematic roll out of CRIA. However, changes to resources, particularly across Community Hubs, have made this a challenge to implement in practice. It has been an omission throughout the assessment that there are not examples of CRIA being utilised. It is of note that it has been reflected during progress review meetings that in the absence of a CRIA, Democratic Services have included a section in all formal Scrutiny, Cabinet and Council reports that asks officers and decisions makers to consider the impact of their decision on children and young people; it would be good to have seen examples of this within the evidence.

Throughout the assessment of the Culture badge, there was an overreliance on children's participation and engagement being used to describe a child rights-based approach more broadly. Whilst important, it forms just one aspect of the CRBA in action suggesting a lack of nuanced understanding across Redbridge of the principles in practice. For example, the assessment demonstrated an absence of confidence regarding disproportionality across the borough and how a shift in culture may create impact in this area.

CULTURE

Indicators	<p>Staff and partners are aware of the UNICEF programme (80% aware, 50% of Elected Members have received child rights training)</p> <p>Increase in number of staff that have awareness of CRBA and how to practically apply it in their work</p> <p>Increase in staff autism awareness</p>		<p>The Council and partners take a CRBA approach to their business planning and commissioning cycles</p> <p>The Councils and partners have the data, insight and opportunities for engagement with children and young people to effectively understand the needs and aspirations of diverse children and young people in Redbridge</p> <p>The Council and partner organisations attract additional benefits for children and young people, including children with SEND and children in care, in Redbridge via their social value in procurement process</p> <p>CRBA and the voice of children and young people are present in the Council's decision making, and corporate planning processes</p>				
Outcomes	<p>Council staff and partner organisations have a practical knowledge and understanding of the rights of children, including those with additional needs</p>		<p>The child rights-based approach (CRBA) is embedded across the Council including in business planning and commissioning processes</p>				
Strategies	<p>Develop a joint workforce training plan with partners including:</p> <ul style="list-style-type: none"> - Child's rights training - Practitioners/engagement training - Childs Rights Impact Assessment training <p>Cross referenced with this action plan to prioritise partners who will be leading on delivery</p> <p>Monthly autism awareness training</p> <p>Include the UNICEF training offer in the Redbridge Safeguarding Children Partnership (RSCP) and Redbridge CVS training offers</p> <p>SEND workshops for Council staff and partners (Down Syndrome, Dyslexia, ADHD, Asthma)</p> <p>Programme of Members training on Children's Rights</p> <p>Develop a train the trainer programme for organisations across Redbridge for Child's Rights training</p>		<p>Embed the CRBA into the Council's Commissioning Cycle</p> <p>UNICEF UK programme in Redbridge included within the induction process of organisations across the partnership</p> <p>Develop a holistic, Council-wide approach to collating and analysing data about children and young people</p> <p>Routine use of the Childs Rights Impact Assessment across the Council for major decisions and projects</p>				
CRBA	Dignity	Participation	Best Interest	Life, Survival, Development	Interdependence and Indivisibility	Non-Discrimination	Transparency and Accountability
CFCI Minimum Criteria	Equity and non-discrimination		Data			Participation	

Progress

Evidence submitted and reflected on under 'Healthy' was wide-ranging, it included, but was not limited to, impact studies (re. obesity initiative and Play Streets), evaluations (re. Vision Redbridge Culture and Leisure holiday activity programme, 'Mega-Mix'), focus groups with practitioners (re. the impact of the healthy eating campaign), a PDC mental health scoping report, findings from the Children and Young People's Survey 2024, and a peer review of the Early Years Partnership.

The Children and Young People's Survey 2024 highlighted that more than half (65%) overall agreed that '[they] understand how to access information and support that keeps [their] body and mind healthy'. Moving forward, there is the opportunity to repeat the survey to monitor changes in children's views and experiences of health services. This could strengthen a joined up participation and engagement strategy across health agencies to ensure a strategic and connected understanding of children's lived experiences, to inform service design and delivery.

There was demonstrable evidence of a systems approach to obesity, which responds directly to findings throughout the Discovery phase, where tackling childhood obesity was considered a priority in Redbridge. The Mega-Mix evaluations outline the plethora of activities, including free and accessible opportunities, for children and young people across the borough and highlights a year-on-year increase in activities and participation. Additionally, the local Play Streets scheme, supporting children and young people to enjoy the right to 'rest, leisure and play' in their local area, has evolved from four Play Streets in 2018, to 32 in 2024.

The Redbridge Early Years Strategy 2023-28 outlines thematic connections to the CFC action plan. Evidence included the Early Years Strength-based Framework and reference to the partnership with the Blackpool Better Start initiative, supporting innovation and transformation for the borough's youngest

residents. It is of note, that there is no explicit reference to children's rights and CRIA for commissioning of services, which is an omission at this stage and should be incorporated to strengthen development in this area going forward. Trauma-informed practice is being embedded across the borough, with over 400 staff trained in the approach, and has a clear linkage to a child rights-based approach.

The assessment unearthed significant challenges under healthy in linkage (or more specifically lack of) between 'business as usual' and a child rights-based approach. For example, services were often not able to reflect on the seven principles of a child rights-based approach in the context of work being carried out. It also highlighted areas of work within the action plan, and subsequent sustainability plan, that had not been progressed due to an absence of resourcing, such as the Young Inspectors programme.

HEALTHY

Indicators	<p>Increase in children and young people who know how to eat healthily (5% increase)</p> <p>Increase in children and young people accessing children's and youth sports and physical activities (10% increase)</p> <p>A range of partners in Redbridge led by Public Health are working together to tackle obesity systemically.</p>	<p>Increase in number of children and young people who know about what mental health and wellbeing support is available and how to access it</p> <p>% increase in number of children and young people who know about mental health and wellbeing support is available</p> <p>% in number of children accessing service across the partnership when they needed it</p>	<p>More families, children and young people are aware of the help and support available to them and how to access it</p> <p>% increase in awareness of children and young people of support available to them for additional needs</p> <p>Increased number of young people who are aware of school nurse drop ins</p>	<p>Creation of the Early Years Alliance</p> <p>Peer review report with recommendations from independent experts</p> <p>% increase in the number of practitioners trained on the trauma informed approach</p> <p>There is wide understanding and implementation of the Trauma informed practice across the Council, schools and partners.</p>
Outcomes	<p>Children and young people are able to access and influence information and activities that lead to good physical health</p>	<p>Children and young people are able to access and influence information and services to support good mental and emotional health</p>	<p>Children and young people with additional needs are aware of and able to access and influence the support that they need</p>	<p>Children and young people in Redbridge benefit from a joined up and holistic approach</p>
Strategies	<p>Development of a Get Active Strategy with children and young people</p> <p>Healthy lifestyle and healthy eating programme at Youth Centres and Duke of Edinburgh's Award</p> <p>Deliver Holiday Activities and Food programme (HAF)</p> <p>Develop strategy and embed actions from systems approach to tackling obesity work</p>	<p>Promotion of mental health services and capturing of good practice</p> <p>Develop work programme around mental health with various youth groups (including Youth Council, CFR Ambassadors, Children in Care Council and SEND Youth Forum)</p> <p>Project to test awareness and accessibility of provision with young people from diverse backgrounds</p>	<p>Communications campaign to improve accessibility and awareness of wider health and support services specifically for young people and those with disabilities (or poorer health outcomes)</p> <p>Whole family social prescribing model with specific support for young people</p>	<p>Peer review of Strategic Early Years Partnership with independent practitioners and set of recommendations to test with stakeholders including parents</p> <p>Trauma informed practice training and clinical supervision for frontline staff implemented</p>

HEALTHY

Strategies	Providing safe, open and green spaces for informal and formal play, that include organised activities and street closures		Young Inspector initiative around reviewing and assessing mental health and wellbeing provision Implement and mainstream and review a resilience approach for Redbridge	Barnardo's and Redbridge Carers Support Service will be delivering young carers awareness training sessions with RSCP Targeted communications campaign to improve accessibility and awareness of wider health and support services for marginalised young people with additional needs School nurse drop ins are reviewed on a regular basis, and with different cohorts of young people, to ensure that they continue to offer what young people want Review of school nurse program is included as part of CFR Ambassadors programme Deliver a Young Inspector type mechanism to review our services for children and young people Mystery Shopper Annual audit to "Young People Friendly" pharmacies to ensure sexual health services are accessible and young people friendly Increase young people's awareness on substance misuse and harm reduction through "Fusion" – Young People's Substance Misuse Service			Model of Early Years engagement shared with partners and other UNICEF boroughs Development of Early Years Strategy with focus on Building Back Better	
	CRBA	Dignity	Participation	Best Interest	Life, Survival, Development	Interdependence and Indivisibility	Non-Discrimination	Transparency and Accountability
CFCI Minimum Criteria	Equity and non-discrimination		Data			Participation		

SAFE AND SECURE

Progress

The assessment highlighted some impressive work undertaken within Safe and Secure, which included recognising a range of harms, engagement with partners and harnessing a welfare response rather than a punitive one (e.g. where appropriate engagement through Children's Services rather than police).

A workshop in April 2024 with police and young people demonstrates an ongoing partnership with local community provision and the police to work with children and young people. Similarly, training data from the RSCP shows an ongoing commitment to train professionals across various agencies in understanding serious youth violence, gangs and the criminal exploitation of children. Survey data from 2019 and 2025 about children's perception and experiences of safety, particularly in relation to knife crime demonstrated a positive change. For example, in 2019 when 100 young people were surveyed 33% of respondents reported feeling safe 'out and about', compared to 2025 survey data (with 53 respondents) where the lowest response to feelings of safety when outside in the dark was 49%.

The work undertaken regarding violence against women and girls through the 'This Has to Stop' (THTS) initiative demonstrates an impressive, multi-faceted approach in response to the findings throughout the Discovery phase of the programme; namely women and girls feeling unsafe because of sexual harassment. In 2022, Redbridge became the first London borough to utilise a Public Space Protection Order. An evaluation contained within evidence submitted illustrates the holistic intervention that has taken place across the community and speaks to a positive impact in practice. For example, "Redbridge saw a 9.4% drop in total crime in 2024, outperforming the broader London trend and THTS-specific offences (including harassment and sexist behaviour) decreased by 21% in Redbridge, from 734 to 576 incidents, between September 2023 and 2024."

There are now over 20 schools participating in the School Streets programme. Monitoring and evaluation of the scheme has demonstrated a reduction in vehicles in the roads outside of the school (decreasing likelihood of incidents with vehicles), families utilising alternative methods of transport on the school journey and improved air quality. One child reflected... "When I come to school there is less cars now and it feels nice and peaceful. I feel a wave of happiness coming into school because it's calm on the road and a nice start to the morning for all of us."

Moving forward, work to improve safety for children and young people across Redbridge would benefit from practitioners exploring the inherent tensions between different rights, such as the possible conflict between protection, privacy and participation, as well as a rights-based based review of language utilised in this area.

SAFE AND SECURE

Indicators	<p>Increase in number of young people who feel safe on their school routes including on public transport (over the lifetime of the programme delivery 20% more)</p> <p>Children breathe cleaner air outside of their school (reduced emissions near schools)</p>	<p>Improved perception of crime amongst young people in Redbridge</p> <p>Children and young people feel that their concerns about crime are being listened to</p> <p>Increased/sustained number of children and young people able to participate in dialogue with the police at ward level meetings</p>	<p>Increased number of young women and girls feel safe from sexual harassment (10% increase)</p> <p>Increase in number of young people that know how and where to report sexual harassment</p>
Outcomes	<p>Children and young people feel safe on their school routes including on public transport.</p>	<p>Children and young people feel safe from knife crime in their neighbourhoods.</p>	<p>Young women feel safe from sexual harassment at school from peers and on the street from members of the public.</p> <p>Young people know how to report any incidents of sexual harassment and feel confident to do so.</p>
Strategies	<p>Development and implementation of the safe routes and safe haven programmes with Youth Friendly training for staff at sites designated safe havens</p> <p>Twenty schools in Redbridge implement the school streets model</p> <p>Street safety targeted awareness campaigns and workshops focusing on areas of the borough where young people feel unsafe</p>	<p>Review actions from Crime Commission to understand where children and young people can co-design actions that come from the recommendations from the Commission</p> <p>Ward level panels are held regularly and co-chaired by young people and are able to set the agenda and identify local priorities to address</p> <p>Delivery of Box Up Crime service and activities</p> <p>Delivery of multi-agency training on Understanding Serious Youth Violence, Gangs and the Criminal Exploitation of Children via the Redbridge SCP Training Programme</p>	<p>Street audit with residents including a street audit specifically with young women</p> <p>Women and girls listening exercises with Council and Redbridge Council Women's Champion</p> <p>Training around sexual harassment being developed and commissioned for young people</p> <p>Create a report-it function on the Council website for anyone to report any incidents of street harassment that are not an emergency or can't be reported to the police, with targeted Comms for young people to ensure they are aware of this function</p>

SAFE AND SECURE

Strategies						<p>Women's safety campaigns and workshops</p> <p>Work with schools to educate young people about positive peer to peer interactions</p> <p>Youth Council and CFR Ambassadors to develop programme of work around sexual harassment</p> <p>Make Your Mark campaign by young people on sexual harassment</p> <p>Partnership with local businesses to provide them with information and tools to take measures that make women feel safer within Ilford</p>	
CRBA	Dignity	Participation	Best Interest	Life, Survival, Development	Interdependence and Indivisibility	Non-Discrimination	Transparency and Accountability
CFCI Minimum Criteria	Equity and non-discrimination		Data			Participation	

Progress

The assessment showcased lots of child-friendly placemaking, ranging from changes to local planning policy and examples of children engaging in specific projects, such as the development of the Seven Kings Community and Health Hub, Chapel Place, Ilford and Billet Road developments. Many planning and regeneration staff have received training in children's rights, with some having completed training in engaging with children and young people as equal partners, thereby strengthening the participative approach to local regeneration.

Impact studies demonstrate attempts to embed the seven principles of the CRBA into planning processes, so that stakeholders (external to the council), such as developers, are also held to account on their commitment to and implementation of child rights. The Planning Policy team have made a commitment to engage with children and young people during the next review of the local plan, and there were examples shared of housing policy decisions being informed by young people with experience of homelessness. The volume and variety of child rights-based work happening under Place has been very impressive, demonstrating a changing culture which is having impact on the broader community.

The assessment reflected thoughtful connection to the Safe and Secure badge, in terms of understanding children's experience of safety and attempting to mitigate any disproportionate impact for certain groups of children and young people. For example, attempting to cultivate respect rather than a 'police state'.

The Mega-Mix evaluation demonstrates a year-on-year increase in free and accessible activities for children and their families, alongside increasing uptake from children and young people.

There has been effort to include children and young people in the borough's response to the climate crisis, such as through the Redbridge Climate Forum, and reflections from practitioners about different models of participation, and the extent to which children and young people can be empowered to lead this work. This has extended to the wider pan-London youth climate forum.

PLACE

Indicators	<p>The sustainability of green community groups and the Redbridge Climate Forum is improved through the long-term involvement of young people</p> <p>Increased number of young people involved in climate related activities</p> <p>% increase in number of children and young people engaged with climate related projects and work.</p> <p>% increase of Redbridge Climate Forum members that are children or young people.</p>	<p>Increase in number of schemes that are co-designed with children and young people</p> <p>A Regeneration and Planning workforce that is skilled in taking a child rights-based approach to placemaking</p> <p>% increase in physical schemes that young people are co-designing across the Council and partners</p>	<p>Children and young people and their families are able to access activities that are attractive to them and are inclusive</p> <p>There is an increased number of free and/or inclusive activities for children and young people</p>
Outcomes	<p>Children and young are able to take an active role in tackling climate change</p>	<p>Children and young people are involved in place making so that they feel welcome and safe in all parts of Redbridge</p>	<p>There are a range of activities and things to do for children and young people, which are accessible, inclusive and affordable</p>
Strategies	<p>Children and young people are supported to co-design and deliver the actions in the Climate Crisis Action Plan</p> <p>Programme of actions and projects with youth groups that address climate concerns including those from seldom heard groups</p> <p>Actions from Neighbourhoods engagement with schools:</p> <ul style="list-style-type: none"> - Ongoing education programme with all Y4 pupils - Annual junior citizens week with all Y6 pupils - Schools tree planting programme (11 primary schools' borough wide) - Schools play streets - Education and Engagement programme with Redbridge Institute and Children Centres-parents and families. 	<p>Children and young people are included in the design of the Council regeneration schemes including:</p> <ul style="list-style-type: none"> - Fairlop Waters - The Western Gateway - Hainault Forest Country Park's 'Hainault Ancient Forest – a Landscape for the Future' project <p>Develop a set of child friendly design principles that address young people's concerns and apply them to new developments and regeneration schemes</p> <p>A series of Community Design Forums will be established to ensure a diverse range of voices, including young people, can help to shape the development of their local neighbourhood</p>	<p>Research by Young Advisors on what activities young people want to see and research from the Youth Council and CFR Ambassadors to incorporate in future service delivery model</p> <p>Develop and publish mapping of provision for children and young people jointly with partners. Consider how provision for children with SEND could be included in this</p> <p>Work with London Youth to undertake a pilot into cold spots in funding for Youth Provision</p>

PLACE

Strategies	Young people to be included in the long-term community response to climate change via Redbridge Climate Forum			<p>Developers work with practitioners and the Child Friendly programme team leads in Redbridge to design engagement and wider involvement in helping shape local place making. Pilot with Telford Homes scheme in Ilford before rolling out further with other schemes</p> <p>Children and young people (including Under 5's/Early Years) are at the heart of the design of our Community Hubs as they are introduced across the borough over the coming years</p> <p>Children and young people (including Under 5's/Early Years) will be integral in helping to shape and develop a new Local Plan – the single document that will determine the vision for the future of the borough – and involved as part of the regular review process of the Local Plan</p> <p>Early Years engagement in development of all new schemes at the design, development and review stages</p>			<p>Promote all Vision services and facilities for young people more widely, including by using the inclusive engagement approach for children and young people developed by the Programme Team</p> <p>Young Influencers are able to provide feedback on and influence long term the provision delivered by Vision for children and young people</p>		
CRBA	Dignity	Participation	Best Interest	Life, Survival, Development	Interdependence and Indivisibility	Non-Discrimination	Transparency and Accountability		
CFCI Minimum Criteria	Equity and non-discrimination			Data			Participation		

Part of UNICEF's Global



UNITED KINGDOM



[unicef.uk/cfc](https://www.unicef.uk/cfc)

T: 020 7017 1763

E: cfc@unicef.org.uk

United Kingdom Committee for UNICEF
(UNICEF UK), Registered Charity No. 1072612
(England & Wales), SC043677 (Scotland).