

Our Ref: 105181-024

30 June 2025

Havering London Borough
eljointwasteplan@haverling.gov.uk
 via email only

Dear Sir /Madam,

East London Joint Waste Plan Regulation 19 consultation May-June 2025 Representations on behalf of National Grid Electricity Transmission (NGET)

National Grid Electricity Transmission has appointed Fisher German LLP to review and respond to local planning authority Development Plan Document consultations on its behalf. We are instructed by our client to submit the following representation with regard to the current consultation on the above document.

About National Grid Electricity Transmission (NGET)

National Grid Electricity Transmission plc (NGET) owns and maintains the electricity transmission system in England and Wales. NGET manage not only today's highly complex network but also to enable the electricity system of tomorrow. Their work involves building and maintaining the electricity transmission network – safely, reliably and efficiently. NGET connect sources of electricity generation to the network and transport it onwards to the distribution system so it can reach homes and businesses.

National Grid Electricity Distribution (NGED) are the electricity distribution division of National Grid and are separate from National Grid Electricity Transmission's core regulated businesses. Please also consult with NGED separately from NGET.

National Grid no longer owns or operates the high-pressure gas transmission system across the UK. This is the responsibility of National Gas Transmission, which is a separate entity and must be consulted independently.

National Grid Ventures (NGV) develop, operate and invest in energy projects, technologies, and partnerships to help accelerate the development of a clean energy future for consumers across the UK, Europe and the United States. NGV is separate from National Grid's core regulated businesses. Please also consult with NGV separately from NGET.

National Energy System Operator (NESO) has taken over the electricity and gas network planning responsibility from National Grid Electricity System Operator Limited (NGESO) as of 1st October 2024. Please also consult with NESO separately from NGET.

Proposed development sites crossed or in close proximity to NGET assets

Following a review of the above Development Plan Document, we have identified that one or more proposed development sites are crossed or in close proximity to NGET assets. Details of the sites affecting NGET assets are provided below.

Development Plan Document Site	Asset Description
B&D 32 – London Sustainable Industries Park North	ZR ROUTE TWR (016 - 063): 400Kv Overhead Transmission Line route: BARKING - NORTHFLEET EAST - WEST THURROCK 1 and BARKING - NORTHFLEET EAST - WEST THURROCK 2

	ZBA ROUTE TWR (010 - 052): 400Kv Overhead Transmission Line route: DISC BARKING – TILBURY and DISC BARKING - LITTLEBROOK - WEST THURROCK
HV 03 and HV 34 – Grove Farm (RJ Skip Hire/ South East Metals Ltd)	ZB ROUTE (TWR 1 - 137B): 400Kv Overhead Transmission Line route: ELSTREE - WARLEY 1 and ELSTREE - WARLEY 2
HV 28 – Plot 22 Albright Industrial Estate	ZR ROUTE TWR (016 - 063): 400Kv Overhead Transmission Line route: BARKING - NORTHFLEET EAST - WEST THURROCK 1 and BARKING - NORTHFLEET EAST - WEST THURROCK 2
HV 09 & HV 20 – Unit 7 Albright Industrial Estate	ZBA ROUTE TWR (010 - 052): 400Kv Overhead Transmission Line route: DISC BARKING – TILBURY and DISC BARKING - LITTLEBROOK - WEST THURROCK ZR ROUTE TWR (016 - 063): 400Kv Overhead Transmission Line route: BARKING - NORTHFLEET EAST - WEST THURROCK 1 and BARKING - NORTHFLEET EAST - WEST THURROCK 2
N 05 – Oasis Park, Stephenson Street	ZR ROUTE TWR (063A - 93): 400Kv Overhead Transmission Line route: BARKING - WEST HAM 1 and BARKING - WEST HAM 2
N 18 – Beckton Sewage Treatment Works	ZR ROUTE TWR (063A - 93): 400Kv Overhead Transmission Line route: BARKING - WEST HAM 1 and BARKING - WEST HAM 2 ZBH ROUTE: 275Kv Overhead Transmission Line route: BARKING - REDBRIDGE 1 and BARKING - REDBRIDGE 2

A plan showing details of the site locations and details of NGET assets is attached to this letter. Please note that this plan is illustrative only. NGET also provides information in relation to its assets at the website below.

<https://www.nationalgrid.com/electricity-transmission/network-and-infrastructure/network-route-maps>

Policy JWP2 (Safeguarding and Provision of Waste Capacity)

NGET advocates the high standards of design and sustainable development forms promoted through national planning policy and understands that contemporary planning and urban design agenda require a creative approach to new development around high voltage overhead lines and other NGET assets.

It is acknowledged that the safeguarded sites as listed above are existing waste facilities with planning consents for their operations, and also that their safeguarding at this stage within the East London Joint Waste Plan does not amount to additional proposals for redevelopment of the sites. Notwithstanding this, the interaction of NGET assets with sites which may accommodate additional capacity in the future we feel is of relevance to the purposes of Policy JWP2.

In view of the above, whilst we do not object to the policy and the safeguarding of the sites listed above, we recommend that a reference to future expansion of waste capacity on safeguarded sites – and any development associated with this – needing to be cognisant of any interactions with NGET assets be included in the policy wording.

New Infrastructure

New NGET infrastructure investment within the London Borough of Barking and Dagenham is in the early stages of being planned for. Demand for electricity is expected to rise as the way NGET power our homes, businesses and transport changes. As the nation moves towards net zero, the fossil fuels that once powered the economy will be replaced with sources of low-carbon electricity, such as offshore wind farms.

The UK Government has committed to reach net zero emissions by 2050. This means achieving a balance between the greenhouse gases put into the atmosphere and those taken out. Decarbonising the energy system is vital to this aim.

NGET's infrastructure projects in England and Wales will support the country's energy transition and make sure the grid is ready to connect to more and more sources of low carbon electricity generated in Britain.

The way NGET generate electricity in the UK is changing rapidly, and NGET are transitioning to cheaper, cleaner and more secure forms of renewable energy such as new offshore windfarms. NGET need to make changes to the network of overhead lines, pylons, cables and other infrastructure that transports electricity around the country, so that everyone has access to clean electricity from these new renewable sources. These changes include a need to increase the capability of the electricity transmission system between the North and the Midlands, and between the Midlands and the South. It is also needed to facilitate the connection of proposed new offshore wind, and subsea connections between England and Scotland, and between the UK and other countries across the North Sea.

Accordingly, we request that the Council is cognisant of the above.

Further Advice

NGET is happy to provide advice and guidance to the Council concerning their networks. Please see attached information outlining further guidance on development close to National Grid assets. If we can be of any assistance to you in providing informal comments in confidence during your policy development, please do not hesitate to contact us.

To help ensure the continued safe operation of existing sites and equipment and to facilitate future infrastructure investment, NGET wishes to be involved in the preparation, alteration and review of plans and strategies which may affect their assets. Please remember to consult NGET on any Development Plan Document (DPD) or site-specific proposals that could affect our assets.

We would be grateful if you could add our details shown below to your consultation database, if not already included:

Angela Brooks MRTPI, Partner

Tiffany Bates, Development Liaison Officer

If you require any further information in respect of this letter, then please contact us.

Yours faithfully,

**Angela Brooks MRTPI
Partner**

For and on behalf of Fisher German LLP

Further Guidance

NGET is able to provide advice and guidance to the Council concerning their networks and encourages high quality and well-planned development in the vicinity of its assets.

Developers of sites crossed or in close proximity to NGET assets should be aware that it is NGET policy to retain existing overhead lines in-situ, though it recognises that there may be exceptional circumstances that would justify the request where, for example, the proposal is of regional or national importance.

NGET's 'Design guidelines for development near pylons and high voltage overhead power lines' promote the successful development of sites crossed by existing overhead lines and the creation of well-designed places. The guidelines demonstrate that a creative design approach can minimise the impact of overhead lines whilst promoting a quality environment. The guidelines can be downloaded here: <https://www.nationalgrid.com/document/345326/download>

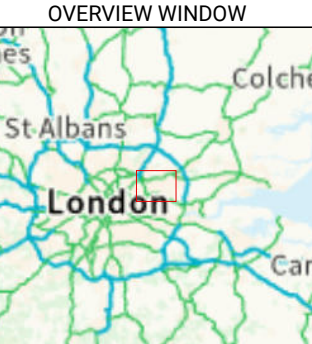
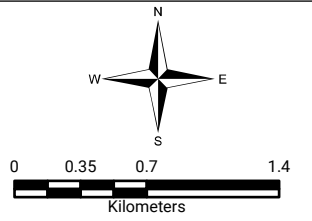
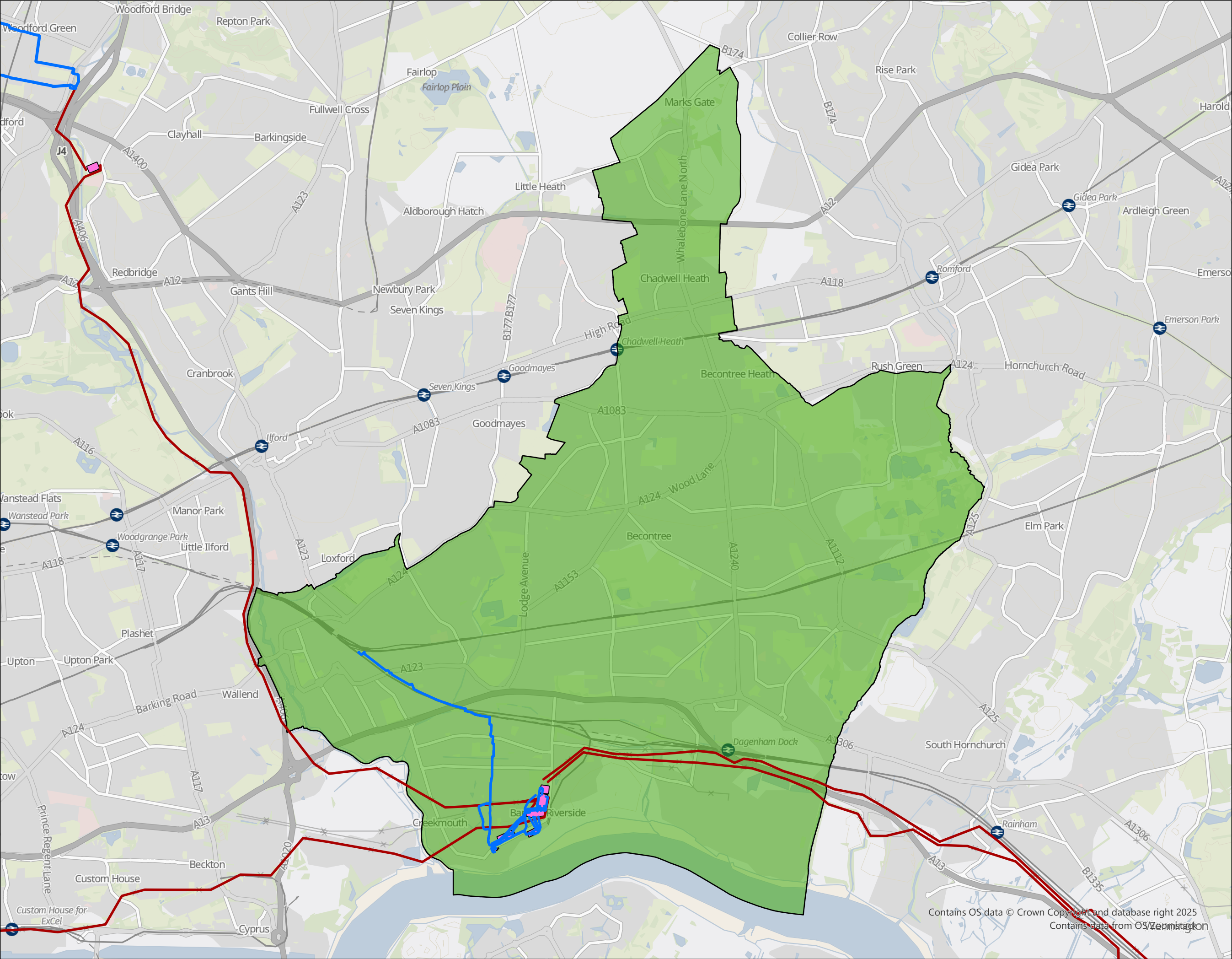
The statutory safety clearances between overhead lines, the ground, and built structures must not be infringed. Where changes are proposed to ground levels beneath an existing line then it is important that changes in ground levels do not result in safety clearances being infringed. National Grid can, on request, provide to developers detailed line profile drawings that detail the height of conductors, above ordnance datum, at a specific site.

NGET's statutory safety clearances are detailed in their Technical Guidance Note 'Third-party guidance for working near National Grid Electricity Transmission equipment', which can be downloaded here: <https://www.nationalgrid.com/document/349291/download>

How to contact NGET

If you require any further information in relation to the above and/or if you would like to check if NGET's transmission networks may be affected by a proposed development, please visit the website: <https://lsbud.co.uk/>

For local planning policy queries, please contact:



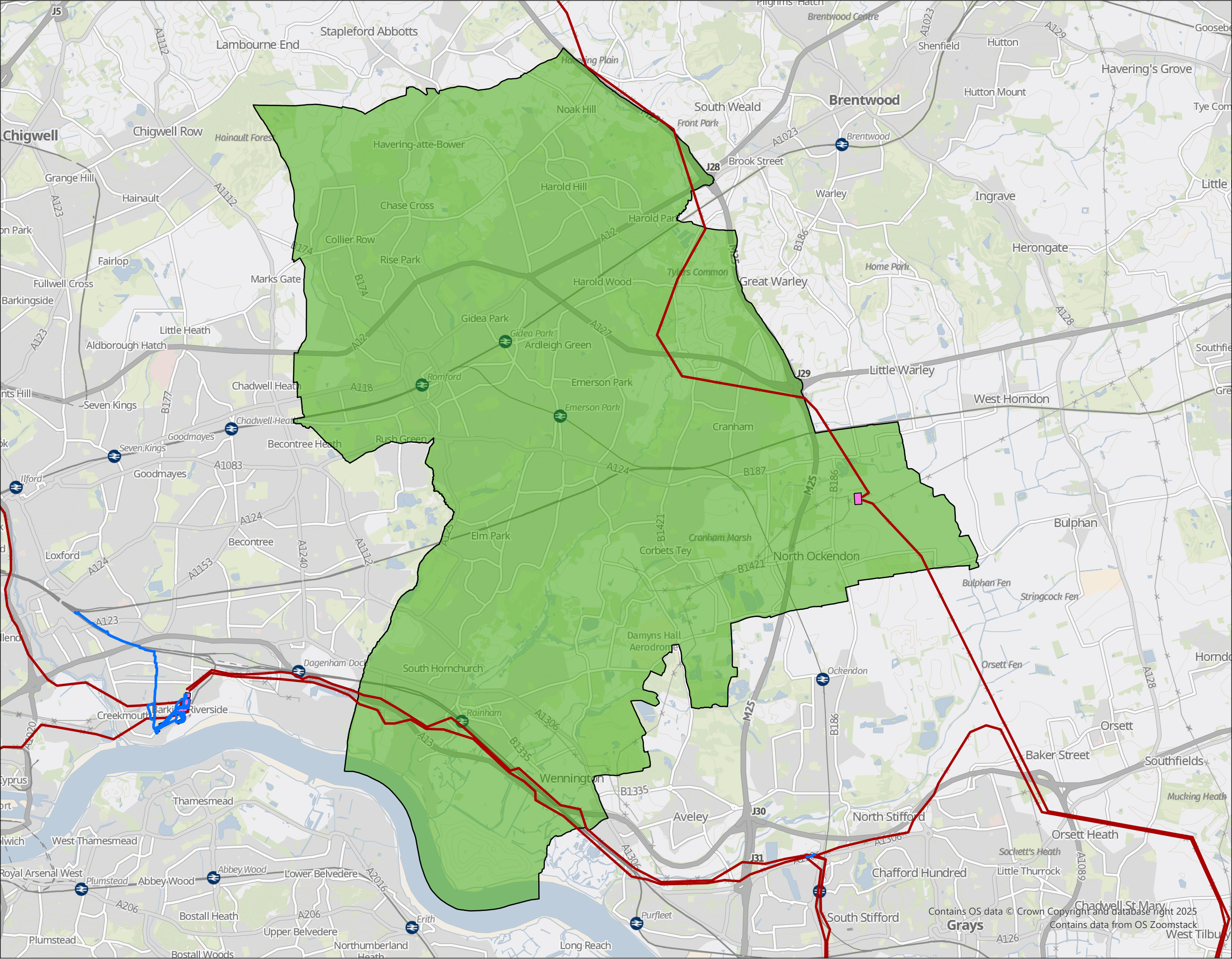
- LEGEND:
- Cable
 - OHL
 - Substation
 - LPA Area

REVISION: A
CLIENT: **nationalgrid**
SCHEME:
PLANNING INTERACTION
TITLE:
LPA ASSET INTERACTION
FP: 105181-024
SCALE: 1:40,000 @ A3
DATE: 20/05/2025

© Crown copyright and database rights 2025
Ordnance Survey License Number AC0000849937.

Licensed Mapping
THIS DRAWING IS PROTECTED BY COPYRIGHT. IT MAY NOT BE REPRODUCED IN ANY FORM OR BY ANY MEANS FOR ANY PURPOSE WITHOUT WRITTEN PERMISSION OF FISHER GERMAN LLP CHARTERED SURVEYORS.
Information produced by HM Land Registry. Crown copyright and database rights 2025

**fisher
german**
Contains OS data © Crown Copyright and database right 2025
Contains data from OS/Zeon station
DRAWING REF:
NG-2025-03-MT-OP-LPA- Barking and Dagenham



OVERVIEW WINDOW

LEGEND:

Cable

OHL

Substation

LPA Area

REVISION: A
CLIENT: **nationalgrid**

SCHEME:
PLANNING INTERACTION

TITLE:
LPA ASSET INTERACTION

FP: 105181-024

SCALE: 1:66,000 @ A3
DATE: 20/05/2025

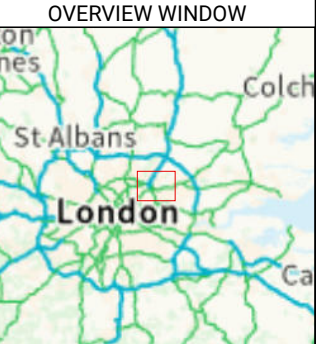
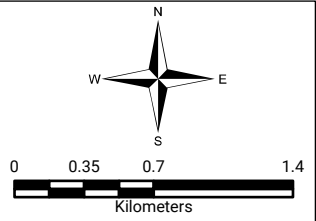
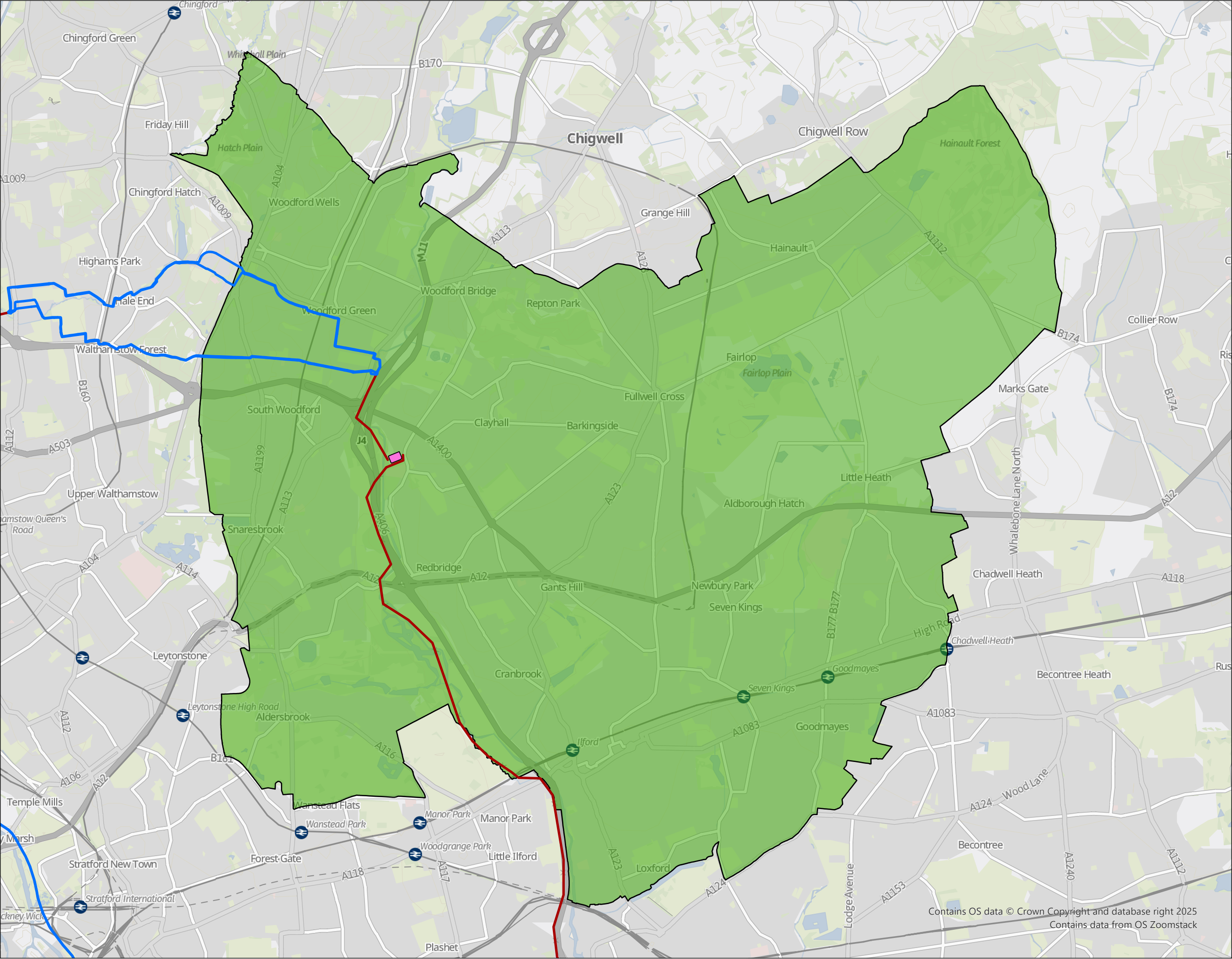
Licensed Mapping

THIS DRAWING IS PROTECTED BY COPYRIGHT. IT MAY NOT BE REPRODUCED IN ANY FORM OR BY ANY MEANS FOR ANY PURPOSE WITHOUT WRITTEN PERMISSION OF FISHER GERMAN LLP CHARTERED SURVEYORS.
Information produced by HM Land Registry. Crown copyright and database rights 2025

**fisher
german**

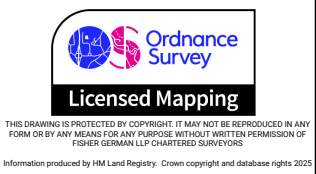
DRAWING REF:
NG-2025-03-MT-OP-LPA- Havering

Contains OS data © Crown Copyright and database right 2025
Contains data from OS Zoomstack



- LEGEND:
- Cable
 - OHL
 - Substation
 - LPA Area

REVISION: A
CLIENT: **nationalgrid**
SCHEME:
PLANNING INTERACTION
TITLE:
LPA ASSET INTERACTION
FP: 105181-024
SCALE: 1:38,000 @ A3
DATE: 20/05/2025
© Crown copyright and database rights 2025
Ordnance Survey License Number AC0000849937.



**fisher
german**
DRAWING REF:
NG-2025-03-MT-OP-LPA- Redbridge

Contains OS data © Crown Copyright and database right 2025
Contains data from OS Zoomstack