

REDBRIDGE LIFE

CRACKING
DOWN ON
GRIME CRIME

page 4



DECISION
MADE ON
BROADMEAD
ROAD BRIDGE

page 8



LOCAL MUM'S
INSPIRING
CANCER AND
RUNNING STORY

page 17



Picture perfect: Photography Award winners revealed, pages 6 and 7



Early morning sunrise in Claybury Park. Photo submitted by Alan Simpson, Redbridge Nature category.



Educators Training

Our passion is your success!
Enrol on one of our courses now!

WE ARE
OUTSTANDING
NCFE CACHE
July 2025

Why Choose Us

Over 30 years of experience in Early Years and Teaching
Nationally recognised qualifications
Courses from Level 1 with progression routes to Level 5

Contact us

Educators Training
The Trinity Centre, Baxter Rd, Ilford IG1 2HN
Info@educatorstraining.co.uk
020 8478 2162
www.educatorstraining.co.uk

Courses

Teaching Assistant
Early Years
SEN courses
Home-based Childcare

First Aid
Hair and Beauty
Dressmaking

Free Courses

English & Maths -
Functional Skills

www.educatorstraining.co.uk

SCAN ME



HAVE YOUR SAY AT COUNCIL MEETINGS

All meetings will be held in person at the Town Hall, High Road, Ilford, IG1 1DD.
Visit www.redbridge.gov.uk for information, agendas, and links to view online.

Council

Thursday 18 September **7pm**
Thursday 20 November **7pm**

Cabinet

Thursday 11 September **7pm**
Thursday 16 October **7pm**
Thursday 13 November **7pm**

Planning Committee

Wednesday 15 October **7pm**
Tuesday 11 November **7pm**

Licensing Committee

Wednesday 22 October **7pm**

Education Scrutiny Sub Committee

Wednesday 12 November **7pm**

Health Scrutiny Sub Committee

Thursday 25 September **7pm**
Wednesday 26 November **7pm**

Health and Wellbeing Board

Monday 15 September **2.15pm**
Monday 17 November **2.15pm**

Overview and Scrutiny Committee

Tuesday 14 October **7pm**
Monday 10 November **7pm**

Governance and Assurance

Tuesday 4 November **7pm**

General Purposes Committee

Thursday 16 October **8pm**

Produced by Redbridge Council

The editor can be contacted via email, at redbridge.life@redbridge.gov.uk

London Borough of Redbridge, PO BOX No.2, Town Hall, 128-142 High Road, Ilford, IG1 1DD.

Redbridge Life is published quarterly. Redbridge Council does not accept responsibility for any goods or services offered by advertisers. Publication of an advert does not imply endorsement of any goods or services offered.

Distribution problem?

Email redbridge.life@redbridge.gov.uk

To see advertisement rates, visit www.redbridge.gov.uk/redbridgelife

Next issue out in December

For information on how to ask a question at meetings, please email councilquestions@redbridge.gov.uk and for additional public meeting dates, visit www.redbridge.gov.uk/about-the-council/public-meetings

Telephone: 020 8708 2465/2352 or
Email: democratic.services@redbridge.gov.uk or Scrutiny@redbridge.gov.uk



LEADER'S MESSAGE

Welcome to the Autumn edition of Redbridge Life

Dear neighbours,

As the leaves turn and summer becomes autumn, all of us across Redbridge will be starting to layer up and prepare for the colder days and darker nights. In this edition of Redbridge Life, we look at the everyday work going on across the borough by our council and by residents to improve local services, support our communities and keep making Redbridge even better.

We are continuing to invest in what matters. We're tackling housing conditions and improving community safety, and our latest road resurfacing and flood protection works are well underway. We are continuing to fight for fairer government funding, we are co-operating proactively with the relevant consultations and proposals published by Government, and we're making sure local people have a real say in what services should look like in future by launching this year's budget consultation.

It's been a year of achievements. We have maintained nine Green Flag awards in parks across our borough, we've completed hundreds of new council homes for local people. We're planting thousands of trees, we've opened our state-of-the-art police hub in Woodford and will soon open Serenity Ilford – a brand-new women's only gym set within the newly refurbished Mildmay House.

At the same time, I know residents remain concerned about issues like crime, anti-social behaviour, or the future of Broadmead Road Bridge. We don't shy away from these challenges. We work on them, and we are working closer than ever with the police. We now have a clear plan for replacing the bridge and we have been in touch with those most affected. We are transparent where it matters most.

This issue also features stories from local people who bring our borough to life, and the fantastic winners of the Redbridge Photography Awards. That is what I'm most proud of. Redbridge is more than a borough or a place – it is its people.

As the weather turns and the nights draw in, there's plenty to keep us connected – from community events and murals to walking trails, and there's also support in this edition to help you stay well this winter.

Thank you for being part of it.

Councillor Kam Rai
Leader of Redbridge Council



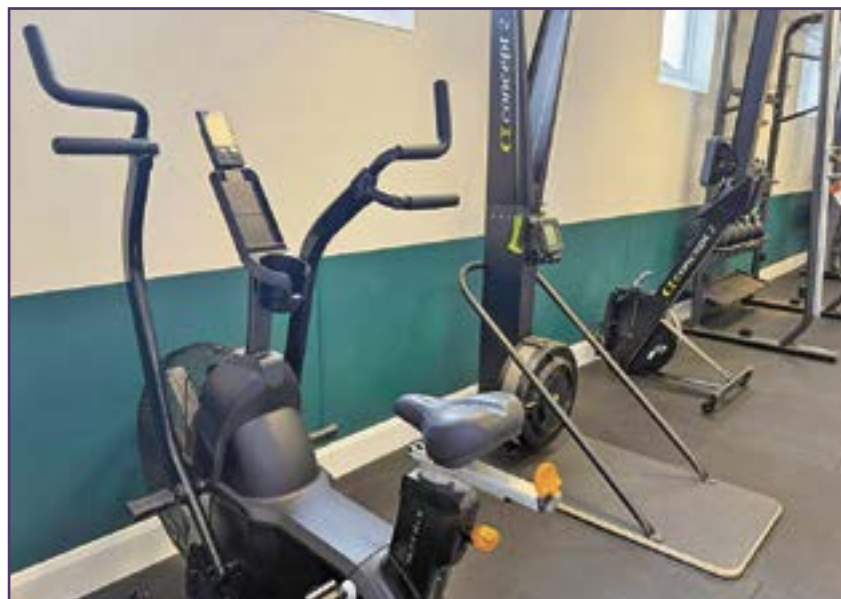
Brand new women's only gym opening in Ilford!

Get ready for a brand-new fitness haven for women, designed to inspire confidence, wellbeing and community

Managed by Vision RCL, this space is being transformed inside Mildmay House on Mildmay Road, and it's all about YOU.

Here's what to look forward to:

- **Top-tier equipment** – From treadmills to weights, everything you need to crush your goals
- **Expert female trainers** – Friendly, knowledgeable, and ready to tailor your fitness journey
- **Feel-good classes** – Yoga, Pilates, HIIT, and holistic sessions to boost body and mind
- **Beauty and bliss** – Facials, massages, manicures and pedicures... because self-care is part of the workout



Cllr Vanisha Solanki,
Deputy Leader
of Redbridge
Council, said,



"We're delighted to soon be opening a new facility for women in the heart of Ilford, where they can escape the pressures of modern life by taking part in a range of fitness and wellbeing classes. Serenity Ilford is a safe, supportive, and empowering space for women to exercise, relax, and thrive."

Membership starts at just £45/month, with concession rates available

Find out more at <https://visionrcl.org.uk/centre/serenity-ilford-women-only/>

Cracking down on Grime Crime offenders

Keeping the borough free from the scourge of fly-tipping and selfish neighbours



This summer, our hardworking Neighbourhood Enforcement Officers have been showing zero tolerance to those who disrespect our Borough.

They have been busy behind the scenes cracking down on selfish individuals who think it's acceptable to fly-tip rubbish on our streets, or nuisance neighbours who have turned local roads into eyesores by dumping piles of junk in their front gardens.

Here's a snapshot of recent enforcement activity:

Bairny Wood Approach, Woodford Green

We issued a formal Community Protection Notice (CPN) to the landowner, requiring them to clear up a large amount of rubbish.



BEFORE



AFTER

Ilford

Whilst on patrol, our Enforcement Team spotted a large pile of waste stacked high in a front garden in Ilford. A Community Protection Warning was issued to the householder, and following enforcement action, the garden has now been fully cleared.



BEFORE



AFTER

**Councillor Kam Rai,
Leader of the Council, said,**



"Keeping our streets clean is a team effort. Together, we're protecting the places where we live, work and raise our families.

"There is no need to fly-tip - it's completely unacceptable. We collect bulky and green garden waste for free, so there is zero excuse for dumping rubbish on our streets. We also have a recycling centre in Redbridge where you can dispose of items free of charge. Additionally, we continue to offer weekly bin and recycling collections.

"If you have any information on fly-tipping in your neighbourhood, please tell us. We'll find and fine the offenders. Please scan the QR code below."

Watan Restaurant, Ilford Lane

An Ilford restaurant owner received a hefty fine for fly-tipping. We successfully prosecuted Watan, based on Ilford Lane, and its owner, Bismillah Ullah. Barkingside Magistrates' Court ordered him to pay court and council costs totalling £7,150.



Rubbish piled up alongside Watan restaurant

FINED

So far in 2025, we've issued 227 Fixed Penalty Notices for fly-tipping offences - with fines of £1,000

ZERO TOLERANCE ZERO TOLERANCE ZERO TOLERANCE



Reporting fly-tips

Reporting fly-tips is easy. You can do it online through the Report It page <https://www.redbridge.gov.uk/report-it> or via the Love Clean Streets App.

Our Crime Not to Care campaign highlights how we all play a part in keeping our borough clean and tidy.



Cllr Khayer Chowdhury, Cabinet Member for Enforcement and Community Safety

Crossway, Woodford Green

A Community Protection Warning (CPW) was issued to the landowner, requesting the removal of large, bulky items, loose litter and other waste, and for the area to be kept clean.



BEFORE



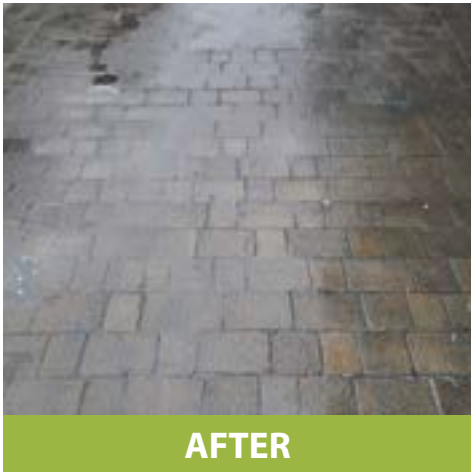
AFTER

York Mews, Ilford

Reports of graffiti were submitted by local residents via the Love Clean Streets app. Our Street Cleansing team promptly attended the location and successfully removed the graffiti from the pavement.



BEFORE



AFTER

Bengal Road, Ilford

This fly-tip on private land in Ilford was dealt with after our officers were alerted and contacted the landowner to ensure they cleared the eyesore. The owner is now taking additional action to secure their land including installing CCTV to deter fly-tips on the site.



BEFORE



AFTER

Protecting communities in times of crisis

Find out about the Civil Protection Service

Many of us have switched on the news and seen major incidents unfolding – whether it’s flooding, large fires or even acts of terrorism, affecting London and other parts of the UK.

When a crisis strikes, the Council’s Civil Protection Service is one of the first to respond in helping to support our emergency service partners.

The Civil Protection Service conducts regular training exercises with our local blue light partners in the emergency services. As part of the training exercises, they will respond to a potential emergency as though it were happening in real life.

The service also has extensive first-hand experience supporting communities with a wide range of incidents and emergencies, such as the gas explosion in Ley Street last December.



Cllr Khayer Chowdhury, Cabinet Member for Community Safety and Enforcement, said,

“When emergencies happen, whether it’s a major fire, flooding, or a serious incident like the Ley Street gas explosion, our Civil Protection Service team is there - working behind the scenes and on the ground to protect residents and restore calm.

“That’s why we’ve continued to invest in the service to strengthen our response capabilities, including enhanced training, upgraded equipment, and closer coordination with emergency partners. These improvements mean we can act faster, support more people, and ensure our borough is resilient in the face of crisis.”

Speak to your local police officers by signing up to Met Engage

Find out who your local police officers are by visiting <https://www.metengage.co.uk>



Redbridge Photography Awards 2025 winners revealed!

This year's competition was fierce, with 639 stunning entries submitted. Five talented photographers took home the top prizes...

Woodford High Street bathed in golden light, Hainault Forest alive with autumn colour, curious squirrels, graceful ducks — the photos submitted to this year's Redbridge Photography Awards were nothing short of breathtaking!

The pictures captured the heart and soul of our borough, showcasing its natural beauty, vibrant streets, and everyday magic through the eyes of our talented local photographers. With hundreds of stunning submissions, the standard was sky-high, and the judging was tougher than ever.

Photographers entered their best shots across four categories: Redbridge Places, Redbridge Nature, Redbridge Heroes, Redbridge Pets and the Redbridge Young People's Award. Each photo showed a unique side of our community's charm and character.

The winners were announced at a special awards ceremony, where we celebrated the talent and creativity of our local photographers. Congratulations to all the winners for their outstanding work!



The winning photos will be displayed at Redbridge Central Library. Head over to our competition webpage (link below) for more details. If you can't make it in person, don't worry - the photos will also be shared on our social media channels, so make sure you're following us!

You can also see the winning entries by visiting:
<https://engage.redbridge.gov.uk/rpa-2025>
or simply scan the QR code



X (Twitter): @RedbridgeLive



TikTok: @redbridgecouncil



@redbridgecouncil



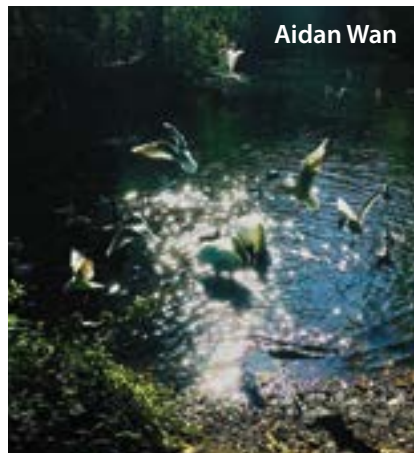
@RedbridgeCouncilOfficial

Runners up

Malcolm Baber



Aidan Wan



Iqra Abdul-Kahar



The winner of the Redbridge Pets category is...



... **Ivaylo Mihaylov**, who took a picture of his dog in Hainault Forest jumping over a tree.

Thank you to everyone who entered and to our generous sponsors for making the competition such a success.



The winner of the
Redbridge Young People's Award
category is...



... **Kashaf Aamir**, who took a picture of Valentines Park, Ilford.

The winner of the
Redbridge Places
category is...



... **Emma Byrne**, who took a picture of the sun setting on Ilford Station.

The winner of the
Redbridge Heroes
category is...



... **Paul Fox**, who took a picture of community heroes, young and old, playing chess.

The winner of the
Redbridge Nature
category is...



... **Alan Simpson**, who took a picture of an early morning sunrise in Claybury Park.

Thank you to everyone who entered and to our generous sponsors for making the competition such a success.



Broadmead Road Bridge – future clearer as plan approved and Council fights for funding

Council's cabinet approve option to demolish and rebuild bridge

Redbridge Council has agreed on plans to replace Broadmead Road Bridge, the vital link between Woodford and the rest of the borough, once funding has been secured.

The decision follows a detailed options appraisal presented to Cabinet, which identified full replacement as the most effective long-term solution. The new bridge will be a single-span structure capable of supporting cars, lorries and buses, re-opening the road to all traffic. Councillors also agreed to work with Transport for London and Central Government to seek the use of the £1 billion infrastructure fund or to continue with discussions to ensure that alternative funding can be provided to get the bridge rebuilt.

The existing bridge, which has reached the end of its design life, has been subject to ongoing monitoring and maintenance but now needs replacing. This will also improve access for pedestrians and cyclists.

This bridge on the M6 is similar in construction to the approved option for Broadmead Bridge



Councillor Kam Rai, Leader of Redbridge Council, said,

"This decision made by the cabinet is an enormous milestone for the council. We now have a plan and business case ready, in the form of the options report compiled by our specialist contractors.

"We are presenting this to government and our partners to win their support. We have completed all the required work to survey and assess the condition of the existing bridge, confirming that we made the right choice to close the bridge when we did.

"We are now working hard to secure the right level of funding from partners in regional and national government to knock down the existing bridge, and press on with putting up the new one.

"I and your ward councillors were also regular users of the bridge, and understand the disruption it causes to your lives. Re-opening the bridge to cars and buses matters to us, and we want to see a long-term solution delivered quickly. We are committed to doing just that, and to remaining transparent with neighbours as we go forward."



We remain committed to being transparent throughout this process, and full reports and assessments are available on Let's Talk Redbridge
<https://engage.redbridge.gov.uk/broadmead-road-bridge>



Enjoy smoother journeys on our roads

Major resurfacing underway to improve roads and footways this year

We're rolling out a £4.2 million programme of road and footway resurfacing works across the borough this year, helping to create safer roads and smoother journeys for residents, businesses and visitors.

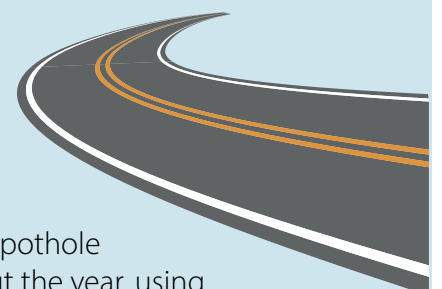
This work is a vital part of our annual maintenance programme. Each year, we assess the condition of our roads and footways to determine where investment is most needed. While our budget is limited and we would like to do more, we prioritise resurfacing based on

detailed inspections, safety records and feedback from local people.

This financial year, 70,000 square metres of road surface will be improved, which is roughly the distance from Redbridge Rounabout to the M25. Nearly 9,000 square metres of footway resurfacing is also planned. The programme began earlier this year with works on Atherton Road in Fullwell and Beattyville Gardens in Barkingside, with more locations scheduled throughout the year.

We also carry out pothole repairs throughout the year, using intelligence from inspections and reports. Your help is essential. If you spot a pothole, please report it so we can investigate and take action.

These improvements are part of a wider ten-year forward plan that pledges continued investment in our road network. Last year, we resurfaced over 51,700 square metres of road, which is equivalent to 198 tennis courts, and we are committed to building on that progress.



OCTOBER | VARIOUS LOCATIONS

Black History Month

Redbridge Libraries are hosting a programme of events and activities for **Black History Month** during the month of **October**.



THURSDAY 30 OCTOBER (WANSTEAD)
FRIDAY 31 OCTOBER (ILFORD)

Festival of the Dead

Join Redbridge Culture & Libraries for a **vibrant celebration** of life & death in this **family friendly** arts festival inspired by festivals and traditions from around the world.



EVENTS START FROM 4PM*

Christmas Light Switch On

Wanstead

Friday 21 November

Ilford

Saturday 22 November

Hainault

Tuesday 25 November

Valentines Mansion

Thursday 27 November

Seven Kings

Friday 28 November

Fullwell Cross

Saturday 29 November



*Times may vary for each location.
Check the Vision website for more details.

Redbridge Outdoor Arts

Presents **PATOIS** by
Jeanefer Jean Charles &
Associates

Saturday 4 October

Ken Aston Square, Barkingside

Sunday 5 October

Ilford Town Centre





Let us know about YOUR LOCAL HERO!

Do you know a community hero? It can be a group or an individual. Let us know and we can feature them on this page. Email community@redbridge.gov.uk with the catchline **Community Hero**.

Wren Wildlife & Conservation Group volunteer: Tim Harris

For more than 50 years the Wren Wildlife & Conservation Group has been working tirelessly in our borough to help protect and support local wildlife and green spaces.

You may not have heard of them, but their contribution to conservation work, and bringing local people together to support and restore nature in and around Wanstead has been immense.

From its humble beginnings in the seventies with just a few people, the group has gone on to become a much-loved community asset made up of hundreds of local volunteers and group members - all passionately working together to preserve their local environment and encourage more biodiversity around Wanstead Flats and Wanstead Park.

Volunteers from the Wren Wildlife and Conservation Group can often be spotted undertaking a number of tasks from cutting back brambles and trimming grassland, to clearing pathways, and planting wild flowers to enhance the local environment and help create habitats for wildlife to thrive.



Through workshops, talks, volunteering opportunities and conservation activities, Wren has been inspiring and helping empower local people to take action and become stewards of their local environment.

Tim Harris, from Wanstead, has been a volunteer with the group for over 15 years, and helped develop a regular programme of Wren walk-and-talk activities, which has gone on to become a community hit.

The 68-year-old lifelong nature enthusiast said,

"I absolutely love wildlife and being around nature. It's something that gives me great pleasure. There are so many wonderful open spaces locally, and lots of people interested in nature so I helped start a regular programme of walk-and-talk sessions when I became a volunteer. As part of these sessions, we count wildlife to contribute to national surveys, we have experts giving talks and we also teach local people how to identify different species of wildlife. It's a fun way to learn about nature, as well as being great for mental well-being as it gets you outdoors you can make new friends."

Tim continued:

"It's great to see the community coming together to support nature through Wren. One of our major achievements is the work we have been doing to protect an endangered Skylark bird population on Wanstead Flats. Skylarks are declining nationally due to habitat loss. With the support of the City of London Corporation, we've managed to secure fencing around two areas with nesting Skylarks to protect them, and this year we hope to see them raise some more young, helping add to the local Skylark population."



Butterflies are thriving
in Redbridge
Photo by Tim Harris



Skylark
on stone
Photo by
Neil
Bowman

To find out more about Wren Wildlife & Conservation group including their programme of activities go to <https://wrengroup.org.uk>

CALLING ALL LANDLORDS!

Selective Licensing Schemes

If you're a landlord or agent and you operate any rented property, you may need to apply for a property licence.

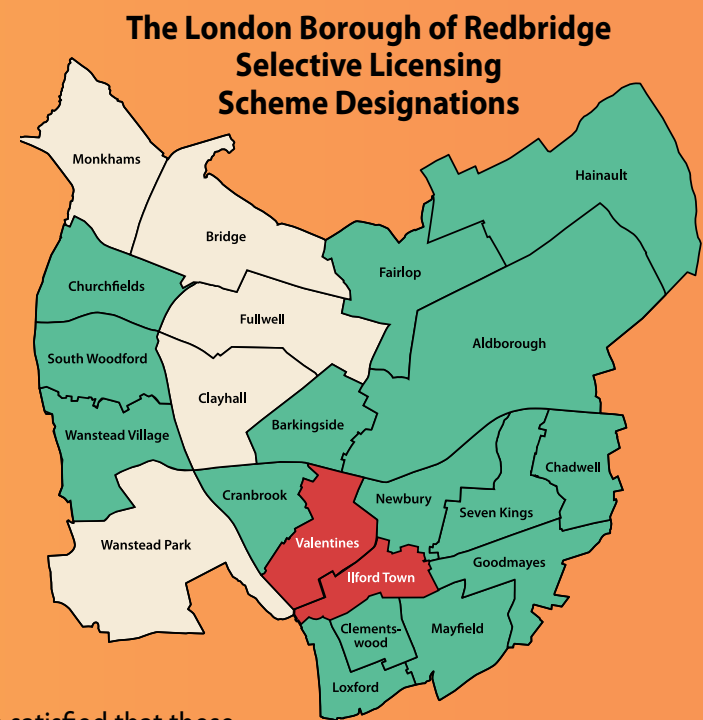
Redbridge Council has two selective licensing schemes in place. Selective Scheme 3 (2 wards) has been in operation since **1 November 2023** and applies to rented properties within Ilford Town and Valentines wards.

Selective Scheme 4 (15 wards) came into force on **Monday 8 April 2024**. The wards affected are: Aldborough, Barkingside, Chadwell, Churchfields, Clementswood, Cranbrook, Fairlop, Goodmayes, Hainault, Loxford, Mayfield, Newbury, Seven Kings, South Woodford and Wanstead Village. These schemes require landlords or agents of most private rented properties in these areas to apply for a selective property licence. To apply, visit <https://propertylicensing.redbridge.gov.uk/>

If you already have a selective licence for a property in these wards and it is still in date, the licence will remain in force until the expiry date shown on the licence. These new schemes were introduced after a full public consultation and confirmation by the government, who were satisfied that these schemes will contribute to an improvement in general housing conditions in the areas, and that private rented housing in the designated area is experiencing high levels of deprivation, high levels of migration, and significant and persistent antisocial behaviour.

Failing to get a property licence can result in receiving a civil penalty of up to **£30,000** or prosecution in Court, where the fine is **unlimited**. Additionally, not having a property licence may prevent you from evicting tenants using the 'section 21' process. Tenants may also be able to claim back up to 12 months' rent from you, via a **Rent Repayment Order** (RRO). The Council will normally publish any prosecutions, enforcement, or legal action in the press and update the Greater London Authority's (GLA) public Rogue Landlord and Agent Checker and government intelligence databases.

To find out more information and check whether your rental property needs a Selective or any other type of Licence, visit www.redbridge.gov.uk/privaterentals



Scheme 3 Ilford Town and Valentines is already in force

Scheme 4 - in force from 8 April 2024

Scan the QR code to see the Public Notice for Scheme 4



Additional HMO Licensing Scheme

Redbridge Council approved a new five-year Additional Licensing scheme for small Houses in Multiple Occupation (HMO) across the whole borough. Additional HMO property licensing is now a legal requirement, as of **Monday 18 September 2023 until 17 September 2028**.

This means that any property which is rented to three or four occupiers forming two or more households that share (or lack) a toilet, personal washing facilities or cooking facilities needs to have an HMO Licence.



This includes certain converted blocks of flats (known as Section 257 HMOs), but only where all accommodation units are privately rented, and the building and accommodation units are in the same ownership or control. This includes buildings within mixed use developments or above non-residential premises.

The introduction of this new HMO Licensing Scheme comes after a full public consultation. Overall, it was found that there are significant issues such as poor housing conditions, ineffective management, crime, and antisocial behaviour persisting within HMOs in the borough.

For more information on whether your rental property needs an Additional (HMO) Licence, visit www.redbridge.gov.uk/housing/private-rentals



Additional Licensing Designation Boundary

Scan the QR code to see the Public Notice



Create a wild space and help restore nature in Redbridge

CLEANER
Redbridge

We have already created 400,000 square metres of wild spaces in our borough. Let's work together to create more!

We love green spaces, colourful flowers and thriving wildlife habitats in Redbridge. It creates a beautiful biodiverse borough, but we also know more needs to be done to protect our local environment and support nature.

The State of Nature Report 2023 revealed that UK wildlife has declined by 19% since 1970, with 1 in 6 species at risk of extinction.

One of the ways we're helping restore nature in Redbridge is by creating wild spaces. Wild spaces create thriving habitats for local wildlife, including

pollinators such as bees and butterflies, which are vital to our ecosystems.

They can be areas of any size and can be created in gardens, balconies, patios, community spaces, parks, and even school grounds – and it can be as simple as a few nectar-rich flowers in a pot or as extensive as a wildflower meadow, or a corner of an allotment.

So far, 400,000 square metres of wild spaces have been created in Redbridge - exceeding our original target of 160,000 square metres

It has been achieved through a range of council backed eco-schemes. These include the new Aldborough Hall Nature Reserve, featuring wildflower nature zones, and Redbridge 'Grow Zones' where the grass is cut less frequently in spaces identified as Grow Zones by the council to encourage the growth of wildflowers and attract wildlife.



Local people have also been supporting the creation of wild spaces through council led projects including community gardens and mini orchards. Local gardening group Woodford Greeners were behind one of the most recent mini orchards in the borough.



One of several Grow Zones across the borough



Volunteers at Finchingfield Orchard, from left to right: Marc Zahra - M Group Highways, Vanessa Poynter and Lydia Fraser-Ward - Woodford Greeners, Emily Clark - young volunteer, and Victoria Kelly - M Group Highways

Lydia Fraser-Ward, who was part of the group and led the project, said,

"We noticed a local patch of land which was quite a sorry sight, so we contacted the council about adopting the space to restore it and bring it back into community use. Thanks to the hard work of nearly 80 volunteers, we turned that small area of land into a mini orchard with a wildflower meadow beneath it. Its impact locally has been fantastic. It's made the area



Woodford Greeners volunteers helping create a mini orchard

more pleasant, and the trees and plants have become a haven for lots of lovely wildlife including birds and insects. It's wonderful to see so many people come together to support our local environment and improve the area for everyone."



Communities working together to create a mini orchard

Over 850 tree pits have also been adopted and planted with wildflowers by local people. This is through our Adopt a Tree Pit and Pollinator Pathway schemes, which are helping to create more local wild spaces.



Tree pits brought to bloom by local people

We have also removed just over 2.5 miles of roads and pavements from our herbicide spraying schedule to encourage natural wildlife habitats.



Take the Restore Nature Pledge Get involved in Redbridge's new Restore Nature Pledge. Take the pledge and commit to one or more of the ten simple pledge actions designed to support nature.

For more information and to get involved go to <https://www.redbridge.gov.uk/our-streets/restore-nature-pledge/>



Get ready for new food waste collection service launching soon

The roll out of a new free weekly food waste collection service across Redbridge will start later this year

10,000 homes in the borough will be included in the first phase in November.

The move is part of efforts to support local people to reduce food waste, improve recycling rates across the borough, and help tackle climate change.

As part of this new service, we will be providing homes with a small kitchen caddy for food waste, and an outdoor food bin to empty the kitchen caddy waste into.

If you are in the first phase of the scheme's roll out, you will get your caddy and bin in November in time for your first food waste collection at the end of November.

Collections will be weekly and in conjunction with your normal household waste and recycling collection.

There's no need to contact us at this stage. If your household will be in phase 1 of the collections, we will contact you directly in October. Please note flats will not be included in the service at this time.

Keep an eye out for adverts, letters to households and leaflets about the service!

Why is Redbridge Council introducing food waste collections?

Tackling the climate emergency

Around 40% of the household waste collected in Redbridge is currently food waste and it has a negative impact on the environment by contributing to greenhouse gas emissions such as methane, which is 25 times more potent than carbon dioxide in

creating global warming. By recycling more food waste, we can collectively, as a community, reduce the borough's carbon footprint.

Saving money

Recycling food waste saves the council money that can be reinvested into other essential services for the community.

New legal requirements

Councils will soon be required to collect food waste separately from other household waste. This ensures that food waste is sent to specialised processing facilities, to be converted into renewable energy and fertiliser.

What you can put in your food waste bin:

- meat, fish and bones (cooked or raw)
- fruit and vegetables
- bread, pastries and cakes
- rice and pasta
- eggs and dairy products
- tea bags and coffee grounds
- plate scrapings

Remember, composting is also a great way to reduce your food waste. It's nature's process of recycling food and garden waste into a valuable and nutrient-rich food for your garden.



Find out more about home composting on

<https://www.redbridge.gov.uk/bins-waste-and-recycling/garden-waste/home-composting/>

Looking for ideas to help you cut down on your food waste at home? Discover top tips and advice on

<https://www.redbridge.gov.uk/our-streets/love-food-hate-waste/>

Careers in Adult Social Care

Redbridge Institute, in collaboration with Work Redbridge and Care Providers Voice, launched “Passport to Adult Social Care.” A one-week programme, it was aimed at individuals exploring a new career pathway

The programme provides introduction to the sector and interview preparation, with a direct route into employment.

“A feature of the programme was the guaranteed job interviews offered. I received three job offers after completing the programme. The training provided me with a solid foundation for my role as a care assistant. Support with interview preparation really boosted my confidence when meeting potential employers.” **explained Mohammed, a learner on the programme.**

Thriving in his new role, Mohammed credits the training, on how it helped him feel prepared and capable from day one. “Every day feels rewarding, especially knowing I am making a positive difference in people’s lives. A highlight for me has been building strong relationships with the individuals I care for, helping them feel comfortable, safe, and valued.”

“I would definitely recommend Passport to Adult Social Care programme to anyone considering a career in this field. The training not only provides essential skills but also offers continuous support, from interview preparation to job placement. It’s a fantastic opportunity for anyone passionate about care.”



William Pickford, Principal at Redbridge Institute, said,

“Through our close partnership with Redbridge Council, we’re proud to offer local people accessible, high-quality courses that help them gain vital skills, move into employment, and realise their career aspirations. Mohammed, one of our recent students, is a shining example - his journey from learning to landing a job is a testament to the impact of our programmes, and we couldn’t be prouder of him.”



RIAE
Redbridge
Institute
of Adult Education

**Gain skills,
get qualified &
build a new career**

Enrol now for 2025/26

www.redbridge-iae.ac.uk

Early Years Childcare

English

Maths

Teaching Assistants

JOIN US inILFORD

f facebook.com /inilford X x.com /inilford i instagram.com /inilford www.inilford.com



SCAN ME



Christmas inILFORD VOCAL COMPETITION 2025

COUNTDOWN TO 100 YEARS OF ILFORD



FREE
ENTRY

11:30 am - 7:30 pm

November 22nd, 2025

Ilford High Rd.
(By Redbridge Town Hall &
Exchange Ilford)



SCAN ME

Entries Open:
Sep 1st - Oct 31st, 2025

Email Cyril at cyril@ilfordbid.com
to Secure Your Spot!

Christmas inILFORD TALENT SHOW 2025

COUNTDOWN TO 100 YEARS OF ILFORD

November 22nd, 2025 11:30 am - 7:30 pm

Ilford High Rd.
(by Redbridge Town Hall & Exchange Ilford)



Entries Open: Sep 1st - Oct 31st, 2025

Email Cyril at cyril@ilfordbid.com
to Secure Your Spot!



SCAN ME

Christmas inILFORD 2025

COUNTDOWN TO 100 YEARS OF ILFORD



FREE
ENTRY

GAMES | FOOD MARKET | LIVE MUSIC | FIREWORKS
SANTA'S GROTTO | FAIR RIDES

11:30 am - 7:30 pm

November 22nd, 2025

Ilford High Rd.
(By Redbridge Town Hall &
Exchange Ilford)



SCAN ME

www.inilford.com

ILFORD & REDBRIDGE BUSINESS AWARDS 2025

COUNTDOWN TO 100 YEARS OF ILFORD



NOMINATIONS
ARE OPEN!

UNTIL 31ST AUGUST



NOMINATIONS



ilfordbid

Redbridge students celebrate A-Level and GCSE success

Hard work pays off as Redbridge students beat national averages

There were smiles, cheers, and even a few happy tears across Redbridge as students opened their A-Level results and celebrated years of hard work finally paying off!

It wasn't just A-Level students making headlines - GCSE students in Redbridge also triumphed this year, with results coming in above the national average. What makes their achievements even more special is that many of them studied through the tough COVID-19 lockdowns. Despite the challenges, they stayed focused, worked hard and came out on top.

At Seven Kings School, nearly 80% of all exam entries were awarded a Grade 5 or above, and almost 40% received top grades at Grade 7 or higher. Across Redbridge, 77% of students passed both English and maths at Level 4 or above - well above the national average of 65% last year.



Councillor Kam Rai, Leader of Redbridge Council, pictured far right, visited Caterham High School to meet students as they opened their A-Level results. Praising the students' achievements, he said,

"Huge congratulations to students across Redbridge, who have worked incredibly hard for their results this year.

"I have met some wonderful young people who have overcome huge challenges like

homelessness, language barriers and disability to achieve fantastic grades. They now have exciting futures ahead of them, with the world at their feet.

"I would also like to thank the borough's schools, teaching staff,

governors, and all those involved in PTA bodies, and supportive parents, for the exceptional commitments to nurturing students and supportive parents and preparing them for the next chapter of their lives."

COLOURS of Redbridge **FREE**

OTHER WORLDS

Be transported to a world of new experiences

'Golden Hour' Immersive Food Experience, Until Sat 20 September
'Home Away from Home' Touring Truck Art, Until Sun 05 October
'Dance for Fitness', Coming Soon

www.colours.redbridge @coloursofredbridge 020 8708 2858 (option 4)

Community Action Redbridge LOXFORD Ilford [space] VISION

Positive Ageing Week Event

Join us on International Day of Older People – **Wednesday 1 October 2025** Enjoy a day of stalls, information sessions, exercise tasters, advice, and free NHS health checks.

Age UK will also be hosting events across Redbridge for Positive Ageing Week (29 Sept – 3 Oct)

Wednesday 1st October 2025, 10am - 3pm
Redbridge Central Library, Ilford, IG1 1EA

Venue is wheelchair accessible
Lunch & Refreshments provided

NHS London Borough of Redbridge Redbridge, Barking & Havering ageUK

Redbridge Council's **Healthy Bus** is out in the borough giving FREE blood pressure checks

Checking your blood pressure could save your life

With high blood pressure affecting thousands of people in Redbridge, getting yours tested can help prevent serious health problems from developing.

High blood pressure, also known as hypertension, affects 1 in 3 adults in the UK - but it often has no symptoms. That means many people don't even know they have it.

In Redbridge, around 41,000 people have been diagnosed with high blood pressure. If left untreated, it can lead to serious health problems like:

- Heart failure
- Stroke
- Kidney disease
- Vascular dementia

Heart and circulatory diseases affect about 22,000 people in Redbridge and are linked to over 1 in 4 deaths in the area. That's why it's so important to know your blood pressure numbers.



Resident getting their blood pressure checked

You can check your blood pressure:

- At home with a monitor
- At your local pharmacy
- By visiting your GP surgery

HEALTHY
Redbridge

Did you know?

- The ideal blood pressure is below 120/80 mmHg
- 6 million people in the UK have high blood pressure and don't know it
- Every day, 350 people in the UK have a stroke or heart attack that could have been prevented

This autumn, take charge of your health. A simple blood pressure check could make a big difference - and even save your life.

You can also visit our Redbridge Healthy Bus for free blood pressure checks, as well as your blood sugar levels and BMI. Find out when the Healthy Bus is coming to your area

www.redbridge.gov.uk/health-and-wellbeing/healthy-redbridge-bus

Inspirational - Caroline's journey of strength, courage, and determination

Mum of two from South Woodford shares how exercise has helped her live with cancer



My name is Caroline and I am a 47-year-old veterinary surgeon and runner from South Woodford where I live with my husband and two children. I also have incurable breast cancer.

I was first diagnosed in 2014 aged 36. After eight years in remission the cancer returned in 2022 and since then has spread to my bones, liver and brain. Over the past 11 years I've had multiple surgeries, radiotherapy, hormone treatment and chemotherapy - but none of this has stopped me running.

Since my second diagnosis three years ago I've run three marathons, an ultra marathon, cycled the 100 mile Ride London, climbed Kilimanjaro and recently completed a half Ironman triathlon.

I'm passionate about promoting the benefits of exercise for cancer patients. Research shows that staying active reduces treatment side effects and lowers the risk of recurrence. But you don't need to run marathons or climb mountains - exercise can be anything that moves your body and brings you joy: walking, yoga, dancing, roller skating - whatever works for you.

I'm also an ambassador for 5k Your Way - a support group that meets on the last Saturday of every month at Barking parkrun. We're a group of doctors, patients and supporters who encourage cancer patients and their families to become more active. You don't have to run. You can walk as much or as little as you like or simply join us for coffee and a chat.



Peoples of all ages, walks of lives and fitness levels join 5k Your Way to stay fit and active

For more information please visit

<https://www.moveagainstcancer.org/5k-your-way/>

Helping local people through the cost-of-living crisis

Putting money back in residents' pockets and building a stronger safety net for local people

Redbridge Council is taking strong action to tackle poverty and support residents through the continued cost-of-living crisis. In addition to processing benefits, our friendly team help those most in need to ensure they're receiving all the money and support they're entitled to. Too often people aren't taking up all their entitlements yet are living in very difficult circumstances. This support results in more money in local people's pockets and better financial security for families across the borough.

The Benefits Service works with other council teams to make sure support is joined up and easy to access. They work with the Council Tax team to check for discounts and reductions, with Work Redbridge to help residents find jobs, and with children's and adults' services to support families and vulnerable people when they need it. They also work with housing teams to help people stay in their homes and with the Reach Out service to support those facing domestic abuse.

The team is dedicated to helping local people in Redbridge, and actively find people who need help. They visit residents at home, hold events at community centres and hubs, and offer support over the phone. They explain what people can claim, and help with filling in forms, which is especially important for people who may find it harder to access support.

Real results for local people

Our work is already making a big difference across Redbridge. So far, we've helped:

Local people claim

£547,178

in annual Pension Credit

putting more money into the pockets of older people. This is money from central government, so it's important it's in the hands of people who need it in Redbridge.



83 households

apply for Healthy Start which gives families with young children vouchers for healthy food and vitamins.



252 students

enrol for free school meals saving local families £47,291 and securing £308,390 in Pupil Premium funding for local schools.

And here's what some of our residents have said about the support they've received:

"Thank you for your help with the issues I had been facing. I checked my rent account this morning and it's been updated — I'll continue to stay on top of it. I can't thank you enough for your help, care, and attention."

"I didn't know I was entitled to Pension Credit until the benefits team helped me fill in the forms - now I have a little extra each week to help with bills."



Staff from the Benefits Service are regularly out in the community, offering advice and support to help local residents access the benefits they're entitled to

Cllr Kam Rai, Leader of Redbridge Council said,



"In Redbridge, we believe no one should have to face financial hardship alone. Our Benefits Service is doing vital work to put money back in people's pockets and build a stronger safety net for families. By actively reaching out and joining up support across council teams, we're helping residents access the help they deserve and live with greater dignity and security."

To get in touch with the benefits service, please visit:

<https://eforms.redbridge.gov.uk/welfare-benefit-referral-form>

or call: 020 8708 4180 (Mon-Thurs, 9am-12.30pm)

For more information on the community grocery, please visit:

<https://communitygrocery.org.uk/ilford/>

For more information on the debt advice service, please visit:

<https://costofliving.redbridge.gov.uk/>



My Life in Redbridge

By Mariam Attarwala

Living in Redbridge has shaped who I am in more ways than I can count. It's a place full of life, colour, and culture, and I honestly couldn't imagine growing up anywhere else. One of the things I love most about Redbridge is how diverse it is. No matter where you go, you're surrounded by people from different backgrounds, cultures and faiths, and that's what makes it feel so welcoming. There's comfort in knowing that you're part of a community that embraces difference and encourages unity.

I've always felt safe and supported here, not just by friends and family, but by the wider community too. Everyone looks out for one another, whether it's a quick chat at the corner shop, a smile from a stranger, or seeing neighbours help each other out without being asked. It's the kind of place where people genuinely care.



One of the ways I stay connected with my community is through volunteering with Human Appeal. They're a global charity that do incredible work, and I've had the chance to support some of their events across East London, including the ones held at the Coliseum Suite in Ilford. The experience has been nothing short of amazing. Volunteering has not only taught me valuable lessons, but it's also brought me closer to people I wouldn't have met otherwise. It's humbling, challenging, and so rewarding.

If I had to sum up life in Redbridge in three things, it would be this:

First, stay connected with your community and your neighbours, it makes life so much more meaningful and exciting. It's nice to know who makes up your community.



Second, volunteer when you can. It's one of the best ways to grow, give back, and get to know people on a deeper level.



And lastly, be accepting. Redbridge is made up of so many kinds of people, and that's what makes it beautiful. There is no space for hate when we're all just trying to live our lives the best way we can.



Redbridge is working towards being formally recognised by UNICEF UK as a child friendly borough, where we listen to children and young people, we raise their voices up, and we include children's views in our local decision-making.

www.redbridge.gov.uk/childfriendly



Spotlight on our superb local businesses

Local businesses create jobs and make our borough a vibrant place to live. Here's how three businesses are helping their community

We caught up with local business owners to find out what products or services they provide and to find out what they enjoy most about running a business in the borough.



Nicola stands proudly among vibrant fruits, vegetables, and satisfied customers

Ilford Fruit and Veg Stall

Everyday you'll find the hugely popular Ilford fruit and vegetable stall, opposite Santander bank, selling delicious and fresh pineapples, plums, courgettes and other beautiful produce.

Nicola has been running the stall for seven years, but her story goes back much further. "I'm the fifth generation of green grocers in my family," she says proudly. Her parents and grandparents ran a stall at Queens Market in Upton Park, and it was there she met her husband, Glen Hutcherson. Together, they decided to open their own fruit and vegetable stall in Ilford which has become a much loved and popular business in the town centre.

The stall sources fresh produce from New Spitalfields Market, ensuring customers get quality fruit and veg at a reasonable price.

Nicola said, "We're happy to serve the people of Redbridge. It means a lot to keep our family tradition going and be part of this community."



Alix pictured with a pet client, moments before a pampering session

Mark's Barks Dog Grooming

Mark's Barks is a much-loved dog grooming, daycare, and training business and is based in the heart of Clayhall. Run by husband-and-wife team Mark and Alix, the business has been serving the local community since 2023, building a loyal following of happy dogs – and even happier owners.

Mark's Barks offers a full range of grooming services, from baths, blow dries, nail clipping and hygiene trims, helping your furry friends look and feel their best.

We caught up with Alix, who shared what she enjoys most about the job,

"I love dogs, and the chance to work with different ones every day – each with their own special personality – makes every day so rewarding and enjoyable."

When it comes to running a business in Redbridge, Alix said,

"It's fun and special, especially as I live in the borough myself. We get customers from across Redbridge and beyond. People are lovely to serve, there's a real community spirit, and I'm proud to offer our services to residents and those from further afield."



Tamanna pictured inside the Redbridge location of Peaches Bubble Tea.

Peaches Bubble Tea

If you're looking for something fun, fresh, and full of flavour, Peaches Bubble Tea is the place to go. Based in Seven Kings, they sell a wide variety of bubble tea flavours and refreshing speciality drinks. But it's not just about drinks – they also serve yummy treats like Dutch pancakes, waffles, and other delicious snacks that keep customers coming back for more.

Opened in 2002, Peaches Bubble Tea is run by passionate trio, Sadikur, Hanif and Tamanna who have worked hard to make their business a much-loved part of the local Redbridge community.

Tamanna said, "Our business goes beyond great service. We're committed to giving back, and regularly organise charity drives to help those less fortunate. We're proud to serve not just customers, but the wider community too."

Ilford arrival project gains momentum with focus on walking, cycling and relaxation

£3 million grant from GLA to bring the river and nature closer to Ilford town

The Ilford Arrival project aims to transform the walking route between Wanstead Park, Roding Valley, and Ilford town centre. The goal is to help residents and visitors move around more easily and enjoy spending more time in natural spaces like parks and rivers. With plans for it to be ready in 2027, Ilford Arrival is set to bring long-lasting benefits to the community.

Last year, Redbridge Council secured a £3 million grant from the Greater London Authority's (GLA) Civic Partnership Programme to improve public spaces and encourage walking and cycling by connecting local people and visitors to green and blue areas. Through research, the area south of Ilford was found to have extensive and largely untouched green spaces - perfect for walking, cycling, and enjoying nature.

The plan is to create lovely new spaces for everyone to enjoy. There will be a small pocket park where you can relax, a new bridge over the River Roding for people walking, cyclists and riverside walkways to explore. Ilford Arrival is being shaped by the local community, and if you're interested in sharing your opinions or keep up to date with the project, please visit <https://engage.redbridge.gov.uk/ilford-arrival>



**VISION
IS THEATRE**

PRESENTED BY
REDBRIDGE CREATES

The
**WONDERFUL
WIZARD
of OZ**

Monday 8 - Wednesday 31 December

Redbridge Drama Centre, Churchfields, South Woodford, E18 2RB

Find out more at vrcl.uk/wizard or call 020 8708 8800



Do you **vote by post** in elections?



IMPORTANT. If you were recently contacted by Redbridge Electoral Services about your postal vote expiring, you must **RE-APPLY now** to be able to continue to vote by post.

Please visit <https://www.gov.uk/apply-postal-vote> to complete a new application form. Alternatively, you can call 020 8708 7171 to request that a paper form is sent to you.

What is a postal vote?

A postal vote is a way for people to vote in an election without going to a polling station in person. You will receive your ballot paper by post, complete it along with your postal voting statement and return it in the envelope provided.

You must be registered to vote to apply for a postal vote. You can register online at <https://www.gov.uk/register-to-vote> or by calling 020 8708 7171 and asking for a paper form to be sent to you.

Re-apply now if you would like to continue to vote by post in future elections

Changes to the landline network



Cllr Helen Coomb, Cabinet Member for Resources and Transformation, said, "We've been working closely with landline providers to identify vulnerable customers ahead of the switch. Sharing information with these providers will enable them to offer the necessary support to those who need it most, ensuring they're not alone in this transition."

We're working with the UK's leading phone companies to help vulnerable residents prepare for the shutdown of the old landline network.

By January 2027, the analogue technology that has connected homes and businesses across the country for decades will be switched off. This transition will be seamless for most users. However, vulnerable individuals who rely on telecare alarms will need special attention to ensure their alarms continue to function correctly during the switchover.



We're assisting vulnerable residents ahead of the landline switchover to ensure they stay connected

Find out more at www.digitalphoneswitchover.com

Are you looking after a child who is not your own?

London Borough of
Redbridge



- is the child under 16 (or 18 if they have a disability)?
- are you NOT the child's step parent, sibling, aunt, uncle or grandparent? This also includes host families to overseas students
- do you plan to have the child with you for more than 28 days?
- this is called '**private fostering**' and we must be LEGALLY notified to ensure the child is safe

Please contact Redbridge Children's Services
020 8708 3885 CPAT.Referrals@redbridge.gov.uk
or visit www.redbridge.gov.uk/private-fostering

LOCAL COMMUNITY
Fostering
REDBRIDGE

London Borough of
Redbridge

Share homes. Shape lives.

Foster for Redbridge Council

We want to hear from you whether you're just considering fostering for the first time and want to find out a little more, or if you're an experienced carer looking to transfer from an independent fostering agency.

Take the first step. Call us to find out more about fostering for our fabulous Borough.

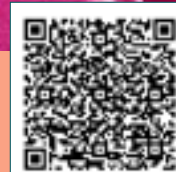
"The thing I love most about fostering for Redbridge Council is seeing the progress children and young people make during the time they are with us. From surviving to thriving."

Tracy, Redbridge Council Foster Carer



Contact us

Local Community Fostering Redbridge 020 8708 6068
www.redbridge.gov.uk/fosteringlife



Community Activity Day

brings neighbours together in a show of warmth and support

Council staff supported local people to get advice on benefits and financial support, and get help finding work and improving their CVs through the Work Redbridge service. The cleansing team helped spruce up the street, and people were able to get their blood pressure checked on the Healthy Redbridge bus.



Habiba said,

"It's been amazing. Since 2001 it's the first time I've seen this type of community event on Roman Road. I'll look forward to planting my flowers. The kids are happy because of the entertainment."



Linda said,

"Today has been amazing. The Street Cleansing Team provide fantastic services!

I really like the staff - I've built a good relationship with the team over the years and have reported fly tipping over the years."



Roman Road's residents supported each other, helped tidy their street and found out about local services available to them



Councillor Kam Rai, pictured centre right, Leader of Redbridge Council said,

"In Redbridge, communities come together to support each other, and I was delighted to see everyone caring so much about their street, their neighbours and to see so many people pitching in and helping to keep their neighbourhood clean, green and beautiful."

Thank you to Redbridge Garden Centre for providing the plants



Have you got a piece of furniture, fridge or other large item to get rid of? Book a FREE bulky waste collection at <https://www.redbridge.gov.uk/bins-waste-and-recycling/book-a-bulky-waste-collection/>

Book the Healthy Redbridge Bus to visit your community group <https://www.redbridge.gov.uk/health-and-wellbeing/healthy-redbridge-bus/>

Interested in volunteering in Redbridge? <https://volunteering.communityactionredbridge.org.uk/>

Seen a fly-tip? Report it at <https://www.redbridge.gov.uk/report-it/> or via the Love Clean Streets app.

Budget

2026/27



Redbridge Council is preparing its budget for 2026/27

Cllr Vanisha Solanki, Deputy Leader, outlines the financial challenges ahead

Government funding for Redbridge remains based on outdated data that fails to reflect the borough's current needs. Since 2010, we've lost over £160 million annually. That is more than 54p of every £1 once provided. Redbridge is now the fourth-lowest funded London borough, yet we face the same challenges as many inner London councils. With average London funding, we would receive an additional £66 million every year.

We're supporting a growing number of children and adults in need of social care, 3,000

households in temporary accommodation, and 8,000 people on the housing waiting list, all while having one of the lowest levels of social housing stock in London.

Despite these challenges, Redbridge continues to deliver excellent services for every pound spent. We were recently ranked number one in London and second nationally for efficiency and productivity by IMPOWER.

We recognise that public finances are stretched nationally and empathise with the

challenges the government faces. However, we urge the government to review the fairness of the current funding model and the outdated data used to calculate our allocation. It must reflect the real demand we face here in the borough.

Despite financial pressures, we remain committed to delivering essential services within the available funding. We will continue lobbying the government to secure fairer funding and access to resources that meet the needs of our growing community.



Have your say

We've launched our budget survey and want to hear from you about what matters most. Share your thoughts by visiting engage.redbridge.gov.uk/budget-2026-27



Celebrate our greatest people and places with a People's Plaque

A new plaque scheme has launched in the borough, and you're invited to suggest where they should go

The Redbridge People's Plaque Scheme celebrates people, buildings, structures, open spaces, parks or events that have shaped the borough's rich history and vibrant communities.

To mark the 80th anniversary of Victory in Europe Day, the first plaque was unveiled at Fairlop Waters, honouring the area's contribution as an airfield during both World Wars.

Please give us your plaque suggestions. You can nominate:

- individuals • groups • buildings or structures
- open spaces and parks • events

They must have a clear and/or historical connection to Redbridge. For example, they could be individuals who have lived or worked in the borough, or buildings, places and events of cultural, historical or community significance.



Councillor Kam Rai, Leader of Redbridge Council said,
 "We have a beautiful borough that's steeped in history. Redbridge has been home to some outstanding people, including Sylvia Pankhurst, Maggie Smith and many more. This plaque scheme will enable us all to learn more about those who came before us and to celebrate our wonderful history."



The leader of the council and members of community came together to unveil the first People's Plaque

You cannot nominate council employees, councillors, council members and local MPs.

Nominate online at www.redbridge.gov.uk/redbridge-peoples-plaques

Your nomination will be reviewed by the Redbridge People's Plaque Panel, chaired by one of our councillors and including local stakeholders and representatives from community and youth groups.

Protecting and expanding allotments for local residents

Redbridge Council has made a firm commitment to protecting existing allotments and create new growing spaces for the future



Allotments are among the most cherished green spaces in Redbridge, and demand for them has never been higher. With 24 sites across the borough - and all council-owned sites currently full with oversubscribed waiting lists - it's clear how valued they are by our community.

That's why as part of the Fairlop Waters Masterplan, we will be allocating additional land for allotments, giving more residents the opportunity to grow their own fruit and vegetables, spend time outdoors, and connect with a thriving local community.

Leader of Redbridge Council, Councillor Kam Rai, said,



"Our allotments are incredibly popular and every council site in Redbridge is full, which tells you everything about the demand we are seeing locally.

"We are proud to protect these much-loved spaces and to expand them where we can, starting with new provision through our Fairlop Waters masterplan. This is about investing in the things that matter to people and keeping Redbridge a great place to live."



We are proud to support our allotment sites and are actively working to expand our offer. The benefits are clear: allotments promote healthier lifestyles, reduce isolation, and help nature flourish. We want more people in Redbridge to experience these advantages.

Celebrate safely this Autumn

Fireworks, candles, and community spirit – let's keep it joyful, safe and kind to pets and neighbours

Autumn is a season full of joyful celebrations - from Bandi Chhor Divas, Diwali, and Rosh Hashanah, to Halloween, Guru Nanak's birthday and Bonfire Night. Many of us will be lighting candles, sparklers, and fireworks to mark these occasions. It's a wonderful time to come together, but it's also important to stay safe and be mindful of others.

If you're planning to use fireworks, always follow safety instructions. Consider going to an organised fireworks display if you can - it's safer and often more spectacular. If using fireworks at home, store them safely and only for a short time. Please don't use fireworks near buildings, and never on a balcony of a flat. Always keep a bucket of water nearby and never leave lit items unattended.

And don't forget - loud bangs and bright flashes can be frightening not just for pets, but also for young children. If your neighbours have animals or small children, let them know in advance or set off fireworks in a quieter spot away from their homes.

Celebrations are better when everyone feels safe and included. So, let's enjoy the season with care, kindness and a little extra thought for those around us.

Wishing you a joyful and safe celebration!

For more information on how to safely use fireworks, please visit
<https://www.rospa.com/home-safety/fireworks-safety>



A new chapter: How Redbridge's regeneration is changing the lives of local people



Redbridge's regeneration programme is transforming lives across the borough

For Janelle and Berda, moving into their new homes means the beginning of a new chapter filled with dignity, stability, and hope.

Janelle, who recently moved into Little Gearies, spent years grappling with the stigma of disability and the instability of temporary housing. **"I used to hide my disability, now I've accepted myself. I feel blessed – my children have space, we have routines, and we're finally building a life."**

Berda, who has lived in Redbridge for 30 years and has now settled in Suffolk Court, waited over a decade for a permanent home that met her needs. **"We used to sleep and cook in the same room,"** she recalls. **"After my operation, I couldn't manage stairs. But now everything's on one level. Our life is perfect."**

Both homes are part of Redbridge Council's estate regeneration programme that is improving communities for residents. By the end of

the year, the council will have delivered 600 new council homes, designed to meet the needs of local families and create stronger neighbourhoods.

During a recent visit, Councillor Kam Rai, Leader of Redbridge Council, met with Janelle and Berda to hear first-hand how the move has impacted their lives. He said,

"These stories remind us why regeneration matters. It's not just about buildings, it's about people. These developments show what's possible when we invest in our communities. Everyone deserves a safe, secure home and I'm proud that Redbridge is working hard to deliver on that promise."

Little Gearies has delivered 103 new affordable homes for local people – a mix of flats, houses, and maisonettes – built with sustainability in mind. Features like solar panels and air-source heat pumps help reduce

Councillor Kam Rai meets with Janelle in her new home at Little Gearies



Berda and Councillor Kam Rai discuss how the move to Suffolk Court has transformed her family's lives for the better



energy bills and support a greener future. Meanwhile, Suffolk Court has added 40 new homes through an infill development, making better use of existing estate space without displacing current residents.

Despite some initial resistance from parts of the community, both women spoke passionately about the importance of welcoming new developments.

"I've met lovely neighbours," said Berda. "We say good morning, children play outside. It feels like a real community."

Janelle echoed the sentiment, "We're all on different parts of the spectrum, but we support each other. This home: it's a fresh start."

As Redbridge continues to build, stories like Janelle's and Berda's serve as powerful reminders of the human impact behind the bricks and mortar. These homes are more than structures but act as foundations for brighter futures.

Landlords warned to get their properties licensed

Zero tolerance approach sees fines and prosecutions as Redbridge Council cracks down on rogue landlords

Most landlords are responsible and care about the tenants living in their properties. They keep these homes in good order, and are licensed properly.

However, there are a number of landlords in our borough who are not licensed and who are not taking care of their properties. Redbridge Council is sending a warning to these landlords: fix and maintain your properties now, or we will come after you, and we will prosecute you.

While investigating landlords who hadn't applied for a licence, the Housing Enforcement team visited a property in Valentines Ward. They found a freezing cold home, with serious fire and electrical hazards, white goods in the garden, and cockroaches on walls. They served an Improvement Notice to ensure the property was brought up to scratch and a licence was sought. The landlord was also issued with a civil penalty of £61,000.

**Councillor
Saima Ahmed, Cabinet
Member for Housing
and Homelessness said,**



"The team found this property in a terrible condition. It was unsafe, escape routes were blocked, there were dangers around electrics and there was a cockroach infestation that needed to be dealt with. We immediately took action to protect the tenants as part of our crackdown on those landlords who aren't maintaining their properties. We want everyone in Redbridge to live in safe, secure and well-maintained homes."

**We are cracking down
to protect tenants**



Do you rent in the private sector?

- Are the means of escape blocked?
- Electrical goods outside your property?
- Are there serious hazards in the property?

If you have an issue in your home, contact your landlord in the first instance. It's advisable to put it in writing, via a letter or email. Keep a copy of all correspondence. If your landlord still does not resolve the issue, we may be able to support you.



**You can report your landlord online at
www.redbridge.gov.uk/report-it**

Join us for our next **VIRTUAL**
Redbridge Landlord Forum

Thursday 16 October
From 7pm to 9pm

London Borough of
Redbridge



- increase awareness of legislation, policy and procedures
- come and discuss your concerns with experts
- access training and information



Are you complying with your legal requirements for rented properties in Redbridge?

Want to know more about housing enforcement?

Unsure about your responsibilities as a landlord?

To reserve your place scan the QR code here or visit Eventbrite at:
<https://RedbridgeLandlordForumOctober2025.eventbrite.co.uk>





GUARANTEED RENT!

1 Bedroom Property up to **£1,500 pcm**

2 Bedroom Property up to **£2,000 pcm**


3 Bedroom Property up to **£2,500 pcm**

*Terms and Conditions Apply



Contact Us

0207 117 2671

 www.psm-estates.co.uk

THE DANGERS OF WOOD BURNING STOVES

Did you know that lighting fires in our homes is the largest source of harmful small particle air pollution in the UK?



These tiny particles, once inhaled, can cause serious health risks, including asthma, heart disease, stroke, lung cancer, and even dementia.

The best way to protect your health and reduce pollution is to avoid burning wood, coal, or solid fuels altogether. Switch to cleaner energy options like gas or electricity and improve your home's energy efficiency to cut emissions and keep everyone safe.



Let's breathe cleaner air together

For more information, please visit
<https://woodburning.london>
Or scan this QR code



Redbridge Council
Pest Control



What provide:

- Advice and treatment for insect and rodent infestations
- Expert support to identify pests and prevent reoccurrence

Our officers will:

- Investigate your pest issue
- Recommend treatments and explain safety measures
- Offer advice on blocking entry points and estimated timeframes

Pests we treat and cost

Rats	£180
Mice	£180
Cockroaches	£215
Bedbugs* up to three rooms	£300
Each additional room	£40
Garden Ants	£133
Pharaoh Ants	£245
Fleas	£185
Wasps*	£81

*Our wasp treatment service runs from 1 June to 31 October every year

Book an appointment at:

www.redbridge.gov.uk/book-it
or call us on 020 8554 5000

(Monday to Friday 8.30am-6pm)

The charges for these services are reduced by 50% for Residential Owner Occupiers who are in receipt of 73% or more Council Tax Reduction

These prices may be subject to change at the time of booking

