

Redbridge Sustainable Transport Strategy

Keep Redbridge moving

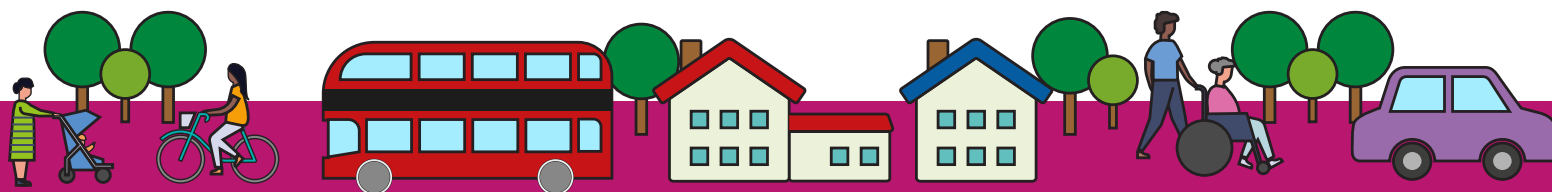
London Borough of
Redbridge





Contents

Foreword	3
Redbridge at a glance	4
What is the Strategy?	5
We have developed this strategy together with our communities	6
Why do we need a Strategy now?	7
Our Vision	8
Key themes and priorities	9
Our themes and priorities	10
Theme 1: Active and safer travel for healthier lifestyles	11-12
Theme 2: Making transport and travel accessible	13-14
Theme 3: Enhancing the environment and responding to the climate emergency	15-16
Theme 4: Keeping Redbridge's economy moving	17-18
Next steps	19





Foreword

Redbridge is a diverse and thriving borough. The choices people make about how they travel have critical impacts on their health, safety and wellbeing. The decision about whether to take the bus, train, cycle, walk or using the car are defined by the transport opportunities available. These transport choices also have wider impacts on the economy, the environment, air pollution and wider climate.

This strategy is designed to ensure that our residents, businesses and visitors have a transport system that serves their needs, now and into the future. This strategic approach looks at all the elements that make up our transport system, the principles that underpin it, and sets out a plan to keep Redbridge moving. This document will guide our choices about where we invest, what we lobby other agencies for, how we cooperate across the

Council and across borough boundaries. It aims to make our streets safer, vibrant, healthy, attractive and good for business.

This strategy supports improvements to both local journeys and Redbridge's connectivity to central London and the surrounding areas, enabling communities to thrive across the borough. We will lobby for improvements to public transport that complement local enhancements and give our residents more transport options that will enable everyone to make more sustainable choices.

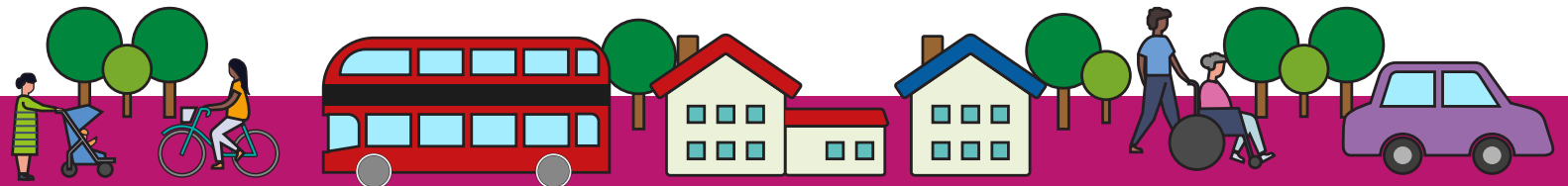
Through this Strategy we will create a fairer transport system to keep Redbridge moving, that is fit for the future and enables everyone - young and old, people of all races, genders and walks of life, to all travel safely, independently and efficiently.



Jo Blackman

**Cabinet Member for
Environment and Sustainability**

Keep Redbridge moving





Redbridge at a glance

Population

310,000 residents in 2021

341,000 residents by 2041

18% increase in 20 years

17,200 new homes



Travel patterns

14 Stations

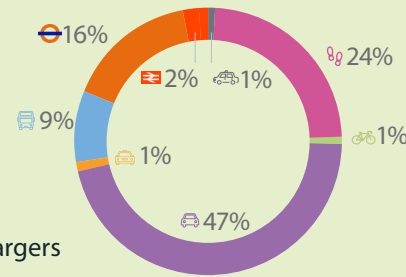
40+ Bus routes

650+ Bus stops

Just under

500 Public EV chargers

Current travel to work mode shares



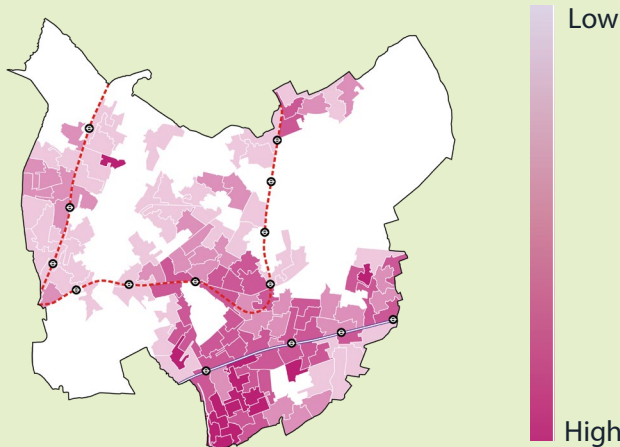
Employment

77,000 employees in 2020

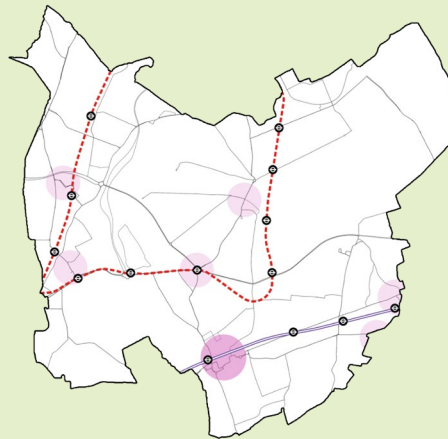
5,000 new jobs between 2015 & 2030



Population density



Accessibility



Over 80% of recorded disabilities affect mobility

4.5% of residents are Blue Badge holders

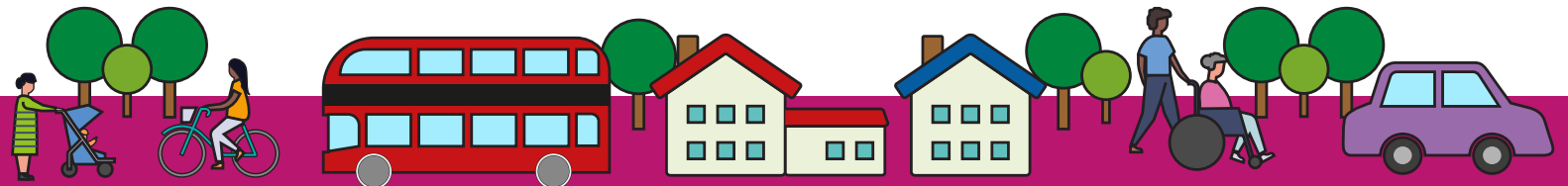


4 out of 4 Elizabeth line stations have step-free access



4 out of 10 Central line stations have step-free access

Keep Redbridge moving





What is the Strategy?



The borough's first Sustainable Transport Strategy with an ambitious vision. We must act now to keep Redbridge moving, safer, cleaner, and greener.



The Strategy is evidence based, policy led and reflects the needs and wants of local communities in Redbridge.



The document sets out a clear plan and targets to keep Redbridge moving, with a focus on safer, more accessible, and greener travel.

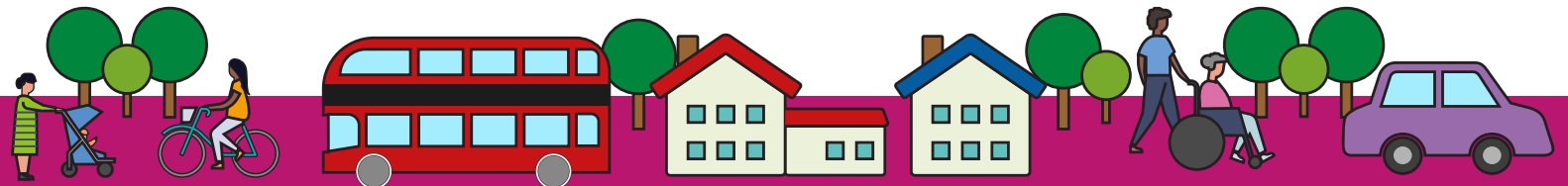


The Strategy recommends the actions that we and our partners will need to take to achieve the vision.



What are the timescales?

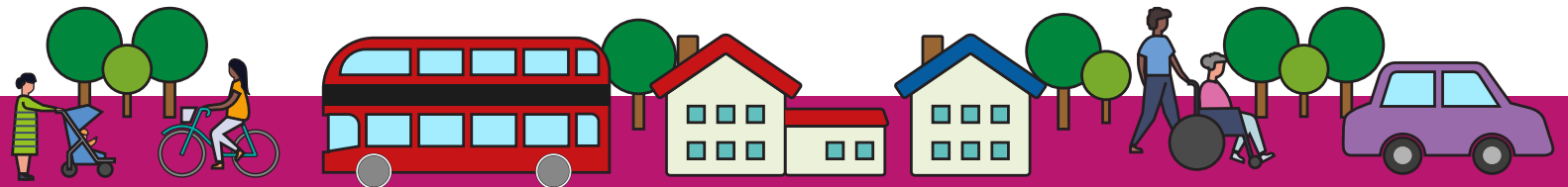
- Our goals and actions fit with the London-wide Mayor's Transport Strategy timeline for 2041.
- This provides a long period of time during which policies and transport infrastructure can change and improve. We will deliver key targets over the short, medium and longer term.





We have developed this strategy together with our communities

- The Strategy has been designed with the support of various groups of people in Redbridge, including:
 - Younger people and schools
 - Elderly people
 - Disability groups
 - Transport stakeholders e.g. Transport for London, Redbridge Cycling Campaign, Cycling Sisters
 - Other community groups
- The challenges and opportunities raised during engagement have helped to inform a range of actions and interventions for the Council and key partners to deliver.





Why do we need a Strategy now?

- Redbridge does not have a dedicated, long-term plan for how transport will develop across the borough.
- Climate and public health emergencies have highlighted the need for intervention.
- If we do not act to make changes to the transport network in the coming years, Redbridge may face new transport problems, and some existing issues are likely to get worse.

What is the impact of 'doing nothing'?



Residents will continue to be **injured** on our road network



More **congested roads** will damage our economy, our health and our environment



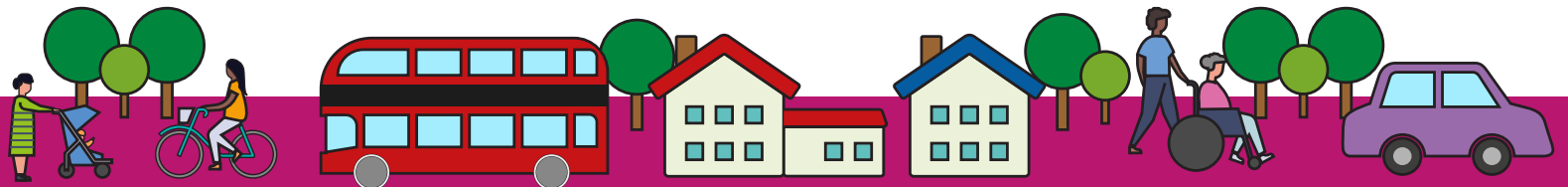
There will be **polluted** and **noisy** environments that are unattractive and bad for our health



There will be **little choice** in travel options, with unsafe roads making walking and cycling less viable



There will be worsening public health and **quality of life** for our residents, workers and visitors





Our Vision

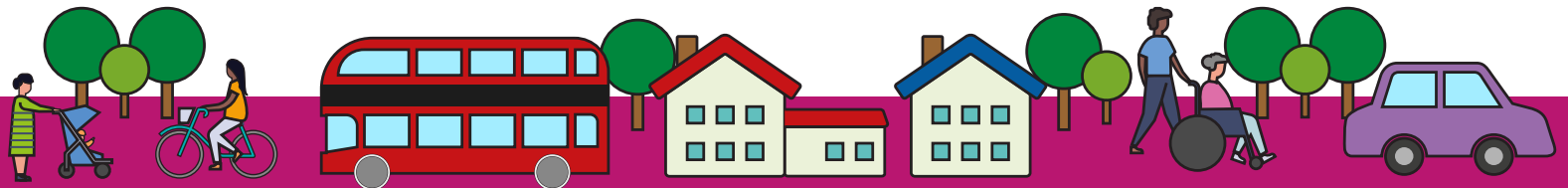
This Strategy sets out a clear **vision statement** of where the Borough needs to be by 2041.

By 2041, travel in Redbridge will be safer, healthier, greener and more inclusive. There will be more affordable choices for all journeys that help us live healthier and more independent lives. At least 75% of all journeys will be by public transport, walking, wheeling (i.e. using of wheelchairs and mobility scooters), cycling or scooting. Our ambition is to create seamless and safe connections between the bus, Underground and rail networks; and an extensive network of zero emissions vehicle charging points that support the borough's carbon neutral ambitions with the aim to keep Redbridge moving.

To keep Redbridge moving:

- Travel in Redbridge will be safer, healthier, greener and more inclusive.
- There will be more affordable choices for all journeys that help us to live healthier and more independent lives, with enhanced and new public spaces, well maintained and accessible pavements and crossings, kilometres of new cycling lanes, new bus routes, and accessible stations.
- At least 75% of all journeys will be by public transport, walking, wheeling, cycling or scooting.
- Our ambition is to create safe and seamless connections between the bus, Underground and rail networks, as well as or people walking, wheeling, cycling and scooting to and from stations and stops.
- We will deliver an extensive network of zero-emission vehicle charging points in Redbridge.

Keep Redbridge moving



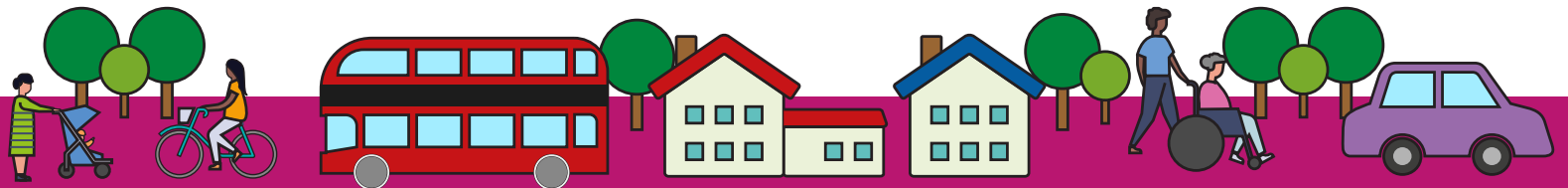
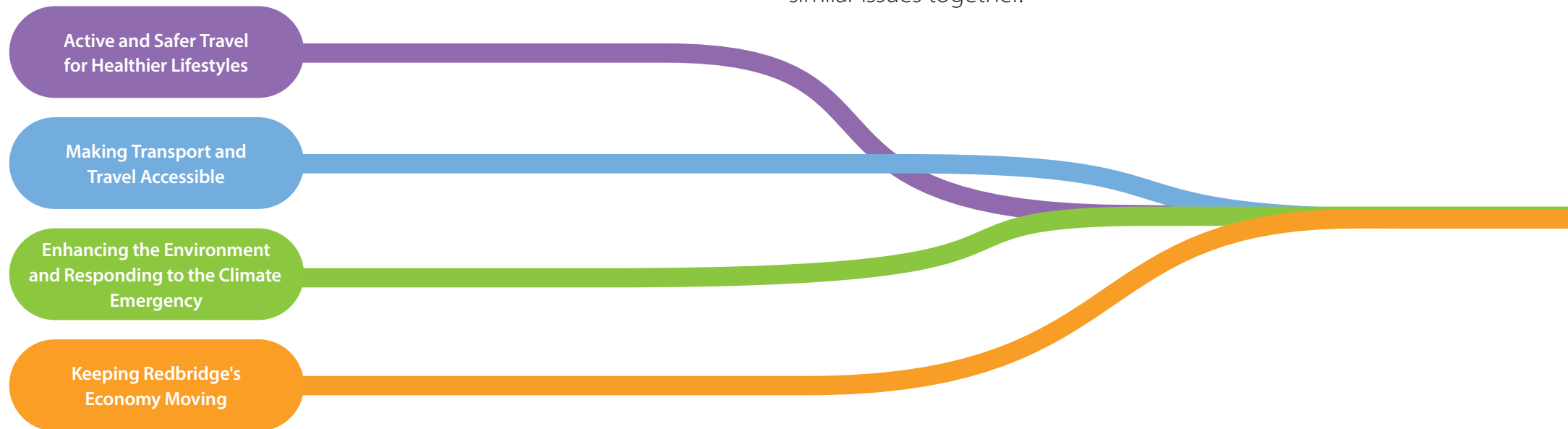


Key themes and priorities

- To deliver on our Vision, we have created four key themes and nine priorities, each related to a topic or issue that the Strategy will address.
- All our priorities are interconnected. By working towards one priority, we will be helping to achieve the others.

How are these used in the Strategy?

- For each priority area, we have undertaken an assessment of existing evidence and identified issues and opportunities. These inform what actions the Council will take on each priority and why.
- Individual actions may address more than one priority at a time, our action plans sit under the four key themes, bringing actions on similar issues together.





Our themes and priorities



Theme 1

Active and Safer Travel for Healthier Lifestyles

- 1 Improving road safety and air quality
- 2 Enabling healthy lifestyles
- 3 Enabling active travel
- 4 Education, promotion and engagement



Theme 2

Making Transport and Travel Accessible

- 5 Increasing accessibility and creating high quality public realm



Theme 3

Enhancing the Environment and Responding to the Climate Emergency

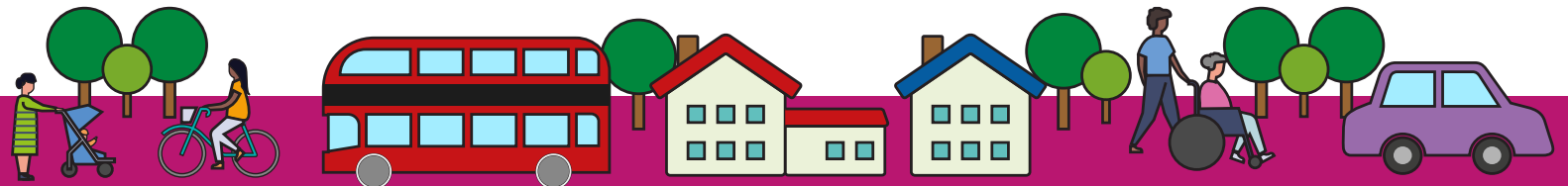
- 6 Enhancing the environment and biodiversity
- 7 Responding to the climate emergency



Theme 4

Keeping Redbridge's Economy Moving

- 8 Supporting housing, jobs and economic growth
- 9 Rethinking freight and servicing




Theme 1

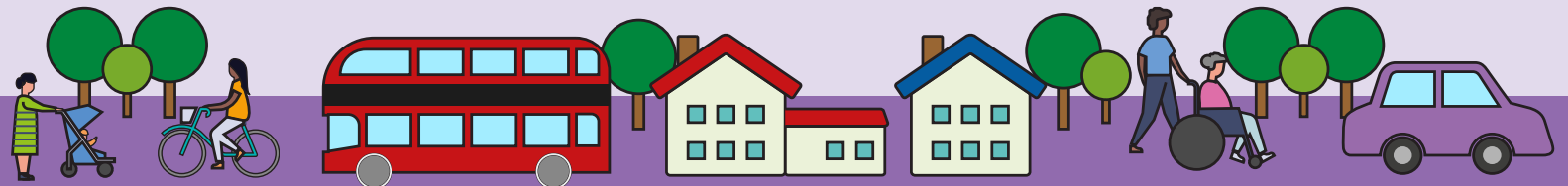
Active and Safer Travel for Healthier Lifestyles

Which priorities are important here?

- 1 Improving road safety and air quality
- 2 Enabling healthy lifestyles
- 3 Enabling active travel
- 4 Education, promotion and engagement

What are we going to do?

- Engage with residents on new road safety schemes
- Implement road safety zones to calm traffic, expand safe crossing points and increase pedestrian safety
- Complete the school streets programme to keep children safe
- Every resident is within a three minute walk of a public charge point by 2030
- Improve our cycle networks as part of the sustainable neighbourhoods programme
- Work with key partners to influence speeding and driver behaviours





Key proposals across the Borough

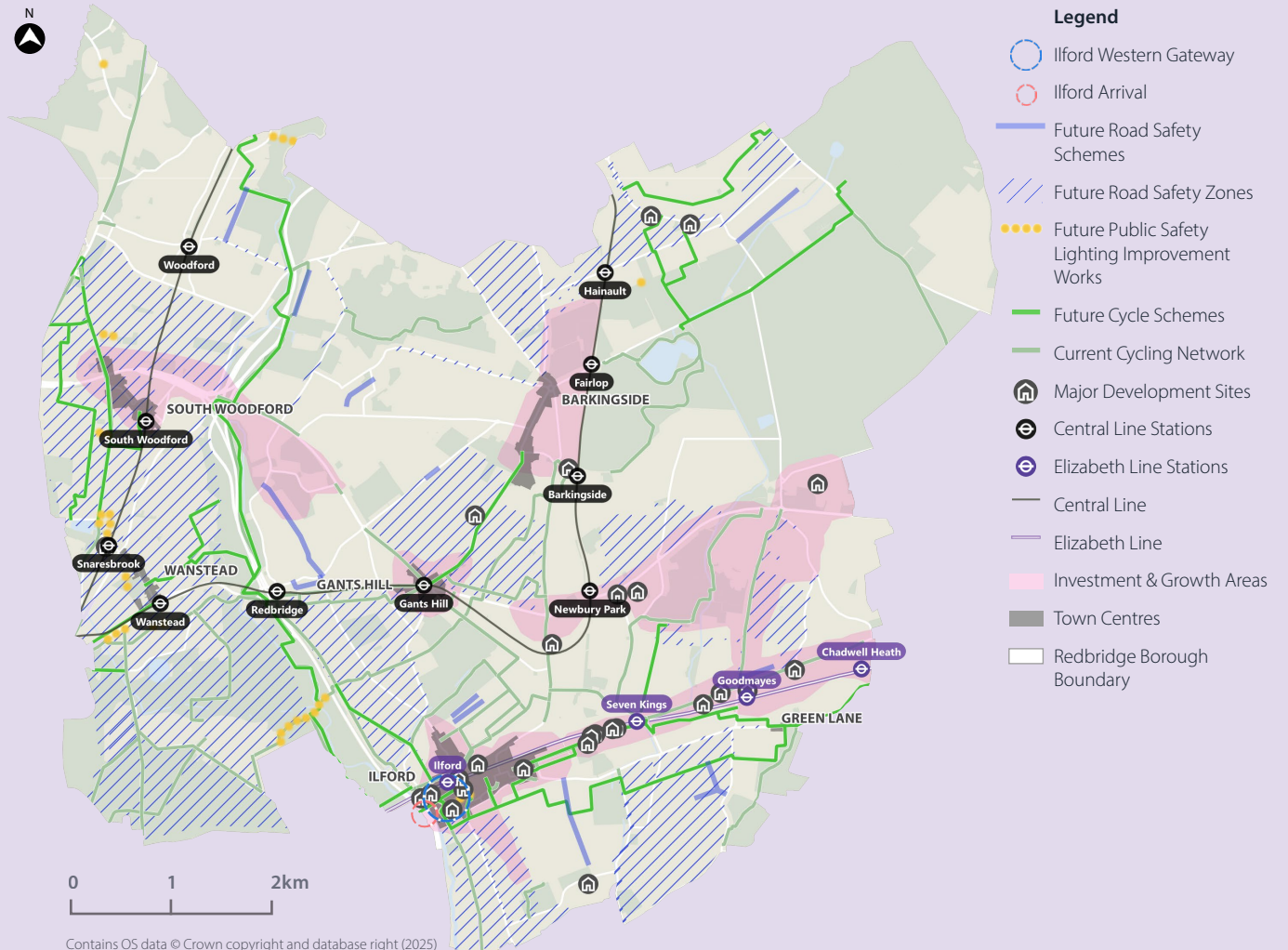
Targets

Reduction in people killed or seriously injured

Where funding is available, increase the number of new road safety zones

Implement public safety works from women's safety group recommendations

Reduce air pollutants that are harmful to public health, in line with the Council's Air Quality Action Plan




Theme 2

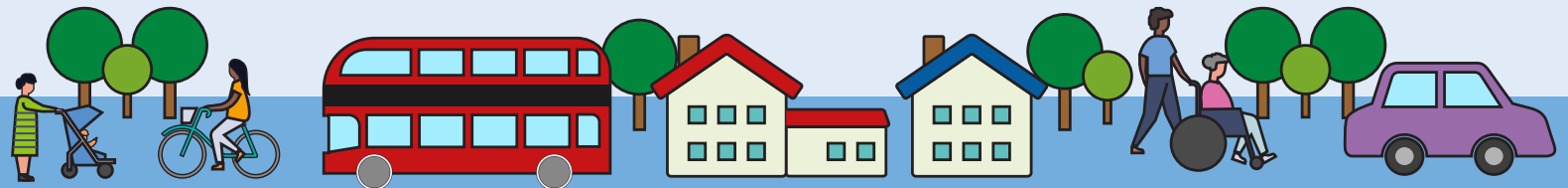
Making Transport and Travel Accessible

Which priorities are important here?

- 5** Increasing accessibility and creating a high quality public realm

What are we going to do?

- Work with TfL and local communities to introduce more bus routes in the Borough and make bus stops accessible
- Advocate TfL to introduce lifts at Wanstead, Redbridge, Gants Hill, Barkingside, Fairlop and Snaresbrook Underground stations
- Improve the public realm by de-cluttering streets
- Encourage groups of children walking to school with one or more adults
- Develop a programme for footway resurfacing
- Improve signage and develop accessible walking maps





Key proposals across the Borough

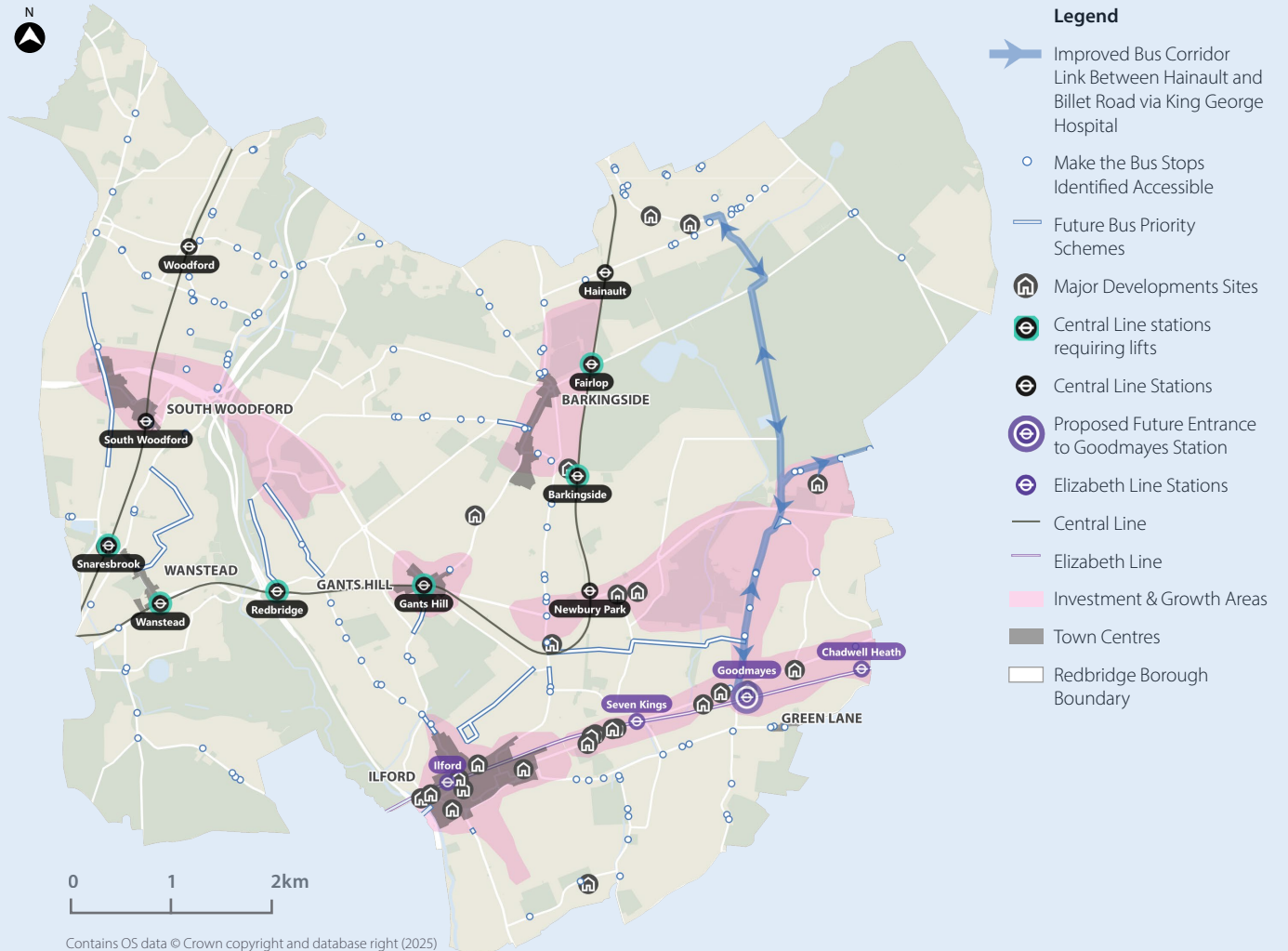
Targets

Improve the condition of footways

Introduce mobility hubs to provide sustainable choices

Reduce the number of stations without step-free access

Develop a decluttering programme for borough footways




Theme 3

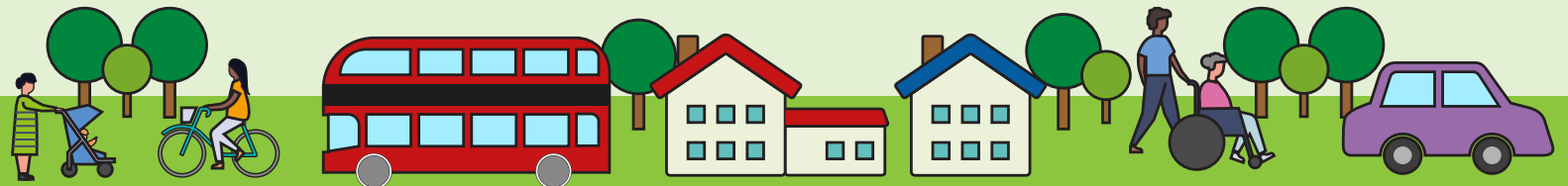
Enhancing the Environment and Responding to the Climate Emergency

Which priorities are important here? What are we going to do?

- 6 Enhancing the environment and biodiversity
- 7 Responding to the climate emergency

- Introduce community planting to improve biodiversity across Redbridge
- Manage biodiversity during construction of new highways schemes and transport infrastructure
- Reduce the negative impact of heavy traffic, vehicle emissions and noise on the environment
- Maintain our drainage systems to reduce the risk of flooding
- Plant new trees and sustainable drainage as part of new road safety, cycling schemes and improvement works
- Identify Council owned or unadopted spaces such as grass verges and former shrub beds that would benefit from community planting

- Introduce community planting, increase the planting of street trees, create parklets, and protect the greenbelt





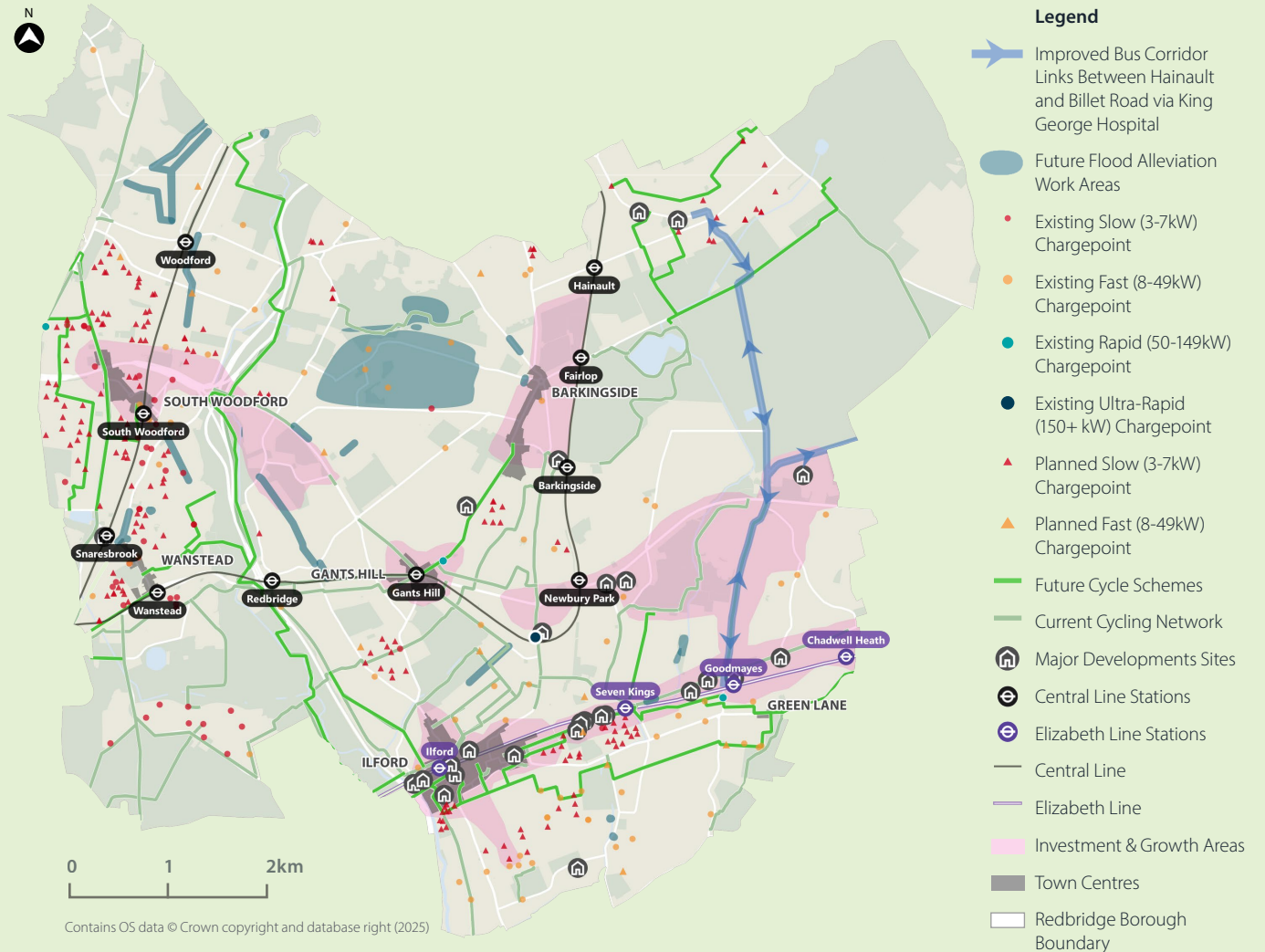
Key proposals across the Borough

Targets

Ensure new transport and infrastructure supports sustainable urban drainage

Ensure new transport and infrastructure supports a net increase in biodiversity

Improve access to publicly available electric vehicle charge points across the borough





Theme 4

Keeping Redbridge's Economy Moving

Which priorities are important here? What are we going to do?

- 8 Supporting housing, jobs and economic growth
- 9 Rethinking freight and servicing

- Ensure new developments adhere to cycle parking, car parking and electric vehicle charge point standards
- Ensure new developments promote sustainable travel options through travel plans
- Work with Transport for London and other boroughs to manage congestion on roads
- Ensure the Council's vehicles meet national safety standards
- Liaise with transport and logistics organisations to meet national safety standards
- Expand Controlled Parking Zones and on-street parking controls, particularly around car-free developments, to ensure that nearby streets are not affected by an increase in non-residential parking and to protect resident parking

- Ensure that future development proposals are accompanied by a Transport Assessment and compliant with London Plan policy requirements





Key proposals across the Borough

Targets

Increase the number of staff travelling to and from work by sustainable modes

Increase the share of zero emission Council vehicles

Identify and improve key accident locations for delivery vehicles

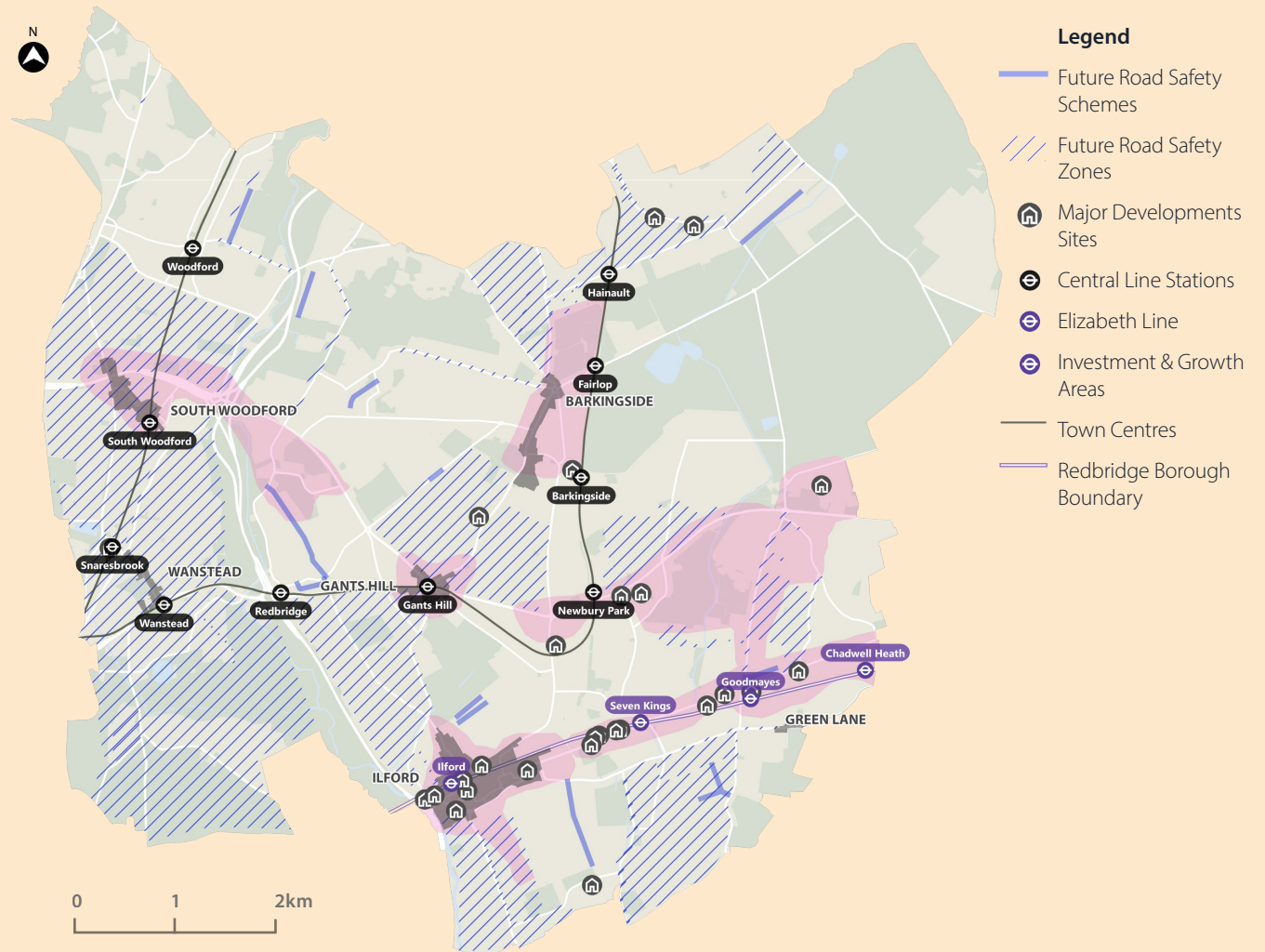
Increase the amount of parking for moped and motorbikes

Trial a last mile delivery hub by sustainable modes

Leverage new Department for Transport (DfT) legislation to rigorously enforce roadworks and actively collaborate with utility companies to better manage infrastructure

Reopen Broadmead Road Bridge, subject to options report recommendations

Work with residents to find solutions to excessive through traffic on residential streets



Contains OS data © Crown copyright and database right (2025)



Next steps



Monitoring

The Sustainable Transport Strategy will be refreshed every five years, with the first revision due in 2030. This is to keep the document current with wider policy or contextual changes. It will also give the Council an opportunity to reflect on progress made against targets, progress on the delivery of actions and review the allocation of funding.

To ensure that short-term and medium-term targets are being achieved, the Council will monitor the document annually. This will be in cooperation with Council departments, TfL, residents, businesses and schools.



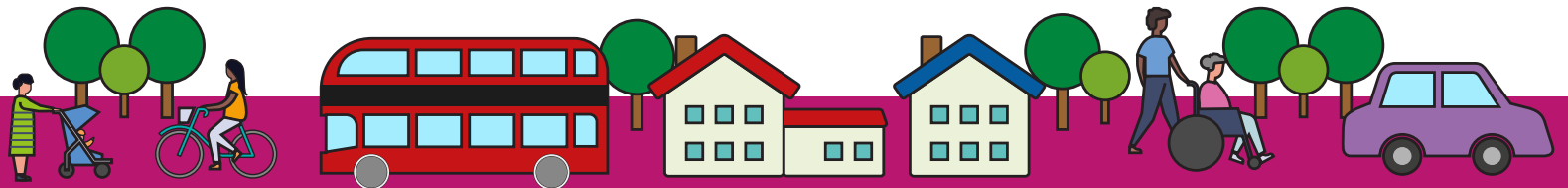
Funding

This strategy is aspirational and is dependent on funding. The Council will continually look for funding opportunities throughout the timeline of this strategy to support the delivery of the proposals within.



Documents

Copies of the Transport strategy and supporting documents consulted on are available online here - <https://www.redbridge.gov.uk/roads-and-pavements/sustainable-transport-strategy/>



Redbridge Sustainable Transport Strategy

London Borough of

Redbridge

