

Supporting local communities through tough times

Enforcement Hubs

Bringing Police and Council Enforcement Officers back into neighbourhoods. Our Enforcement Hubs deter criminals, help reduce crime and provide a base for extra patrols.

More Police and Enforcement patrols

We're working with the Police to increase patrols across the borough to keep our streets safe.



Weekly bin collections

Continuing weekly waste and recycling collections, bulky waste collections and free seasonal green garden waste collections.



Investing in parks

Keeping our parks clean and safe with Park Guard Officers, plus investing in playgrounds, outdoor gyms and upgrading park toilets.

Building affordable homes

We're on track to build 600 homes at affordable rents for local families.

Cost of Living support

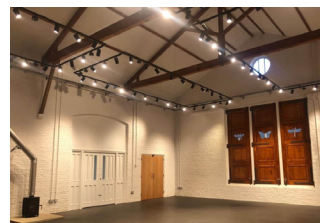
Our council is supporting local people through the rising cost of living with free school meals through the holidays, a network of warm spaces and help for low-income pensioners and struggling families.
<https://costofliving.redbridge.gov.uk>



Supporting schools



95% of Redbridge Schools are rated 'Good' or 'Outstanding' by Ofsted.



New gyms and upgraded libraries

Woodford and South Woodford are now home to renovated libraries and new gyms.



Wanstead Leisure Centre

Work is ongoing to deliver a new leisure centre and gym in Wanstead.



Hainault Forest Country Park

Renovation work is nearly complete with a new cafe and visitor centre opening in April, plus new trails and beautiful landscaping in the historic parkland. A brand new playground and upgraded farm are set to follow.

Fairlop Waters

Plans to double the size of Fairlop Waters are taking shape, with renovations underway creating new accessible pathways and installing new benches and improved signage.



Valentines Park Lido

Work has begun to identify a location and start the design process for the new outdoor swimming pool coming to Valentines Park.

Improving our town centre

Upgraded lighting, paving and landscaping has transformed Ilford and a new food market, Mercato, is set to open this summer.

Redbridge Council is rated among the most cost efficient local authorities in the country while remaining among the lowest funded per head in London.

This year a typical band D property will pay **20p** more per day to the Council, which will be invested in the following services:



£812.41

average government funding per head Redbridge

£994.72

average government funding per head London

If Redbridge received average funding per head we would have **£57m** more funding each year

General Council Tax

Band D property

2.99% increase

£43.90 per annum increase

Award winning services include:

Supporting local people through the rising cost of living

90,000 financial awards given to local people to help with food, energy and household bills

5,000 low-income pensioners helped with energy bills

£750k of unclaimed benefits put into local people's pockets

10,600 local children fed through the school holidays

HELPING YOU in tough times

New one stop shop for support <https://costofliving.redbridge.gov.uk>

95% Schools rated Good or Outstanding by Ofsted

Children's Services Rated Outstanding

Superb Library service, lending the most children's books in London

Boroughwide CCTV monitored 24/7

Weekly waste collection and bulky waste collection

£4.55m on road resurfacing, pavement repairs and highways maintenance

Nine Green Flag Parks

£141m invested in affordable council homes

Adult Social Care

Adult social care precept, introduced by the Government

2.00% increase

£29.36 per annum increase

Supporting local vulnerable adults and protecting the NHS:

- Services for older people
- Day Care Centres
- Mental Health Services
- Learning Disabilities Services
- Disability Equipment and Services
- Patient discharges from hospital

Rated as one of the best Adult Social Care services in the country



Greater London Authority

£434.14 band D amount

9.7% increase

£38.55 per annum increase

Straight to the Mayor of London (GLA) to pay for:



Transport for London



Policing and Crime



London Fire Brigade



Make time for things you like to do

Join **72,500** Redbridge households who have chosen
to pay their council tax by **Direct Debit**.

There is a choice of six instalment dates.



Visit our website to sign up
www.redbridge.gov.uk/council-tax





Make this your final paper Council Tax Bill

Join 27,000 Redbridge households who already receive an electronic council tax bill.

You can now manage your whole council tax account online too.

Once you have an account and completed the registration, you will be able to:

- View your council tax instalments and payments or print off a copy of your bill.
- Apply for discounts and exemptions, and council tax reduction;
- Notify us of a change of address or household.



Visit our website to sign up
www.redbridge.gov.uk/council-tax



“The thing I love most about fostering is seeing the progress children and young people make during the time they are with us. From surviving to thriving.”

Tracy

Redbridge Foster Carer

London Borough of

Redbridge



Change a child's future

Foster for Redbridge Council

We need local people who have a spare room (or space for a cot) who can offer a child a stable, nurturing and loving home.

Generous allowances, extensive support and training as well as a Council Tax discount of up to 80%

Contact us

Fostering Duty Team 020 8708 6068
fostering@redbridge.gov.uk

Or why not book onto our next information session by visiting our website
www.redbridge.gov.uk/fostering



You have the power to change a young person's life for the better.



Take the first step and call our friendly fostering team
today on: 020 8708 6068

fostering@redbridge.gov.uk
www.redbridge.gov.uk/fostering