

Supporting local communities through tough times

Enforcement Hubs

Bringing Police and Council Enforcement Officers back into neighbourhoods. Our Enforcement Hubs deter criminals, help reduce crime and provide a base for extra patrols.

More Police and Enforcement patrols

We're working with the Police to increase patrols across the borough to keep our streets safe.



Weekly bin collections

Continuing weekly waste and recycling collections, bulky waste collections and free seasonal green garden waste collections.



Investing in parks

Keeping our parks clean and safe with Park Guard Officers, plus investing in playgrounds, outdoor gyms and upgrading park toilets.

Building affordable homes

We're on track to build 600 homes at affordable rents for local families.

Cost of Living support

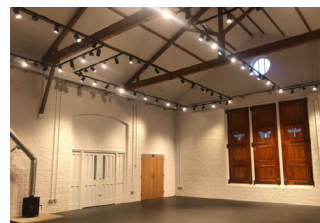
Our council is supporting local people through the rising cost of living with free school meals through the holidays, a network of warm spaces and help for low-income pensioners and struggling families.
<https://costofliving.redbridge.gov.uk/>



Supporting schools



95% of Redbridge Schools are rated 'Good' or 'Outstanding' by Ofsted.



New gyms and upgraded libraries

Woodford and South Woodford are now home to renovated libraries and new gyms.



Wanstead Leisure Centre

Work is ongoing to deliver a new leisure centre and gym in Wanstead.



Hainault Forest Country Park

Renovation work is nearly complete with a new cafe and visitor centre opening in April, plus new trails and beautiful landscaping in the historic parkland. A brand new playground and upgraded farm are set to follow.

Fairlop Waters

Plans to double the size of Fairlop Waters are taking shape, with renovations underway creating new accessible pathways and installing new benches and improved signage.



Valentines Park Lido

Work has begun to identify a location and start the design process for the new outdoor swimming pool coming to Valentines Park.

Improving our town centre

Upgraded lighting, paving and landscaping has transformed Ilford and a new food market, Mercato, is set to open this summer.

Redbridge Council is rated among the most cost efficient local authorities in the country while remaining among the lowest funded per head in London.

This year a typical band D property will pay **20p** more per day to the Council, which will be invested in the following services:



£812.41

average government funding per head Redbridge

£994.72

average government funding per head London

If Redbridge received average funding per head we would have **£57m** more funding each year

General Council Tax	Band D property	2.99% increase	£43.90 per annum increase
---------------------	-----------------	----------------	---------------------------

Award winning services include:

Supporting local people through the rising cost of living

90,000

financial awards given to local people to help with food, energy and household bills

5,000

low-income pensioners helped with energy bills

£750k

of unclaimed benefits put into local people's pockets

10,600

local children fed through the school holidays



New one stop shop for support <https://costofliving.redbridge.gov.uk>

95% Schools rated Good or Outstanding by Ofsted



Children's Services Rated Outstanding



Superb Library service, lending the most children's books in London



Boroughwide CCTV monitored 24/7



Weekly waste collection and bulky waste collection



£4.55m on road resurfacing, pavement repairs and highways maintenance



Nine Green Flag Parks

£141m invested in affordable council homes



Adult Social Care

Adult social care precept, introduced by the Government

2.00% increase

£29.36 per annum increase

Supporting local vulnerable adults and protecting the NHS:

- Services for older people
- Day Care Centres
- Mental Health Services
- Learning Disabilities Services
- Disability Equipment and Services
- Patient discharges from hospital

Rated as one of the best Adult Social Care services in the country



Greater London Authority

£434.14 band D amount

9.7% increase

£38.55 per annum increase

Straight to the Mayor of London (GLA) to pay for:



Transport for London



Policing and Crime



London Fire Brigade

