

THIS DRAWING MAY BE USED ONLY FOR
THE PURPOSE INTENDED

Legend

- LB Redbridge Administrative Boundary
- Culverted Watercourse
- Ordinary Watercourse
- Main River
- Permanent Water Bodies
- National Information - Historic Flood Map

National Information - Flood Event Outlines - Source:

- Main river
- Sea

Notes

London Borough of Redbridge



Preliminary Flood Risk Assessment

© Crown Copyright. All rights reserved. GLA (LA100032379) 2011
Covers all data that has been supplied and distributed under
license for the Drain London project.
Digital geological data reproduced from British Geological Survey
(c) NERC Licence No 2011/053A

Scale at A3	Date	Drawn by	Approved by
1:50,000	16/03/2011	N.Smith	P.Eccleston

Summary Map of Past Floods Main River / Fluvial / Tidal Incidents

Consultants



JACOBS

JACOBS UK Ltd.
Simpson House
6 Cherry Orchard Road
CROYDON
Surrey
CR9 6BE

Drain London Programme Board Members



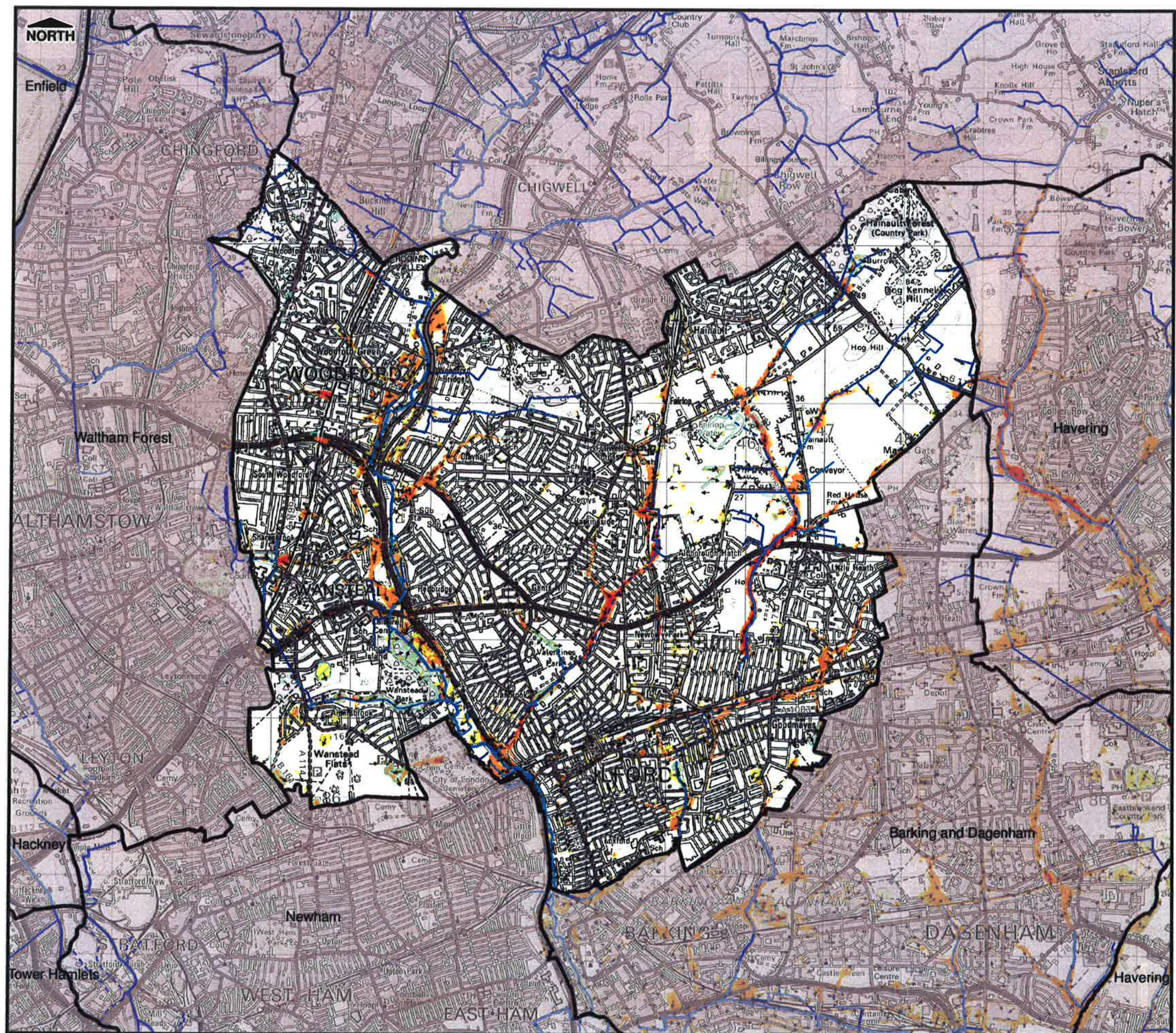
Environment
Agency



**LONDON
COUNCILS**

GREATERLONDONAUTHORITY

FIGURE 4.2



THIS DRAWING MAY BE USED ONLY FOR
THE PURPOSE INTENDED

Legend

- Culverted Watercourse
- Ordinary Watercourse
- Main River
- Permanent Water Bodies
- LB Redbridge Administrative Boundary
- Flow Direction

Flood hazard

- Caution (Very low hazard)
- Moderate (Danger for some)
- Significant (Danger for most)
- Extreme (Danger for all)

Notes

- This map only shows the predicted likelihood of surface water flooding (this includes flooding from sewers, drains, small watercourses and ditches that occurs in heavy rainfall) for defended areas, and due to the coarse nature of the source data used, are not detailed enough to account for precise addresses.
- Users of this map should refer to section 3.2 of the Surface Water Management Plan for a complete description of limitations and accuracy of the flood extents shown.

London Borough of Redbridge



Preliminary Flood Risk Assessment

© Crown Copyright. All rights reserved. GLA (LA100032379) 2011
Covers all data that has been supplied and distributed under
license for the Drain London project.
Digital geological data reproduced from British Geological Survey
(c) NERC Licence No 2011/053A

Scale at A3	Date	Drawn by	Approved by
1:50,000	17/03/2011	N.Smith	P.Eccleston

Water Flood Hazard Rating
**1 in 100 Chance of rainfall event occurring in any
given year plus an allowance for climate change**

Consultants



JACOBS

Jacobs UK Ltd.
Simpson House
6 Cherry Orchard Road
CROYDON
Surrey
CR9 6BE

Drain London Programme Board Members



GREATERLONDONAUTHORITY

FIGURE 5.6



THIS DRAWING MAY BE USED ONLY FOR
THE PURPOSE INTENDED

Legend

- LB Redbridge Administrative Boundary
- 1 in 30 year surface water depth > 0.1m
- 1 in 30 year surface water depth > 0.3m

Notes

London Borough of Redbridge



Surface Water Management Plan

© Crown Copyright. All rights reserved. GLA (LA100032379) 2011
Covers all data that has been supplied and distributed under
license for the Drain London project.
Digital geological data reproduced from British Geological Survey
(c) NERC Licence No 2011/053A

Scale at A3	Date	Drawn by	Approved by
1:50,000	21/02/2011	N.Smith	P.Eccleston

Environment Agency Flood Map for Surface Water 1 in 30 Chance of rainfall event occurring in any given year (3.33% AEP)

Consultants



JACOBS

Jacobs UK Ltd.
Simpson House
6 Cherry Orchard Road
CROYDON
Surrey
CR9 6BE

Drain London Programme Board Members

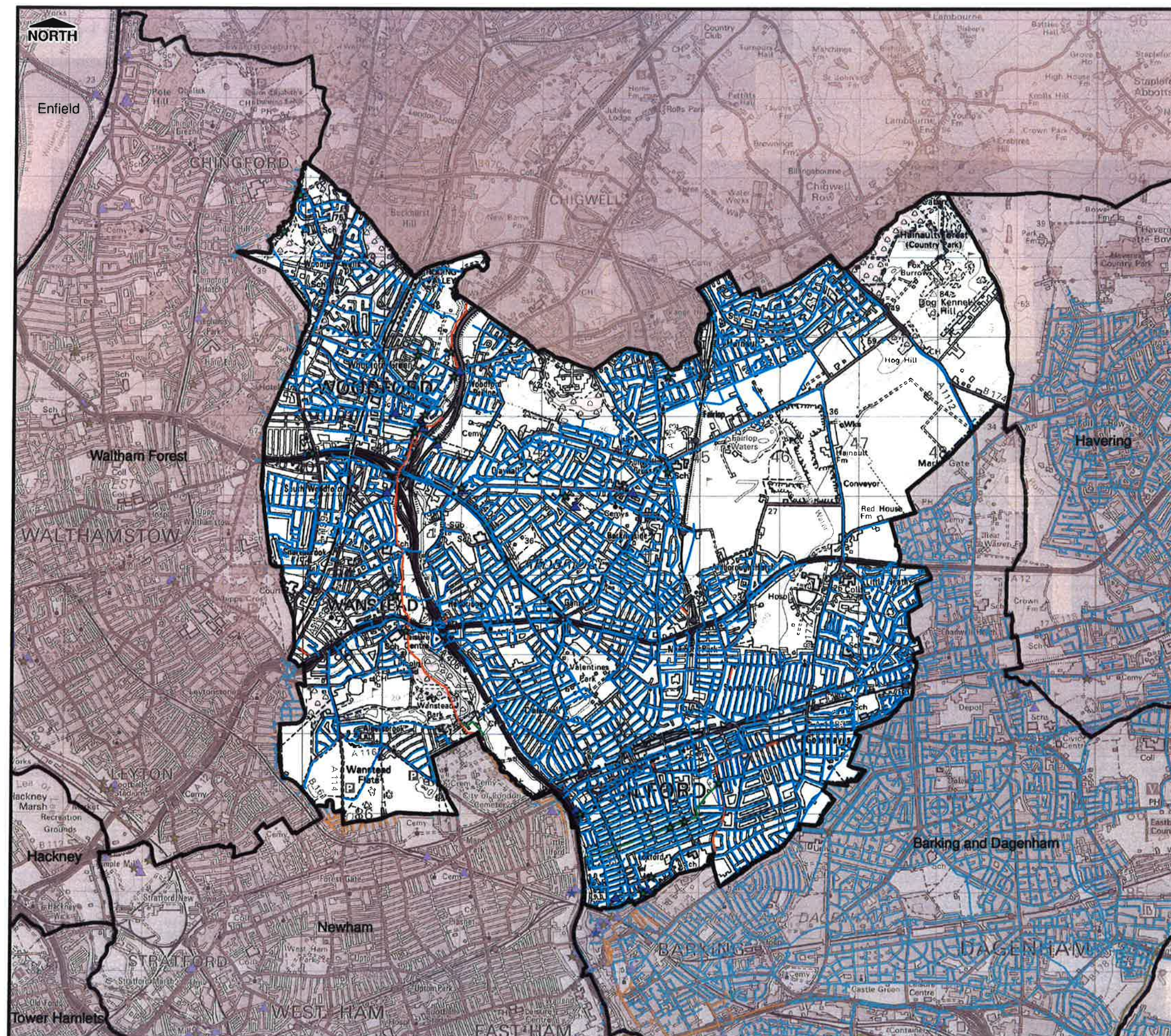


Environment
Agency



GREATER LONDON AUTHORITY

FIGURE D.1



THIS DRAWING MAY BE USED ONLY FOR
THE PURPOSE INTENDED

Legend

- LB Redbridge Administrative Boundary
- Pumping Stations
- Sewage Treatment Works
- Other Sewers
- Combined Sewer
- Surface Water Sewer
- Combined Sewer Overflow Locations - Other
- Combined Sewer Overflow Locations - Pumping Stations

Notes

1. Foul drainage network not displayed.
2. Drainage networks with a diameter less than or equal to 150mm not displayed.
3. The pipe network shown on this drawing is as supplied by Thames Water. Any queries relating to connectivity should be made directly to Thames Water.

London Borough of Redbridge



Surface Water Management Plan

© Crown Copyright. All rights reserved. GLA (LA100032379) 2011
Covers all data that has been supplied and distributed under
license for the Drain London project.
Digital geological data reproduced from British Geological Survey
(c) NERC Licence No 2011/053A

Scale at A3	Date	Drawn by	Approved by
1:50,000	14/03/2011	N.Smith	P.Eccleston

Thames Water Sewer Network

Consultants



JACOBS

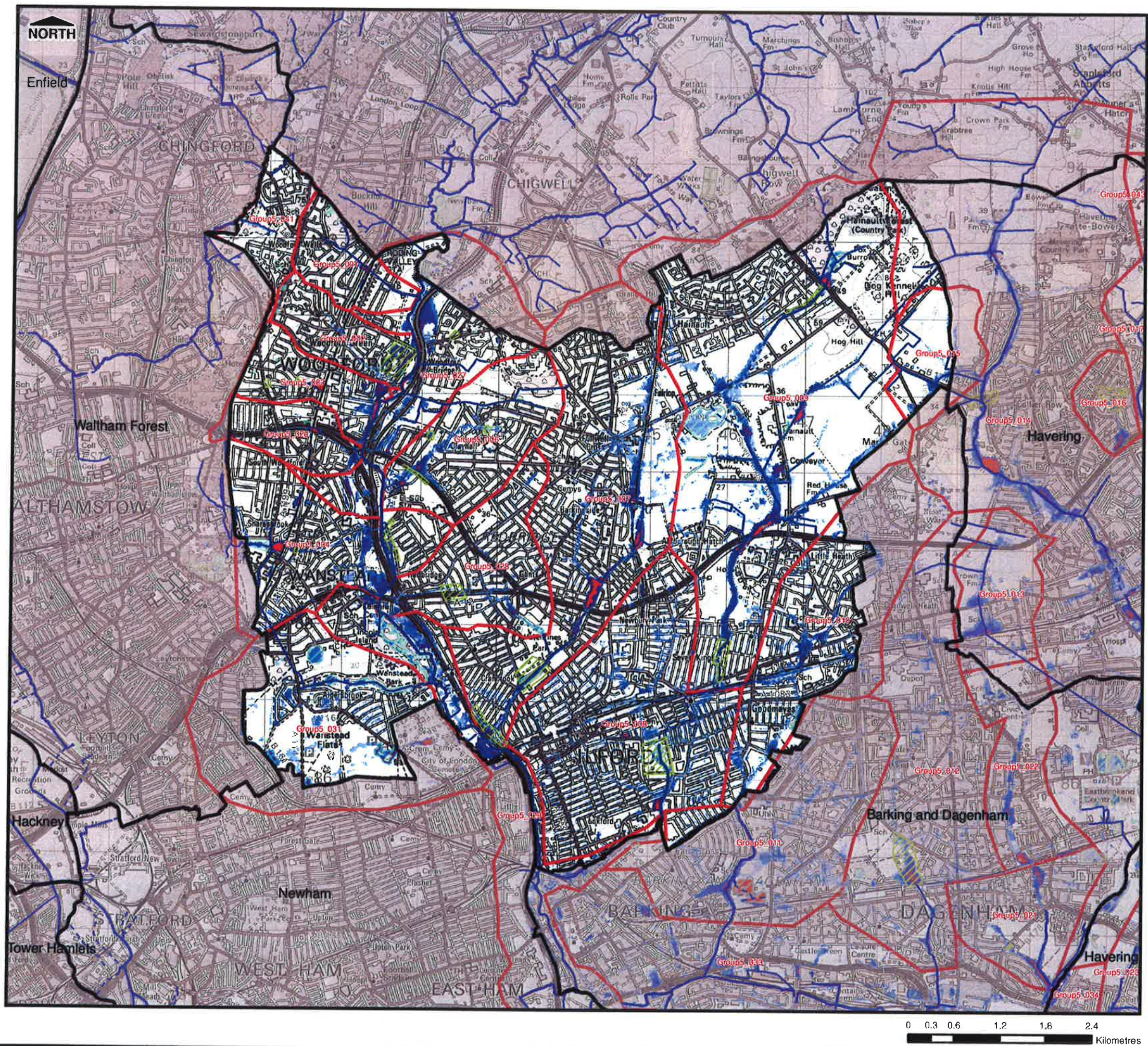
Jacobs UK Ltd.
Simpson House
6 Cherry Orchard Road
CROYDON
Surrey
CR9 6BE

Drain London Programme Board Members



GREATERLONDONAUTHORITY

FIGURE D.4



THIS DRAWING MAY BE USED ONLY FOR
THE PURPOSE INTENDED

Legend

- Culverted Watercourse
 - Ordinary Watercourse
 - Main River
 - Permanent Water Bodies
 - LB Redbridge Administrative Boundary
 - Surface Water Flood Outline - Local Information
 - Critical Drainage Area
- Flood depth
- <0.1m
 - 0.1m to 0.25m
 - 0.25m to 0.5m
 - 0.5m to 1.0m
 - 1.0m to 1.5m
 - >1.5m

Notes

1. This map only shows the predicted likelihood of surface water flooding (this includes flooding from sewers, drains, small watercourses and ditches that occurs in heavy rainfall) for defended areas, and due to the coarse nature of the source data used, are not detailed enough to account for precise addresses.
2. Users of this map should refer to section 3.2 of the Surface Water Management Plan for a complete description of limitations and accuracy of the flood extents shown.

London Borough of Redbridge



Surface Water Management Plan

© Crown Copyright. All rights reserved. GLA (LA100032379) 2011
Covers all data that has been supplied and distributed under
license for the Drain London project.
Digital geological data reproduced from British Geological Survey
(c) NERC Licence No 2011/053A

Scale at A3	Date	Drawn by	Approved by
1:50,000	14/03/2011	N.Smith	P.Eccleston

**1 in 100 year rainfall event depth grid + Recorded
Surface Water Flood Incidents
1 in 100 Chance of rainfall event occurring
in any given year (1% AEP)**

Consultants



JACOBS

Jacobs UK Ltd,
Simpson House
6 Cherry Orchard Road
CROYDON
Surrey
CR9 6BE

Drain London Programme Board Members



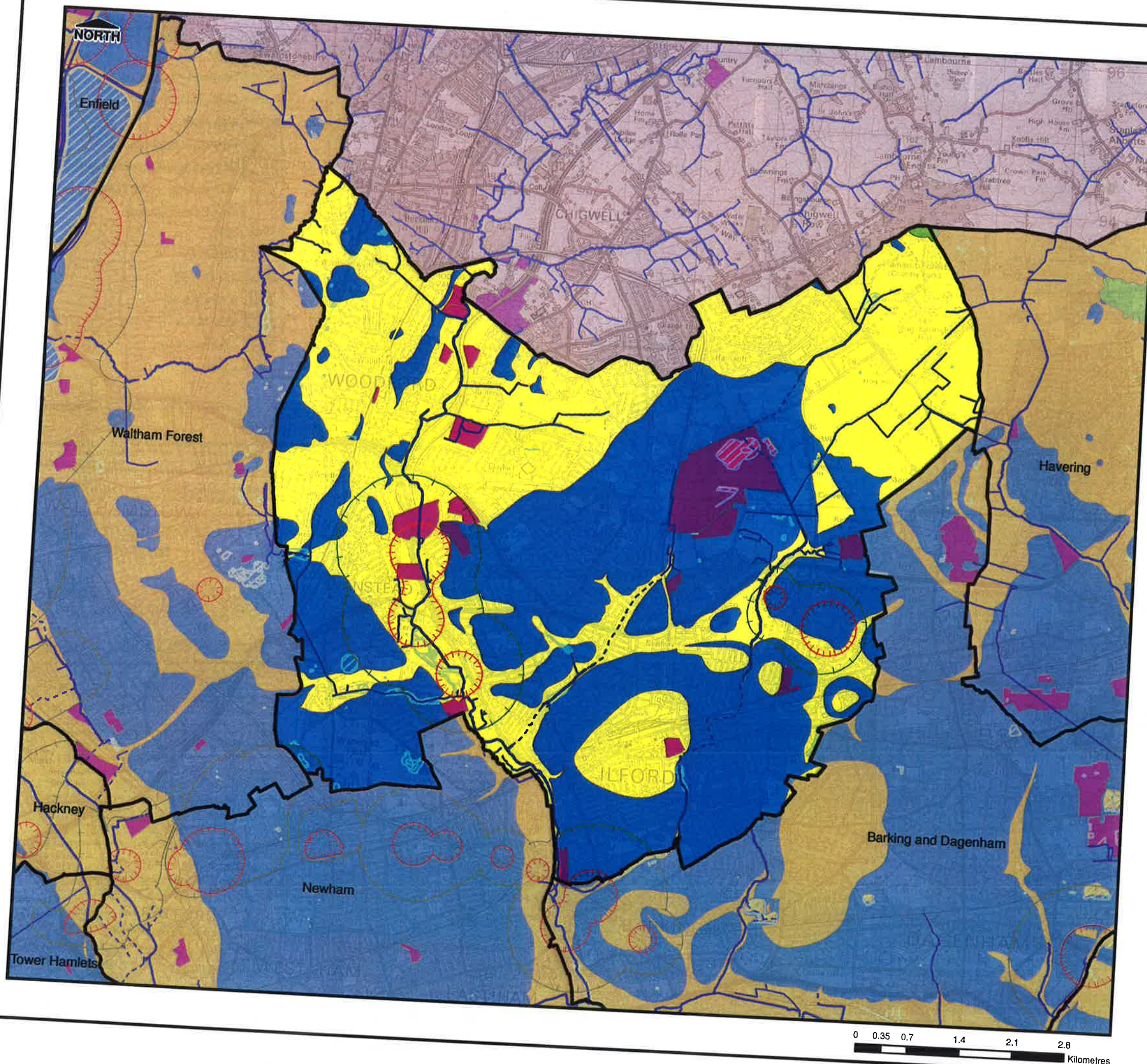
**Environment
Agency**



GREATERLONDONAUTHORITY

FIGURE D.3

Filepath: N:\2010\Projects\2010s4514 - Jacobs UK Ltd - Drain London Tier 2 Group 5\Graphical Data\ArcGIS\Templates\Revised\SWMP - Infiltration_SUDS_Suitability_Redbridge.mxd



THIS DRAWING MAY BE USED ONLY FOR THE PURPOSE INTENDED

Legend

- LB Redbridge Administrative Boundary
- Culverted Watercourse
- Ordinary Watercourse
- Main River
- Permanent Water Bodies
- EA Groundwater Source Protection Zone
- Inner Zone
- Outer Zone
- Historic Landfill Site
- Infiltration SUDS Potentially Suitable
- Infiltration SUDS Potentially Unsuitable
- Infiltration SUDS Suitability Uncertain - Site Investigation Required

Notes

London Borough of Redbridge



Surface Water Management Plan

© Crown Copyright. All rights reserved. GLA (LA100032379) 2011
Covers all data that has been supplied and distributed under license for the Drain London project.
Digital geological data reproduced from British Geological Survey
(c) NERC Licence No 2011/053A

Scale at A3 1:50,000	Date 14/03/2011	Drawn by N.Smith	Approved by P.Eccleston
-------------------------	--------------------	---------------------	----------------------------

Infiltration SUDS Suitability Map

Consultants



JACOBS

Jacobs UK Ltd.
Simpson House
6 Cherry Orchard Road
CROYDON
Surrey
CR9 6BE

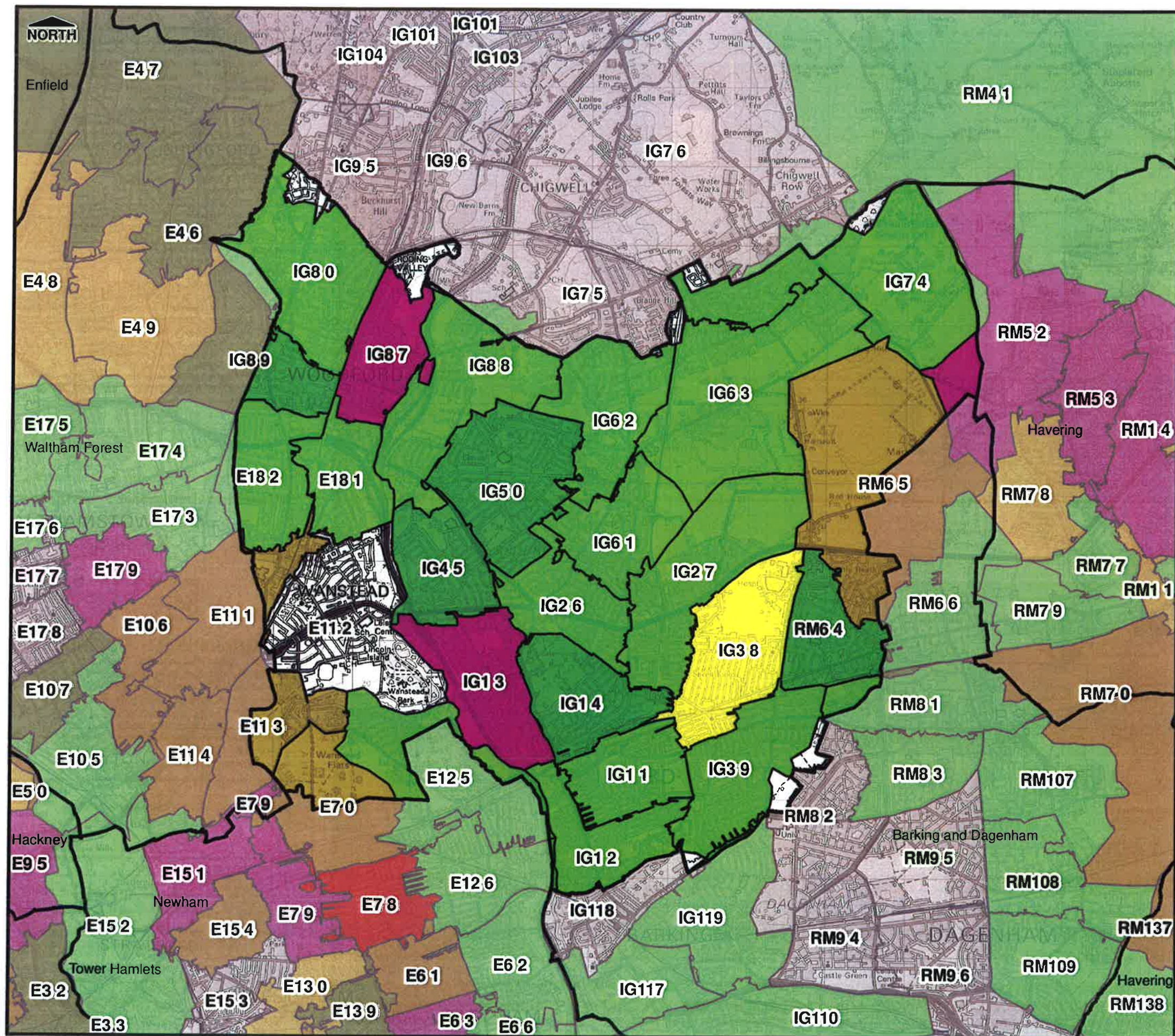
Drain London Programme Board Members



GREATERLONDONAUTHORITY

FIGURE D.6

Filepath: N:\2010\Projects\2010s\4514 - Jacobs UK Ltd - Drain London Tier 2 Group S:\Graphical Data\ArcGIS\Templates\Revised Templates\SWMP_Sewer_Flooding_Incidents_Redbridge.mxd



THIS DRAWING MAY BE USED ONLY FOR
THE PURPOSE INTENDED

Legend

LB Redbridge Administrative Boundary

No. of Sewer Flood Records by Postcode Sector

None

1 - 5

6 - 10

11 - 20

21 - 50

51 - 100

101+

Notes

1. Sewer flood records relate to internal and external flooding of properties
2. Data supplied by Thames Water Ltd and is correct as at June 2010

London Borough of Redbridge



Surface Water Management Plan

© Crown Copyright. All rights reserved. GLA (LA100032379) 2011
Covers all data that has been supplied and distributed under
license for the Drain London project.
Digital geological data reproduced from British Geological Survey
(c) NERC Licence No 2011/053A

Scale at A3
1:50,000

Date
06/04/2011

Drawn by
N.Smith

Approved by
P.Eccleston

Recorded Incidents of Sewer Flooding

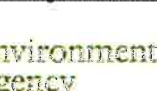
Consultants



JACOBS

JACOBS UK Ltd.
Simpson House
6 Cherry Orchard Road
CROYDON
Surrey
CR9 6BE

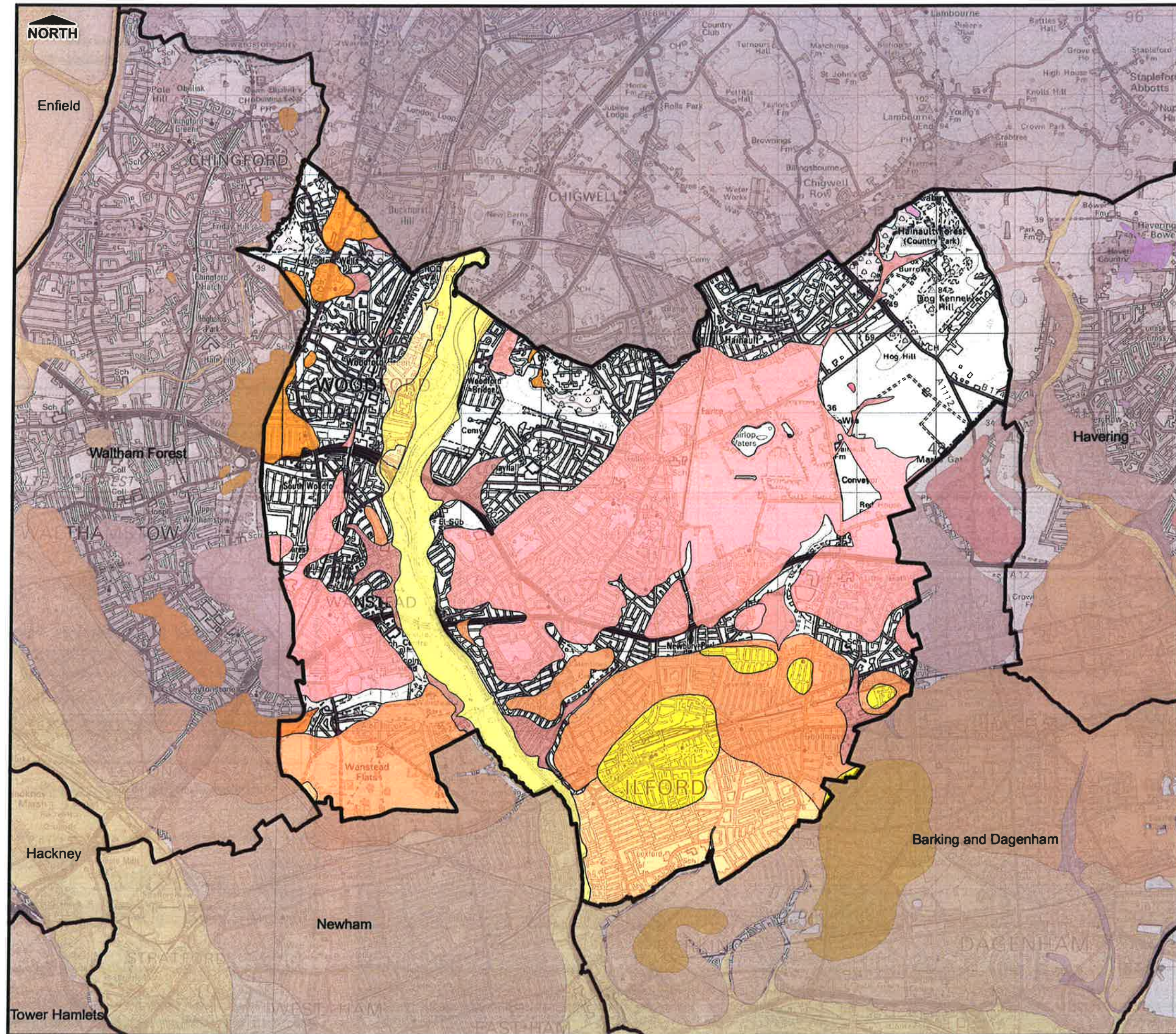
Drain London Programme Board Members



GREATER LONDON AUTHORITY

FIGURE D.5

Filepath: N:\2010\Projects\2010s4514 - Jacobs UK Ltd - Drain London Tier 2 Group 5\Graphical Data\ArcGIS\Templates\Revised Templates\SWMP Superficial Geology Redbridge.mxd



THIS DRAWING MAY BE USED ONLY FOR THE PURPOSE INTENDED

- LB Redbridge
- Alluvium - Silty Peaty Sandy Clay
- Alluvium - Clay, Silt, Sand and Gravel
- Boyn Hill Gravel Member - Sand and Gravel
- Black Park Gravel Member - Sand and Gravel
- Crayford Silt Member - Clay and Silt
- Chelsfield Gravel Formation - Sand and Gravel
- Clay-With-Flints Formation - Clay, Silt, Sand and Gravel
- Dollis Hill Gravel Member - Sand and Gravel
- Enfield Silt Member - Clay and Silt
- Finsbury Gravel Member - Sand and Gravel
- Gerrards Cross Gravel Formation - Sand and Gravel
- Glaciofluvial Deposits, Mid Pleistocene - Sand and Gravel
- Glaciolacustrine Deposits, Mid Pleistocene - Clay, Silt and Sand
- Hackney Gravel Member - Sand and Gravel
- Head - Clay and Silt
- Head - Clay, Silt, Sand and Gravel
- Head - Gravel, Sand, Silt and Clay
- Interglacial Lacustrine Deposits - Clay and Silt
- Ilford Silt Member - Clay and Silt
- Kempton Park Gravel Formation - Sand and Gravel
- Langley Silt Member - Clay and Silt
- Lynch Hill Gravel Member - Sand and Gravel
- Lowestoft Formation - Diamicton
- Peat - Peat
- Roding Silt Member - Clay and Silt
- River Terrace Deposits (Undifferentiated) - Sand and Gravel
- Sand and Gravel Of Uncertain Age and Origin - Sand and Gravel
- Shepperton Gravel Member - Sand and Gravel
- Stanmore Gravel Formation - Sand and Gravel
- Taplow Gravel Formation - Sand and Gravel
- Tidal River Or Creek Deposits - Clay and Silt
- Winter Hill Gravel - Sand and Gravel
- Woodford Gravel Formation - Sand and Gravel

Notes

London Borough of Redbridge

London Borough of **Redbridge**

Surface Water Management Plan

© Crown Copyright. All rights reserved. GLA (LA100032379) 2011
Covers all data that has been supplied and distributed under license for the Drain London project.
Digital geological data reproduced from British Geological Survey
(c) NERC Licence No 2011/053A

Scale at A3 1:50,000	Date 23/02/2011	Drawn by N.Smith	Approved by P.Eccleston
-------------------------	--------------------	---------------------	----------------------------

Geological Map Superficial

Consultants

Jacobs UK Ltd,
Simpson House
6 Cherry Orchard Road
CROYDON
Surrey
CR9 6BE

Drain London Programme Board Members

GREATERLONDONAUTHORITY

FIGURE D.8



THIS DRAWING MAY BE USED ONLY FOR
THE PURPOSE INTENDED

Legend

- LB Redbridge Administrative Boundary
- Bagshot Formation - Sand
- Claygate Member - Clay, Silt And Sand
- Claygate Member - Sand, Silt And Clay
- Holywell / New Pit (Undifferentiated) - Chalk
- Harwich Formation - Sand And Gravel
- Harwich Formation - Sand And Gravel
- London Clay Formation - Clay, Silt And Sand
- Lewes Nodular Chalk Formation - Chalk
- Lambeth Group - Clay, Silt And Sand
- Lambeth Group - Sand, Silt And Clay
- Lewes / Seaford / Newhaven (Undifferentiated) - Chalk
- New Pit Chalk Formation - Chalk
- Seaford / Newhaven (Undifferentiated) - Chalk
- Thanet Sand Formation - Sand

Notes

London Borough of Redbridge



Surface Water Management Plan

© Crown Copyright. All rights reserved. GLA (LA100032379) 2011
Covers all data that has been supplied and distributed under
license for the Drain London project.
Digital geological data reproduced from British Geological Survey
(c) NERC Licence No 2011/053A

Scale at A3	Date	Drawn by	Approved by
1:50,000	23/02/2011	N.Smith	P.Eccleston

Geological Map Bedrock

Consultants



JACOBS

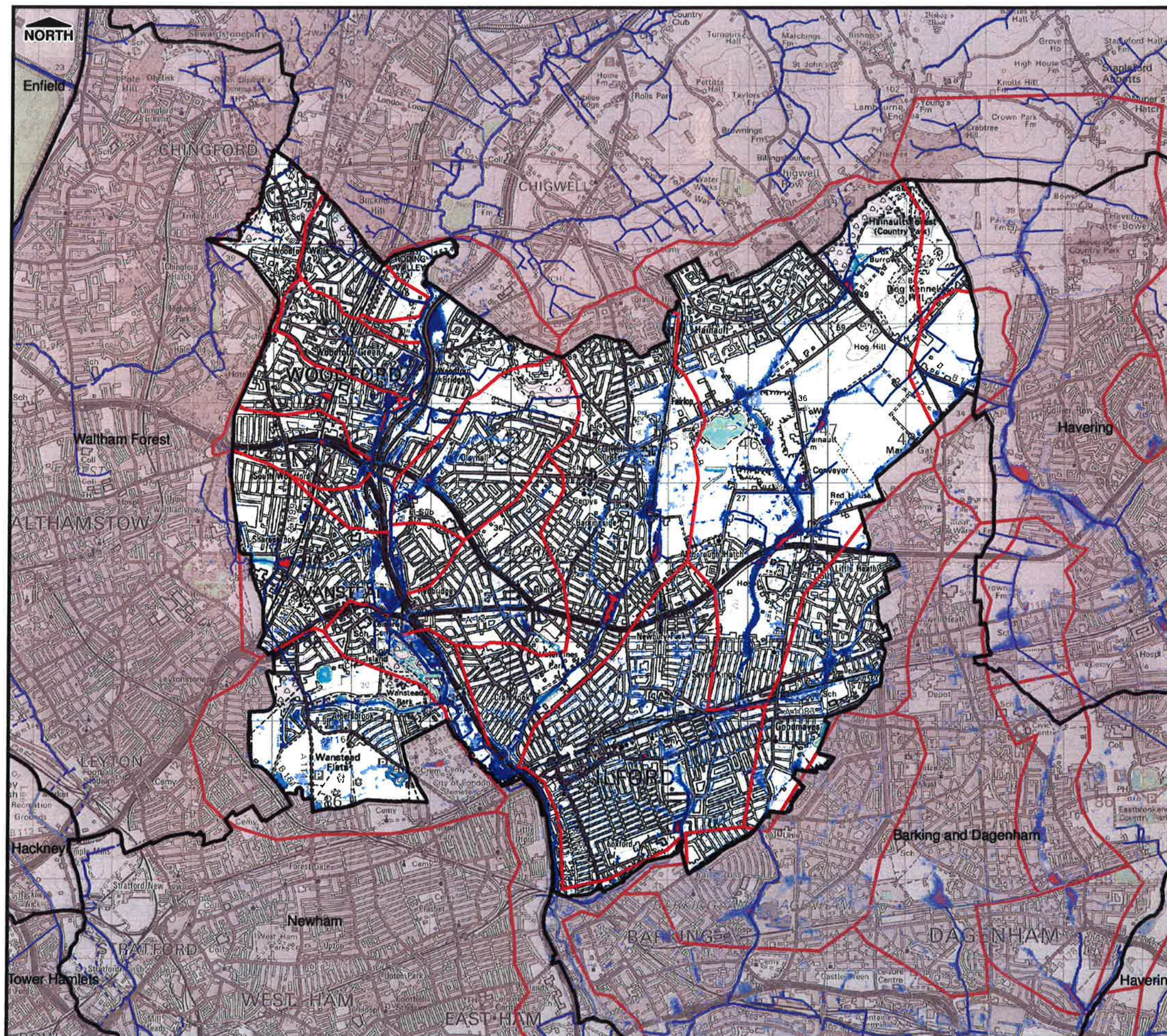
Jacobs UK Ltd.
Simpson House
6 Cherry Orchard Road
CROYDON
Surrey
CR9 6BE

Drain London Programme Board Members



GREATERLONDONAUTHORITY

FIGURE D.7



THIS DRAWING MAY BE USED ONLY FOR
THE PURPOSE INTENDED

Legend

- Culverted Watercourse
- Ordinary Watercourse
- Main River
- Permanent Water Bodies
- LB Redbridge Administrative Boundary
- Critical Drainage Area
- Flood depth**
 - <0.1m
 - 0.1m to 0.25m
 - 0.25m to 0.5m
 - 0.5m to 1.0m
 - 1.0m to 1.5m
 - >1.5m

Notes

1. This map only shows the predicted likelihood of surface water flooding (this includes flooding from sewers, drains, small watercourses and ditches that occurs in heavy rainfall) for defended areas, and due to the coarse nature of the source data used, are not detailed enough to account for precise addresses.
2. Users of this map should refer to section 3.2 of the Surface Water Management Plan for a complete description of limitations and accuracy of the flood extents shown.

London Borough of Redbridge



Surface Water Management Plan

© Crown Copyright. All rights reserved. GLA (LA100032379) 2011
Covers all data that has been supplied and distributed under
license for the Drain London project.
Digital geological data reproduced from British Geological Survey
(c) NERC Licence No 2011/053A

Scale at A3	Date	Drawn by	Approved by
1:50,000	02/03/2011	N.Smith	P.Eccleston

Surface Water Depth (m)
1 in 75 Chance of rainfall event occurring
in any given year (1.33% AEP)

Consultants



JACOBS

JACOBS UK Ltd.
Simpson House
6 Cherry Orchard Road
CROYDON
Surrey
CR9 6BE

Drain London Programme Board Members



**Environment
Agency**



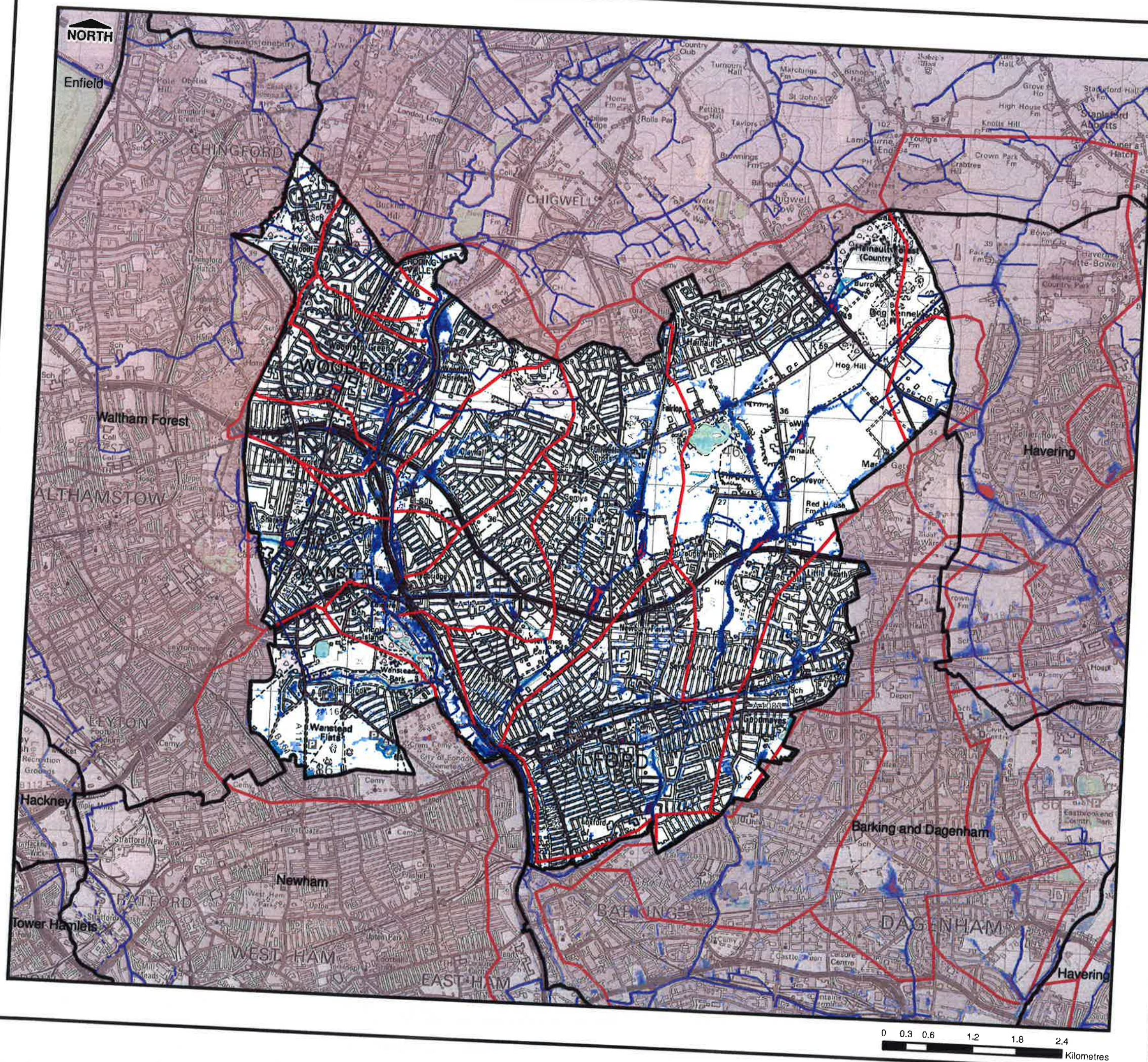
**LONDON
COUNCILS**

GREATER LONDON AUTHORITY

FIGURE D.10

0 0.3 0.6 1.2 1.8 2.4
Kilometres

Filepath: N:\2010\Projects\2010\4514 - Jacobs UK Ltd - Drain London - Tier 2\GIS\Geographical Data\ArcGIS\Templates\Revised Templates\SWMP 30v Depth Map Redbridge.mxd



THIS DRAWING MAY BE USED ONLY FOR
THE PURPOSE INTENDED

Legend

- Culverted Watercourse
- Ordinary Watercourse
- Main River
- Permanent Water Bodies
- LB Redbridge Administrative Boundary
- Critical Drainage Area
- Flood depth
 - <0.1m
 - 0.1m to 0.25m
 - 0.25m to 0.5m
 - 0.5m to 1.0m
 - 1.0m to 1.5m
 - >1.5m

Notes

1. This map only shows the predicted likelihood of surface water flooding (this includes flooding from sewers, drains, small watercourses and ditches that occurs in heavy rainfall) for defended areas, and due to the coarse nature of the source data used, are not detailed enough to account for precise addresses.
2. Users of this map should refer to section 3.2 of the Surface Water Management Plan for a complete description of limitations and accuracy of the flood extents shown.

London Borough of Redbridge



Surface Water Management Plan

© Crown Copyright. All rights reserved. GLA (LA100032379) 2011
Covers all data that has been supplied and distributed under
license for the Drain London project.
Digital geological data reproduced from British Geological Survey
(c) NERC Licence No 2011/053A

Scale at A3
1:50,000

Date
02/03/2011

Drawn by
N.Smith

Approved by
P.Eccleston

Surface Water Depth (m)
1 in 30 Chance of rainfall event occurring
in any given year (3.33% AEP)

Consultants



JACOBS

JACOBS UK Ltd.
Simpson House
6 Cherry Orchard Road
CROYDON
Surrey
CR9 6BE

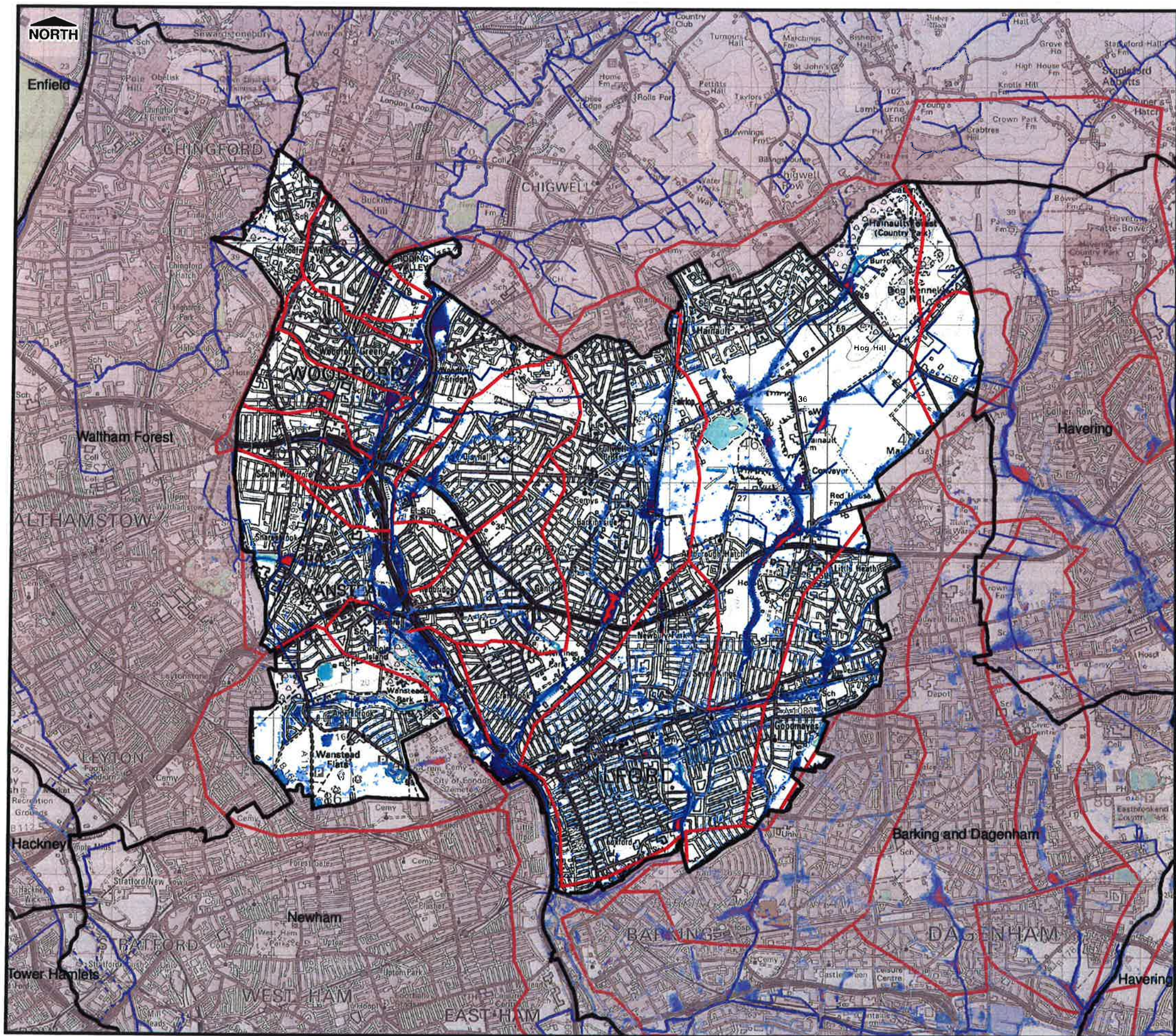
Drain London Programme Board Members



GREATER LONDON AUTHORITY

FIGURE D.9

Filepath: \\2010\Projects\2010\4514 - Drain London\Twr 2\Group 5\Geographical Data\GIS\Transmitted\Revised\Imagery\SWMP 2010\Depth Map Redbridge.mxd



THIS DRAWING MAY BE USED ONLY FOR THE PURPOSE INTENDED

Legend

- Culverted Watercourse
- Ordinary Watercourse
- Main River
- Permanent Water Bodies
- LB Redbridge Administrative Boundary
- Critical Drainage Area
- Flood depth
 - <0.1m
 - 0.1m to 0.25m
 - 0.25m to 0.5m
 - 0.5m to 1.0m
 - 1.0m to 1.5m
 - >1.5m

Notes

- This map only shows the predicted likelihood of surface water flooding (this includes flooding from sewers, drains, small watercourses and ditches that occurs in heavy rainfall) for defended areas, and due to the coarse nature of the source data used, are not detailed enough to account for precise addresses.
- Users of this map should refer to section 3.2 of the Surface Water Management Plan for a complete description of limitations and accuracy of the flood extents shown.

London Borough of Redbridge



Surface Water Management Plan

© Crown Copyright. All rights reserved. GLA (LA100032379) 2011
Covers all data that has been supplied and distributed under license for the Drain London project.
Digital geological data reproduced from British Geological Survey (c) NERC Licence No 2011/053A

Scale at A3	Date	Drawn by	Approved by
1:50,000	02/03/2011	N.Smith	P.Eccleston

Surface Water Depth (m)
1 in 200 Chance of rainfall event occurring
in any given year (0.5% AEP)

Consultants



Jacobs UK Ltd.
Simpson House
6 Cherry Orchard Road
CROYDON
Surrey
CR9 6BE

Drain London Programme Board Members

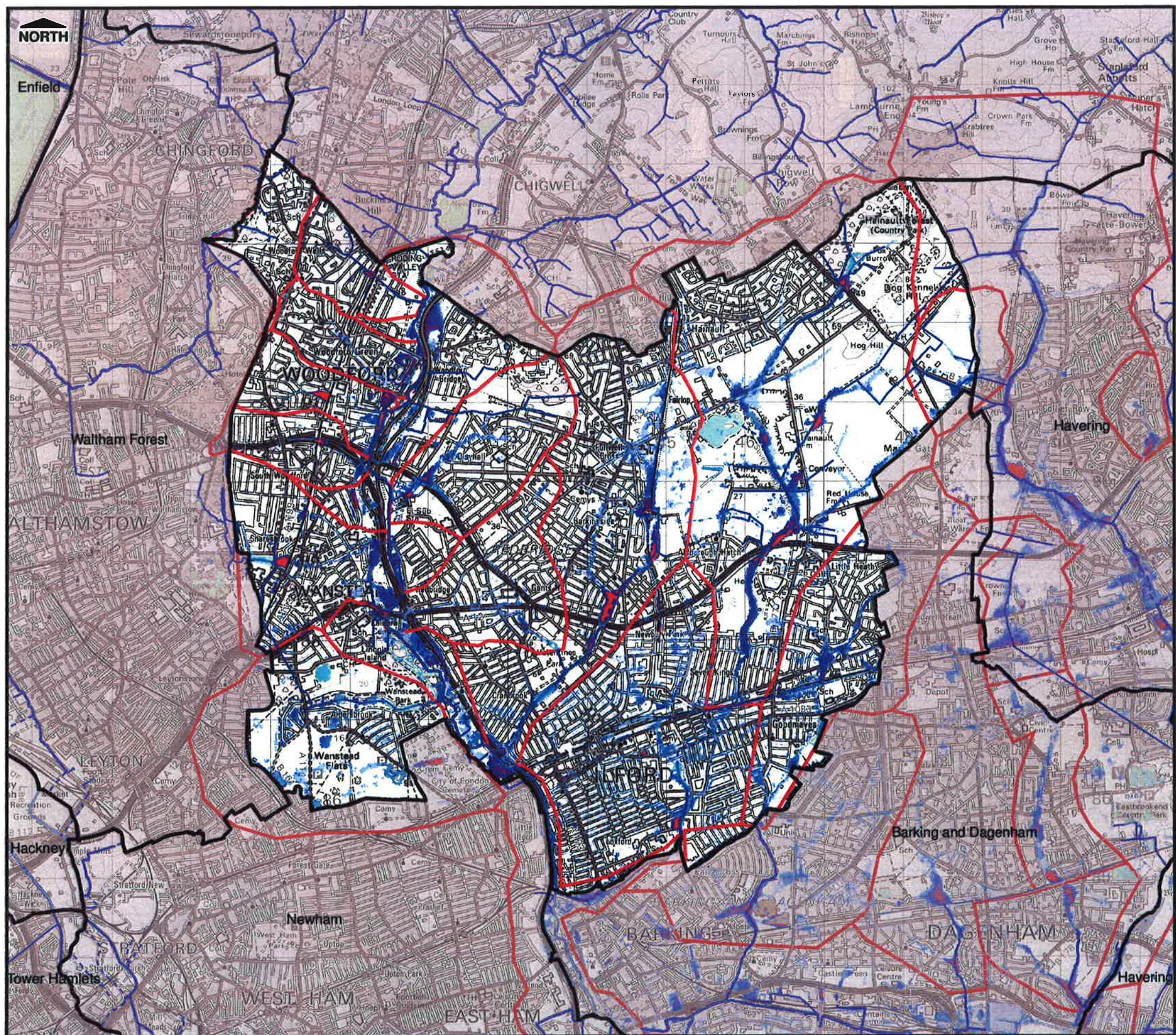


GREATERLONDONAUTHORITY

FIGURE D.12



Filepath: \\2010\Projects\2011\04514 - Jacobs UK Ltd - Drain London Tier 2 Group 5\Graphical Data\ArcGIS\Templates\Revised Templates\SWMP_100\swmp_depth_map_redbridge.mxd



THIS DRAWING MAY BE USED ONLY FOR
THE PURPOSE INTENDED

Legend

- Culverted Watercourse
- Ordinary Watercourse
- Main River
- Permanent Water Bodies
- LB Redbridge Administrative Boundary
- Critical Drainage Area

Flood depth

- <0.1m
- 0.1m to 0.25m
- 0.25m to 0.5m
- 0.5m to 1.0m
- 1.0m to 1.5m
- >1.5m

Notes

- This map only shows the predicted likelihood of surface water flooding (this includes flooding from sewers, drains, small watercourses and ditches that occurs in heavy rainfall) for defended areas, and due to the coarse nature of the source data used, are not detailed enough to account for precise addresses.
- Users of this map should refer to section 3.2 of the Surface Water Management Plan for a complete description of limitations and accuracy of the flood extents shown.

London Borough of Redbridge



Surface Water Management Plan

© Crown Copyright. All rights reserved. GLA (LA100032379) 2011
Covers all data that has been supplied and distributed under
license for the Drain London project.
Digital geological data reproduced from British Geological Survey
(c) NERC Licence No 2011/053A

Scale at A3	Date	Drawn by	Approved by
1:50,000	02/03/2011	N.Smith	P.Eccleston

Surface Water Depth (m)
**1 in 100 Chance of rainfall event occurring in any
given year plus an allowance for climate change**

Consultants



JACOBS

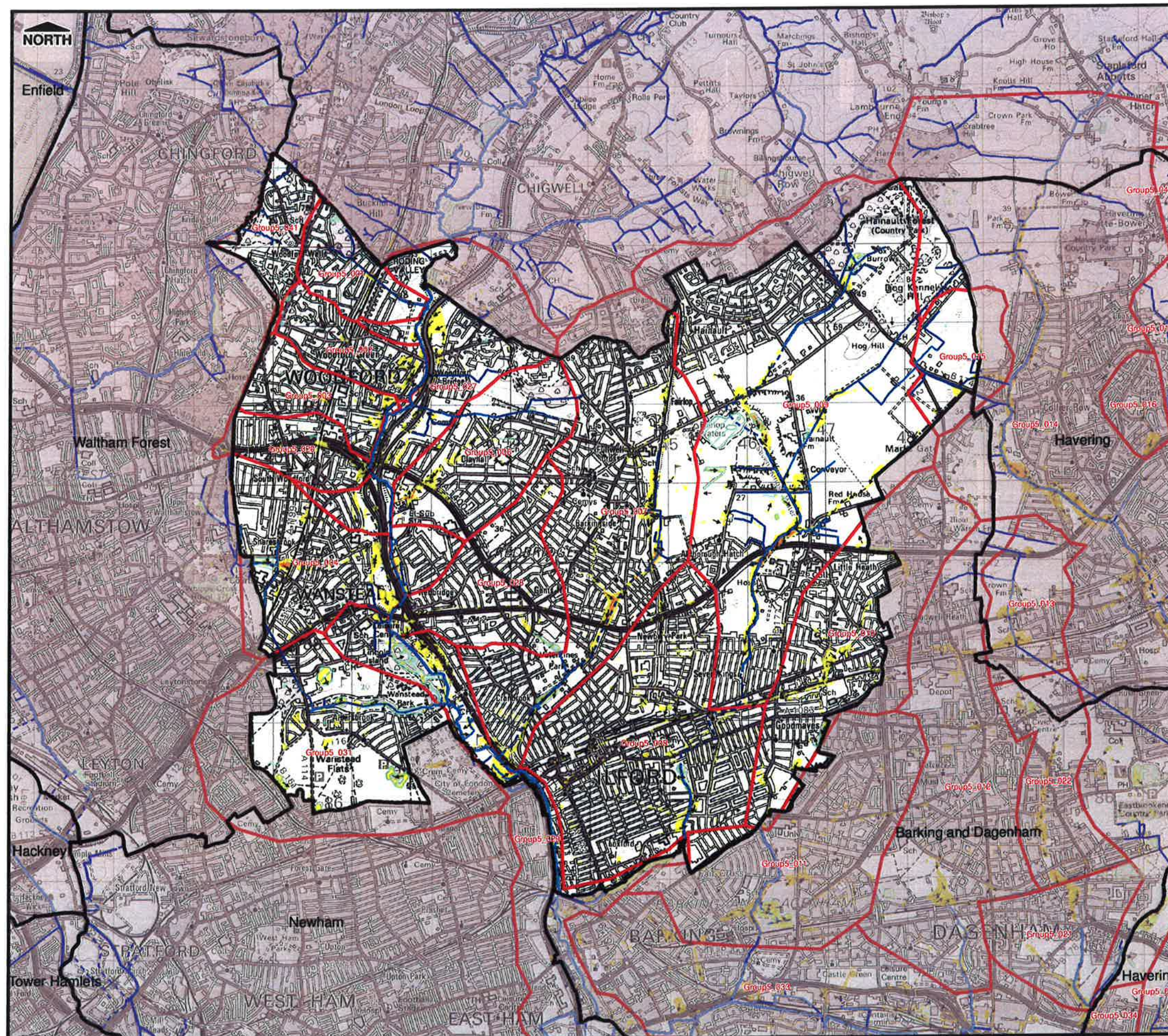
JACOBS UK Ltd.
Simpson House
6 Cherry Orchard Road
CROYDON
Surrey
CR9 6BE

Drain London Programme Board Members



GREATERLONDONAUTHORITY

FIGURE D.11



THIS DRAWING MAY BE USED ONLY FOR
THE PURPOSE INTENDED

Legend

- Culverted Watercourse
- Ordinary Watercourse
- Main River
- Permanent Water Bodies
- LB Redbridge Administrative Boundary
- Critical Drainage Area
- Flow Direction

Hazard

- Caution (Very low hazard)
- Moderate (Danger for some)
- Significant (Danger for most)
- Extreme (Danger for all)

Notes

- This map only shows the predicted likelihood of surface water flooding (this includes flooding from sewers, drains, small watercourses and ditches that occurs in heavy rainfall) for defended areas, and due to the coarse nature of the source data used, are not detailed enough to account for precise addresses.
- Users of this map should refer to section 3.2 of the Surface Water Management Plan for a complete description of limitations and accuracy of the flood extents shown.

London Borough of Redbridge



Surface Water Management Plan

© Crown Copyright. All rights reserved. GLA (LA100032379) 2011
Covers all data that has been supplied and distributed under
license for the Drain London project.
Digital geological data reproduced from British Geological Survey
(c) NERC Licence No 2011/053A

Scale at A3	Date	Drawn by	Approved by
1:50,000	23/03/2011	N.Smith	P.Eccleston

Surface Water Flood Hazard Rating
1 in 75 Chance of rainfall event occurring
in any given year (1.33% AEP)

Consultants



JACOBS

Jacobs UK Ltd.
Simpson House
6 Cherry Orchard Road
CROYDON
Surrey
CR9 6BE

Drain London Programme Board Members



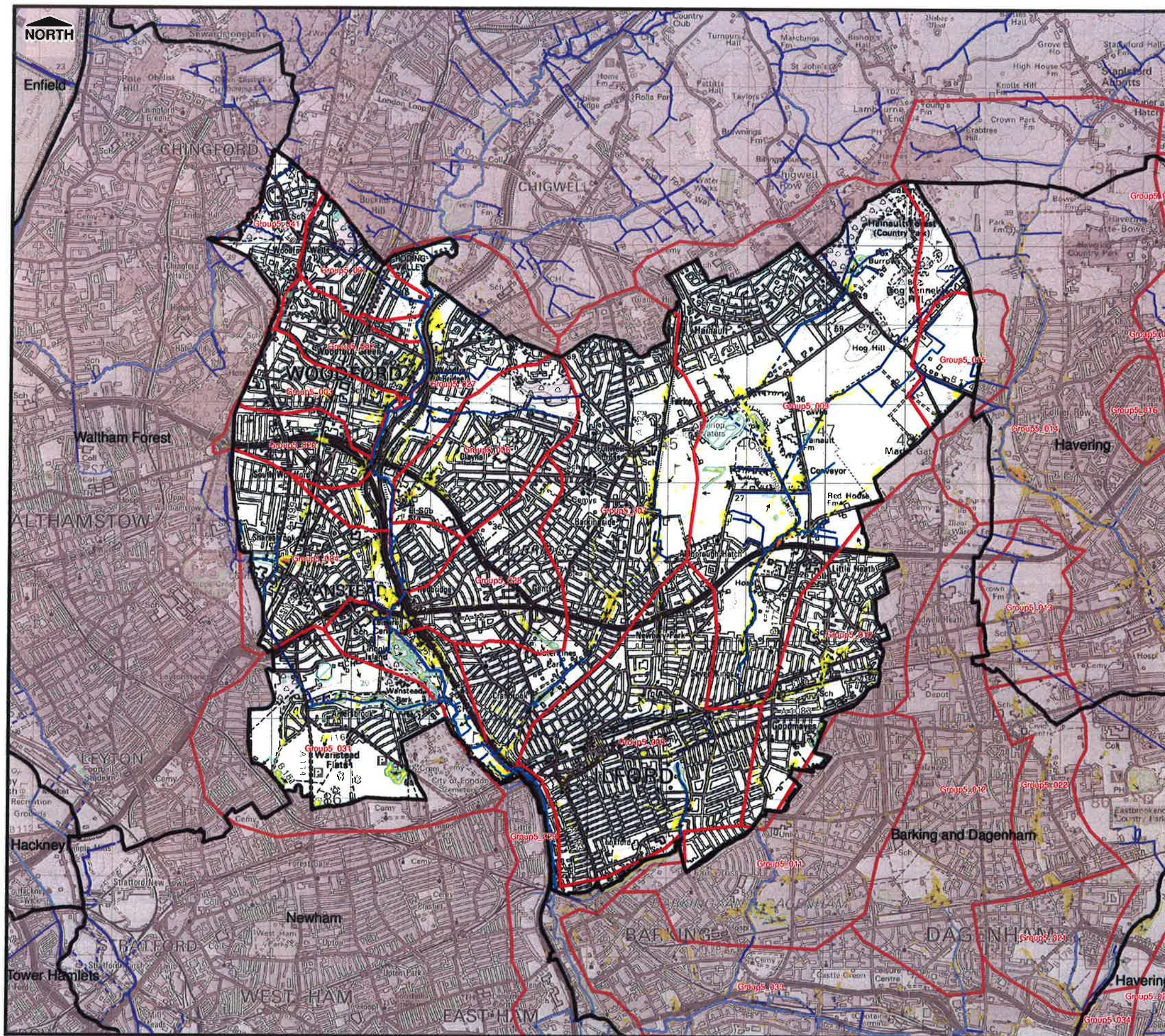
Environment
Agency



**LONDON
COUNCILS**

GREATER LONDON AUTHORITY

FIGURE D.14



THIS DRAWING MAY BE USED ONLY FOR
THE PURPOSE INTENDED

Legend

- Culverted Watercourse
- Ordinary Watercourse
- Main River
- Permanent Water Bodies
- LB Redbridge Administrative Boundary
- Critical Drainage Area
- Flow Direction

Hazard

- Caution (Very low hazard)
- Moderate (Danger for some)
- Significant (Danger for most)
- Extreme (Danger for all)

Notes

- This map only shows the predicted likelihood of surface water flooding (this includes flooding from sewers, drains, small watercourses and ditches that occurs in heavy rainfall) for defended areas, and due to the coarse nature of the source data used, are not detailed enough to account for precise addresses.
- Users of this map should refer to section 3.2 of the Surface Water Management Plan for a complete description of limitations and accuracy of the flood extents shown.

London Borough of Redbridge



Surface Water Management Plan

© Crown Copyright. All rights reserved. GLA (LA100032379) 2011
Covers all data that has been supplied and distributed under
license for the Drain London project.
Digital geological data reproduced from British Geological Survey
(c) NERC Licence No 2011/053A

Scale at A3	Date	Drawn by	Approved by
1:50,000	23/03/2011	N.Smith	P.Eccleston

Surface Water Flood Hazard Rating
1 in 30 Chance of rainfall event occurring
in any given year (3.33% AEP)

Consultants



JACOBS

Jacobs UK Ltd.
Simpson House
6 Cherry Orchard Road
CROYDON
Surrey
CR9 6BE

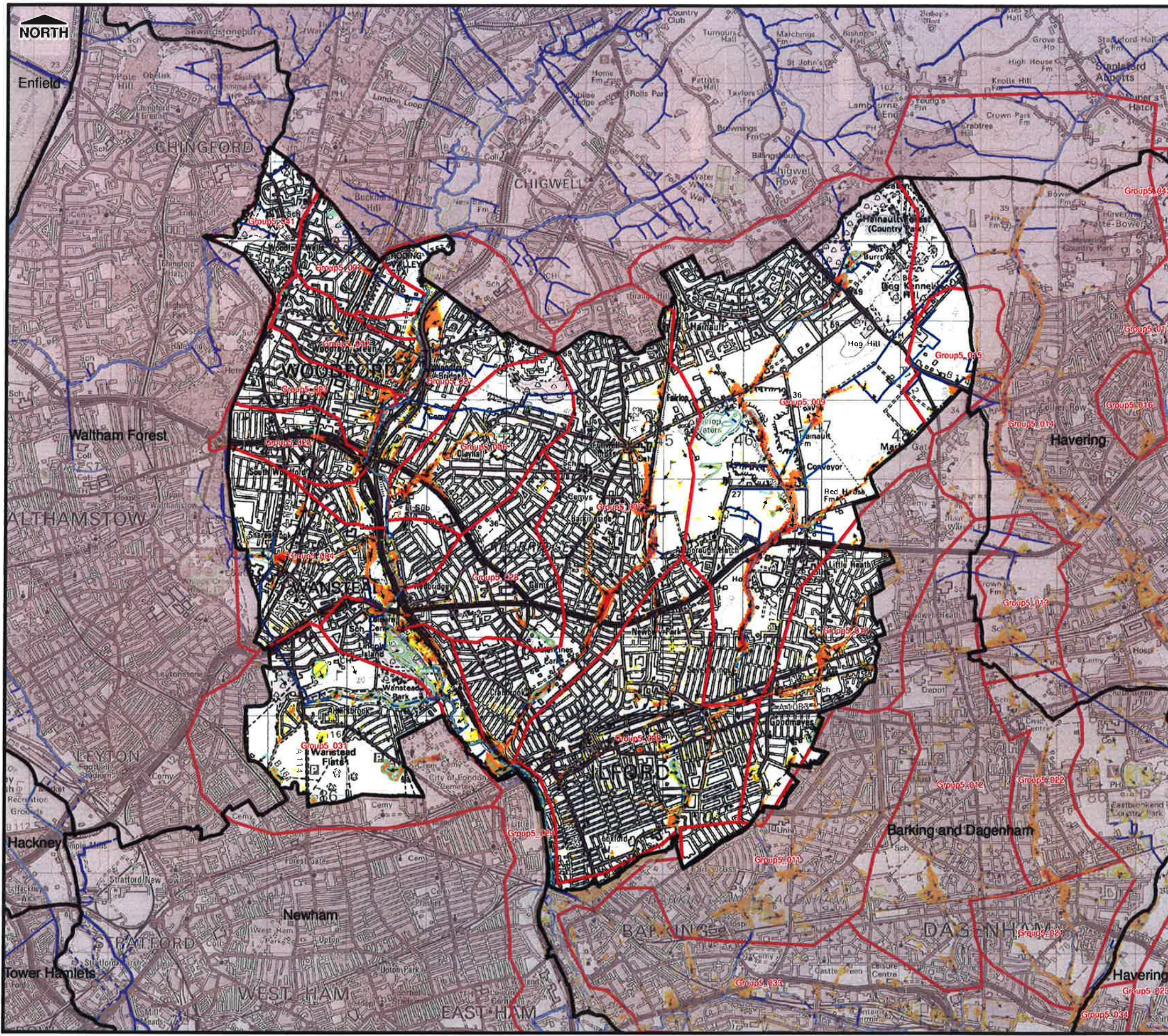
Drain London Programme Board Members



GREATER LONDON AUTHORITY

FIGURE D.13

Filepath: N:\2010\Projects\2010s4514 - Jacobs UK Ltd - Drain London Tier 2 Group 5\Graphical Data\ArcGIS\Templates\Revised Templates\SWMP_200y_Hazard_Map_Redbridge.mxd



THIS DRAWING MAY BE USED ONLY FOR THE PURPOSE INTENDED

Legend

- Culverted Watercourse
- Ordinary Watercourse
- Main River
- Permanent Water Bodies
- LB Redbridge Administrative Boundary
- Critical Drainage Area
- Flow Direction
- Hazard
 - Caution (Very low hazard)
 - Moderate (Danger for some)
 - Significant (Danger for most)
 - Extreme (Danger for all)

Notes

- This map only shows the predicted likelihood of surface water flooding (this includes flooding from sewers, drains, small watercourses and ditches that occurs in heavy rainfall) for defended areas, and due to the coarse nature of the source data used, are not detailed enough to account for precise addresses.
- Users of this map should refer to section 3.2 of the Surface Water Management Plan for a complete description of limitations and accuracy of the flood extents shown.

London Borough of Redbridge



Surface Water Management Plan

© Crown Copyright. All rights reserved. GLA (LA100032379) 2011
Covers all data that has been supplied and distributed under license for the Drain London project.
Digital geological data reproduced from British Geological Survey (c) NERC Licence No 2011/053A

Scale at A3	Date	Drawn by	Approved by
1:50,000	23/03/2011	N.Smith	P.Eccleston

Surface Water Flood Hazard Rating
1 in 200 Chance of rainfall event occurring in any given year (0.5% AEP)

Consultants



Jacobs UK Ltd.
Simpson House
6 Cherry Orchard Road
CROYDON
Surrey
CR9 6BE

Drain London Programme Board Members



GREATERLONDONAUTHORITY

FIGURE D.16