



Discover Redbridge

With **NINE** green flag parks,
a forest, lakes, and
hundreds of activities
and events, there's so
much for families to do
in Redbridge this summer

Tick off all our parks
this summer **Page 7**

Summer events listing
Pages 36 to 41

Local business offers
Pages 44 and 45



www.redbridge.gov.uk/discover

working towards
**child
friendly
Redbridge**

CANDIDATE

 **CHILD
FRIENDLY
COMMUNITY**

unicef 
UNITED KINGDOM

CONTENTS

Introduction.....	3	HISTORY AND HERITAGE	
Discover Redbridge map.....	4-5	Redbridge Museum.....	22
PARKS		Valentines Mansion.....	23
List of parks to visit.....	7	LIBRARIES	
Valentines Park feature.....	8	Library Activities list.....	24
Outdoor Gyms.....	9	Fabula Festival.....	25
Wellbeing Walks.....	10	Valentines Mansion feature.....	26
Fairlop Waters feature.....	11	Getting married?.....	27
Hainault Forest feature.....	12	Redbridge is getting Child Friendly.....	28-30
Top ten outdoor activities for kids.....	13	Back to School uniform shop.....	31
Cycle in Redbridge.....	14	Marley the Ilford Mammoth and Quiz.....	32-35
SPORTS		EVENTS THIS SUMMER	
Bats and Racquets.....	15	Events July.....	36-37
Park Run.....	16	Events August.....	38-39
Vision Summer Gym offer.....	17	Ilford in Colour.....	39
Mega Mix.....	18	Wanstead Festival.....	40
Over 60s.....	19	Ilford Business Awards.....	41
RAINY DAY ACTIVITIES		Redbridge Photography Awards.....	42-43
Library Activities.....	20	Local business offers.....	44-45
Space Studios.....	21	Mildmay Nursery.....	46
Owls Play Centre.....	21	Children's Birthday Parties.....	47
		Summer Holiday Activities.....	48



INTRODUCTION

Redbridge is one of London’s greenest boroughs. We have award-winning parks (including two in the national top ten!), ancient woodland, and outdoor spaces that bring people and communities together. This booklet is your guide to enjoying every part of our borough this summer – and discovering Redbridge.

Whether you’re heading out with family for a day at the farm in Hainault, scaling the bouldering walls at Fairlop, or simply unwinding with a walk around Wanstead Park, there’s something in here for everyone. And we’ve made it easier than ever to get involved – from wellbeing walks, MegaMix activities for children, £1 swims, to outdoor gyms and park runs for all ages.

Behind each of these opportunities is our simple belief: everyone deserves access to free and affordable things to do in their local area. That’s why we’ve protected and enhanced our leisure services even in tough times.

Our investment in new playgrounds and facilities reflects our long-term commitment to health, inclusion and quality of life. Redbridge is a great place to live, work and spend quality time. We have huge ambitions for our borough, so we’re building on our commitment with lots of new leisure facilities and activities in the pipeline for the coming months and years.

This year’s edition also shines a light on the voices of young people. Redbridge is proud to be working with UNICEF UK to become London’s first formally recognised Child Friendly Borough. You’ll see that spirit of inclusion, creativity and fun reflected throughout these pages in the activities on offer.

I hope you will use this guide to explore somewhere new, revisit your favourite spot, or simply to enjoy everything Redbridge has to offer.

This is your borough – and it’s yours to discover.

Councillor Kam Rai
Leader of Redbridge Council



Spotted in Redbridge

This magazine is jam-packed full of things to see and do in Redbridge this summer. To get you started, see if you can find these hidden and not-so-hidden gems in our borough – why not check them off as you go!

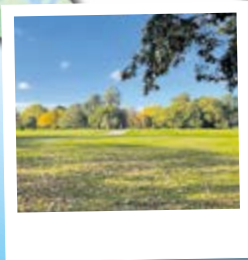
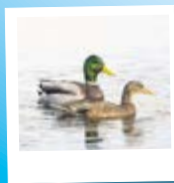
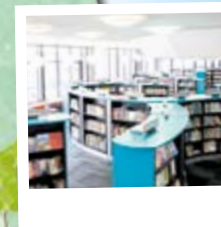
- ☐ The Gypsy Stone, mysterious and with local folklore connections, tucked away in Hainault Forest
- ☐ Rare broad-leaved helleborine orchids in the ancient woodland to the west of the water tower in Claybury Park
- ☐ Winston Churchill’s statue in his former constituency of Woodford
- ☐ The site of the Fairlop Oak, which stood for around 1800 years in Hainault Forest
- ☐ The actual orchard at Orchard Playing Fields
- ☐ The view of Tower Bridge and The Shard, from Wanstead Flats
- ☐ Row boats you can hire on the lake in Valentines Park
- ☐ An ancient oak tree in Claybury Woods
- ☐ Ducks on the Roding Valley (please don’t feed them bread)
- ☐ Ice creams in the gelato and dessert shops on Ilford Lane and Cranbrook Road

Discover Redbridge

There's plenty to do in Redbridge this summer! Enjoy vibrant outdoor arts across the borough, or keep the kids entertained with action-packed Mega Mix events.

Make the most of the borough's outdoor spaces, including cricket pitches, tennis and basketball courts. With endless ways to explore and unwind, Redbridge is the perfect place to soak up the summer sunshine!

Get fit in the outdoors this summer. Ten of our parks have outdoor gyms, like this one in Clayhall Park.



Art in the open air! Discover free outdoor arts across the borough - no tickets, no walls, just art for all.

Borrow up to 20 children's books for three weeks at Redbridge Central Library

Valentines Park lake
Hop into a rowing boat and glide across the scenic lake at Valentines Park!

Visit the trail of murals on Ilford Lane, and while you're there, why not grab a delicious bite to eat in one of the many cafes and restaurants.

Wanstead Park
Take a hike through the Wanstead Park Loop - a picturesque walk through woodlands, lakes and historical landmarks.

Game, set, match!
Head to Valentines, Goodmayes, Clayhall or Ray Park to quell your Wimbledon fever.

North, south, east and west: Redbridge is bursting with beautiful parks

Picnics, walks, cycling and sports. How many of our parks will you tick off your list with a visit this summer?



Goodmayes Park and Orchard Playing Fields

Twenty five acres of recreational open space. Certainly worthy of its Green Flag status.



Loxford Park

Bring your kids to this fantastic play area, with mounds, tunnels, musical equipment for tonnes of fun!



South Park

An Edwardian park with most of its features from 100 years ago beautifully preserved. There's a large lake, an abundance of large mature trees, shrubs and flower beds.



Claybury Woods

Claybury Woods and park cover almost over 70 hectares of ancient oak and hornbeam woodland.



Clayhall Park

Features an impressive avenue of mature horse chestnut trees, and a maze with wheelchair access.



Wanstead Park

Hire headphones from the library and let local voices gently guide you around and let you into their memories. There's also free seasonal fishing, a small museum and plenty of wildlife.



Roding Valley Park

Along the river you will find plenty of ducks, herons, dragonflies, butterflies and many different species of flowers. There are also a number of small areas of woodland for you to explore.

We have so many parks in our borough! Have you visited them all?

- ☐ **Seven Kings Park** - play area, formal rose beds, plenty of places to sit and enjoy
- ☐ **Uphall Recreation Ground** - play area, and a relaxing trip away from the bustle of Ilford Lane
- ☐ **Westwood Recreation Ground** - play area, trees, great for a stroll
- ☐ **Ilford War Memorial garden** - built to recognise and remember the 1,159 from Ilford, fallen during the First World War
- ☐ **Crucible Park** - play area and plenty of grassland for picnics
- ☐ **Barley Lane Recreation Ground** - a relaxing stop away from the shops
- ☐ **Grove Road Gardens** - quaint, colourful and great for a dog walk
- ☐ **Hainault Recreation Ground (Penrith Park)** - bowls, cricket and football clubs
- ☐ **Oaks Lane Recreation Ground** - a scenic spot with a play area
- ☐ **Manford Way Open Space** - another play area!
- ☐ **Brocket Way Open Space** - a small but perfectly formed green space
- ☐ **Barkingside Recreation Ground** - lots of children's play equipment
- ☐ **Christchurch Green Recreation Ground** - conveniently located in Wanstead High Street
- ☐ **Martley Drive Play Area** - play equipment for under 8s
- ☐ **Redbridge Recreation Ground** - wild flowers and a newly planted arboretum
- ☐ **Redhouse Play Area** - slides, swings and more fun for little ones, safely fenced off
- ☐ **Elmhurst Gardens** - wonderfully autumnal as the leaves change
- ☐ **Lechmere Avenue play area** - great for a stroll or dog walk
- ☐ **Onslow Gardens** - perfect for leisurely strolls or picnics
- ☐ **Ray Park** - vast green space with walks along the River Roding
- ☐ **Rose Avenue play area** - full of children's play equipment in a fenced area

Valentines Park

You could while away hours in Valentines Park. With a historic house (perfect for a wedding), 300 year old Maple trees, and a line of row boats ready for splashing around on the lake. You are welcomed in with a sense of playful nostalgia.

Stroll a little further and you'll be greeted by geese and swans, at the right time of year followed by a line of fluffy cygnets. Squirrels are tame enough to creep over to see whether you have any nuts for them, but only if you stand really still as they approach.

Valentines Park's far end will be the site of the new lido, the first to be built in London for decades. With a splash area for little ones, a studio for dance-class lovers, and a café for winding down after exercise, it's not only an outdoor pool in the offing at this new attraction.



Photo credit: Callum Church Redbridge Nature category, Redbridge Photography Awards 2024



PARKS

Lift your spirits in one of Redbridge's outdoor gyms!

Here's an idea for a stop-off on the way home from work, or for a detour on a morning stroll...
Visit an outdoor gym!

We have ten of them in the borough, with equipment including cross trainers, benches for ab work, dips bars, bikes and more, and they're free to use.

- Queen Elizabeth II Field Barkingside Recreation Ground
- Clayhall Park
- Claybury Woods and Park
- Goodmayes Park
- Hainault Recreation Ground
- Loxford Park
- Manford Way
- Ray Park
- South Park
- Seven Kings Park
- Valentines Park

Find out more about our outdoor gyms at www.redbridge.gov.uk/discover/outdoor-activities/outdoor-gyms/



Clayhall Park



Manford Way



Ray Park

PARKS

Do you sometimes feel like getting out and about, but need to meet a few people to give you the encouragement?

Well here's your invitation to join a wellbeing walk

Our wellbeing walks take place in parks across the borough, and are run by friendly folk who would love for you to join them.

There's no pressure on these walks. No pressure on huge conversation, and no pressure on marching at speed. They're gentle, welcoming, friendly and supportive. Anyone can join, no matter your fitness level. You'll be greeted with a smile and will enjoy a leisurely stroll on a planned route through our beautiful parks.

Some people join the same one each week, some try different walks in other parks, and some people just dip in when it works for them. It's entirely up to you.

Mondays 11am

7 July at Fairlop Waters

14 July at Clayhall Park

21 July at Seven Kings Park

28 July at South Park

4 August at Valentines Park

11 August at Goodmayes Park

18 August at Fairlop Waters

Note there's no walk on the Bank Holiday.

Tuesdays 9.30am – Women's Only Weekly Walk in Goodmayes Park

Every Tuesday at Goodmayes Park. Meet at the entrance at Aberdour Road/Abbotsford Road.

Wednesday 11am – Hainault Forest

Every Wednesday, meet at the car park adjacent to Global Café.



Thursdays 9am – Goodmayes Park

Every Thursday, meet at the entrance at Aberdour Road/Abbotsford Road.

Thursdays 11am

10 July at Hainault Forest

17 July at Fairlop Waters

24 July at Valentines Park

31 July at Wanstead Park

7 August at Hainault Forest

14 August at Fairlop Waters

21 August Valentines Park

28 August at Wanstead Park

Saturdays 10.30am

Every Saturday from Christ Church Green Park – next to the Church

Monday 10.30am – Brisk Walk in Hainault Forest

The 1st Monday of the month at Hainault Forest unless there is a Bank Holiday, then there will be NO walk (the walks will take place on the first non-Bank Holiday Monday of each month). Meet at the car park adjacent to Global Café.

Fairlop Waters

The country park with two sides

Beautifully peaceful for a quiet stroll to nature's soundtrack of birdsong, or for a spot of fishing on the lake, yet full of adrenaline for those who dare to climb, leap, sail and fly.



Sailing

Courses in Fairlop are for beginners and also those with experience. There's a variety of dinghies to suit your style – including our new fleet of Hartley 10s and Fusions. Find out more at <https://visionrcl.org.uk/centre/fairlop-outdoor-activity-centre/>

Bouldering

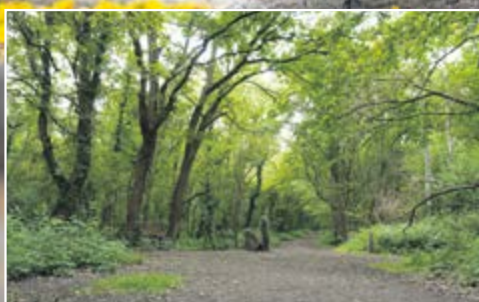
Come and try out the UK's largest boulder park located beside the lake at Fairlop Waters Country Park. There are nine individual boulders which are constructed of sprayed and carved concrete and vary in heights and shapes to cater for all standards, from novice to expert.



Historic Hainault Forest

Hainault Forest is one of London's hidden gems, a large park with a forest of ancient trees (once a royal hunting ground for Henry VIII)

While visiting the forest, why not walk through the Woodhenge behind the lake which features a trail of wood sculptures by local artists. You could then stop for a coffee and a slice of cake in the beautiful new café, before trying out some laser wood cutting, or pottery painting in the studios behind it. Children can build dens, spot mini-beasts and get some good old fashioned fresh air, before testing out Redbridge's longest tunnel slide and then popping in to say, "Hi" to their furry friends in Foxburrows Farm.



TOP TEN outdoor activities for kids!

working towards
child friendly
Redbridge

CANDIDATE
CHILD FRIENDLY COMMUNITY
unicef
UNITED KINGDOM

Get your smiles ready, Redbridge is bursting with fun family action. Which of these will you be trying out this summer?

10

Practice your pull shot in the cricket nets at Hainault Rec or at Seven Kings Park

9

Have a good old march around the woods in Claybury

8

Build a den in Hainault Forest

7

Climb, slide and swing around the play equipment in Loxford Park

6

Beat your parents at tennis in Goodmayes Park

5

Clamber around on the bouldering equipment at Fairlop Waters

4

Splash around on a row boat in Valentines Park

3

Borrow a bike at Redbridge Cycling Centre

2

Visit your favourite furry friends at Foxburrows Farm

1

Take photos of everything you see and enter it into the Young People's category in this year's Photography Awards!
<https://engage.redbridge.gov.uk/rpa-2025>

SCAN ME





Cycling centre

Did you know there are BMX tracks, road tracks and a vast selection of bikes you can hire, at Redbridge cycling centre?



There are qualified coaches and bike hire, so if you're a beginner you'll be well-supported. If you'd prefer just to have a go, then bring your bike and come along! This centre is suitable for all abilities.

Phone: 020 8500 9359

Email: rcc@vision-rcl.org.uk

Cycle Sisters

One for the ladies in Redbridge: Cycle Sisters Redbridge group runs rides on Tuesday and Saturday mornings. Rides meet at 9.15am for a 9.30am start and generally return by 12pm.

They ride at a gentle, sociable pace with plenty of chatting and time to enjoy your surroundings. All rides have a cafe stop which is also an opportunity to get to know your fellow sisters as well as enjoying some tea and cake!

Booking is essential for all rides and details are posted on the WhatsApp group - email redbridge@cyclesisters.org.uk to be added to the WhatsApp group.



Cycle routes

Did you know there's a network of cycle routes in Redbridge?

<https://my.redbridge.gov.uk/map/cycle-routes>

Bats and Racquets

Redbridge is fast becoming a sporting sensation

In 2023 tennis courts in ten parks were refurbished, thanks to significant investment from the Government, the Lawn Tennis Association and commitments from Redbridge Council and Vision RCL.



TENNIS

Have you been enjoying these great new facilities?

You can book a court online from just £3.

You'll find our fab new tennis courts at:

- Barkingside Recreation Ground
- Barley Recreation Ground
- Clayhall Park
- Elmhurst Gardens
- Goodmayes Park
- Loxford Park
- Ray Park
- Seven Kings Park
- South Park
- Valentines Park

CRICKET

Did you know you can enjoy a friendly match with friends and hire a cricket pitch at a local park near you?

If you aspire to play at a higher level, Redbridge is home to a number of excellent cricket clubs.

Grass pitches

Cricket pitches are available in several of our parks for hire on a seasonal booking or for one off bookings.

- Valentines Park - one cricket pitch
- Barkingside Recreation Ground - two cricket pitches
- Hainault Recreation Ground - four cricket pitches

More on Redbridge's excellent sporting facilities
<https://www.redbridge.gov.uk/discover/sports/>

Everyone's invited!

Get your fun 5k fix this weekend, in a Redbridge Park Run

Redbridge has two beautiful spots for your weekly 5K: Valentines Park and Wanstead Flats.

It's totally free. Just sign up once on the Park Run website, print your barcode, and you're all set. Runs kick off at 9am sharp every Saturday, so get there a bit early to soak up the atmosphere. Each course is a scenic 5 kilometres, with no pressure to be fast.



Park Runs in Redbridge are a celebration of community spirit.

You'll find friendly faces, encouragement at every turn, and maybe even a new buddy to run with.



It's a great way to boost your mood while enjoying our beautiful green spaces. Park Runs are great for those looking for their personal best, but they're just as fun for slow joggers, people walking, those with buggies, and even groups in fancy dress!

Event Director of Valentines Park Run, Andrew Gwilliam said, "People from all parts of our diverse community take part at our event each week as runners, walkers, or volunteers. Valentines parkrun is a great way to mix with others, and to get regular exercise in our beautiful park. There's no minimum commitment, just check out our website for information!"

So here's your invitation to dust off those running shoes, bring your best smile, and get on the right foot next Saturday.

It's a run-derful way to start your weekend!

<https://www.parkrun.org.uk>



REDBRIDGE LEISURE

Weather a bit iffy? Head indoors where you can swim, steam, gym, play and have hours of fun in the leisure centres across our borough.

Visit our leisure centres this summer, where you can swim, enjoy some exercise classes and stay fit and well. Visit <https://visionrcl.org.uk/sport-health-physical-fitness/>



SUMMER GYM

VISION
ISLEISURE

3 MONTH GYM ONLY MEMBERSHIP FOR £100

Shaping up for summer? Get active and feel great with our special offer!

Unlimited gym

Free friend Fridays

Free bike hire

Sign up by 31 August



For more information visit visionrcl.org.uk/join



VISION
REDBRIDGE
CULTURE & LEISURE

**TASTER
SESSIONS**

OPEN TO
REDBRIDGE
RESIDENTS
ONLY

**5+
YEARS**

**REDBRIDGE
HOLIDAY**

**MEGA
MIX**

CINEMA
or SWIM
for **£1**

MONDAY 28 JULY TO FRIDAY 29 AUGUST

Challenge yourself to try something new this summer!

We have a variety of indoor and outdoor activities for you to come and get involved with:

- adapted activities
- arts & crafts
- dance and drama
- digital workshops
- interactive library activities
- music
- nature
- roller skating
- sports
- and so much more!



Advanced booking required.
visionrcl.org.uk/megamix

London Borough of
Redbridge

working towards
**child
friendly
Redbridge**

VISION
REDBRIDGE
CULTURE & LEISURE

Over 60?

We see you out there getting active in our parks, exercise classes and gyms – keep it up, you're doing great!

If you'd like to try something new, to keep looking after your health and wellbeing, or if you need to increase your activity to stay fit and healthy, then take a look at the activities on offer that will give you some lovely social time, with some gentle exercise.

You can pay as you go in our group exercise classes, so why not have a look at the class timetable for your local leisure centre?

Wellbeing walks are friendly and welcoming, and a great way to spend a couple of hours in the sunshine – see page 10 for more details.

There's no base level of fitness required – why not have a go at something new this week?



RAINY DAY ACTIVITIES

Get away from the gloom and get bright and fun indoors!



More than just books!

Whatever the weather, why not pop into your local library. Of course you can step into other worlds by borrowing a book, but there is also a summer programme of art, craft, and even the odd performance inside. Libraries in Redbridge are a hive of activity and we're lucky to have 10 libraries across our borough.



SPACE studios

We are lucky to have an art gallery right here in Redbridge. This summer you can see Andy Singleton's exhibition, Natural Connections, and watercolour paintings of local landmarks by Ray McSharry. You can take part in an art show for gamers, or a writing and art-making workshop.

Discover the deep connections between our human bodies and the natural world through the awe-inspiring paper sculptures of artist Andy Singleton.

The exhibition of watercolour paintings by Redbridge artist Ray McSharry, captures the borough's parks, streets and buildings through the changing seasons, revealing the beauty of our local landmarks.



© David Mirzoeff

More: <https://spacestudios.org.uk/whats-on/>



© David Mirzoeff

Owls Play Centre

Burn off that little person energy with possibly the most fun you can have on a rainy afternoon. Owls play centre is a hoot!

Fairlop Waters Country Park, Forest Rd, Ilford IG6 3HN



Have you ever wondered about the history of some of your favourite places to visit in Redbridge?

Why not delve into some of the history we have to offer, learn about the heritage in Redbridge and the people who have lived and worked here. Explore what's on your doorstep and how history has shaped Redbridge.



Redbridge Museum

Did you know Sylvia Pankhurst lived in Woodford? Or that Britain's best-preserved mammoth tusks and skull was found near Ilford Lane? Redbridge Museum, found on the second floor of Redbridge Central Library is a treasure trove of local history, with a special Ice Age exhibition featuring our local mammoth, and local stories from across the ages.



Redbridge Central Library and Museum, Clements Road, Ilford IG1 1EA

Redbridge Heritage Centre

The Heritage Centre offers a wide range of free local and family history resources and archives. It holds the largest collection of materials in Redbridge on the history of Ilford, Wanstead, Woodford and Redbridge.

The Heritage Centre can be found on the second floor of Redbridge Central Library in Ilford.



Valentines Mansion, Emerson Road, Ilford IG1 4XA



Valentines Mansion

Valentines Mansion is set within the historic Valentines Park. You can step back in time and visit the recreated period rooms, including the Victorian Kitchen and Georgian bedchamber. It was built in the seventeenth century for Elizabeth Tillotson, following the death of her husband, the Archbishop of Canterbury.

Enjoy the dedicated Family Room and get all dressed up in Victorian costume and pose for a picture portrait, play cook at the mini kitchen range, get busy with the mini mansion dolls house, delve in to the history of Valentines on the touch screen computer, or relax with a book or some jigsaws.

LIBRARIES

Shhh... These gorgeous Redbridge libraries have a lot more to offer than just reading books.

From big libraries to tiny libraries and aesthetically-pleasing libraries, each of them is bursting with books to borrow and read as well as spaces for children, free computers, events and exhibitions.



Libraries in Redbridge

If you're searching for a peaceful spot to enjoy your new book or borrow a novel that's been on your list for a while, Redbridge is full of fantastic hideouts in the shape of libraries

Did you know our libraries have hundreds of activity sessions? Why not tick them all off this summer!

- | | |
|--|--|
| <input type="checkbox"/> Art and crafts | <input type="checkbox"/> Sewing club |
| <input type="checkbox"/> Rhyme time | <input type="checkbox"/> Textile art and crafts |
| <input type="checkbox"/> Stories, rhymes and songs | <input type="checkbox"/> Interactive gaming sessions |
| <input type="checkbox"/> Children's reading group | <input type="checkbox"/> CoderDojo mornings |
| <input type="checkbox"/> Lego club | <input type="checkbox"/> Board games club |
| <input type="checkbox"/> Chess club | |

Find out where and when these, and many more activities are happening at <https://visionrcl.org.uk/activities/>

VISION
ISLIBRARIES

REDBRIDGE FABULA FESTIVAL

7 JULY - 31 AUGUST 2025

A celebration of **books**
and **culture** in your local
library this summer!

storytelling
arts & crafts
creative workshops
and much more!



For more information visit
www.visionrcl.org.uk/fabula

fabula
reading
challenge





Say 'I Do' at the beautiful **Valentines Mansion**

- Grade II* listed wedding venue
- Set in beautiful historic gardens
- Choice of ceremony rooms
- Easy to reach by road, rail & tube
- Car parking on site

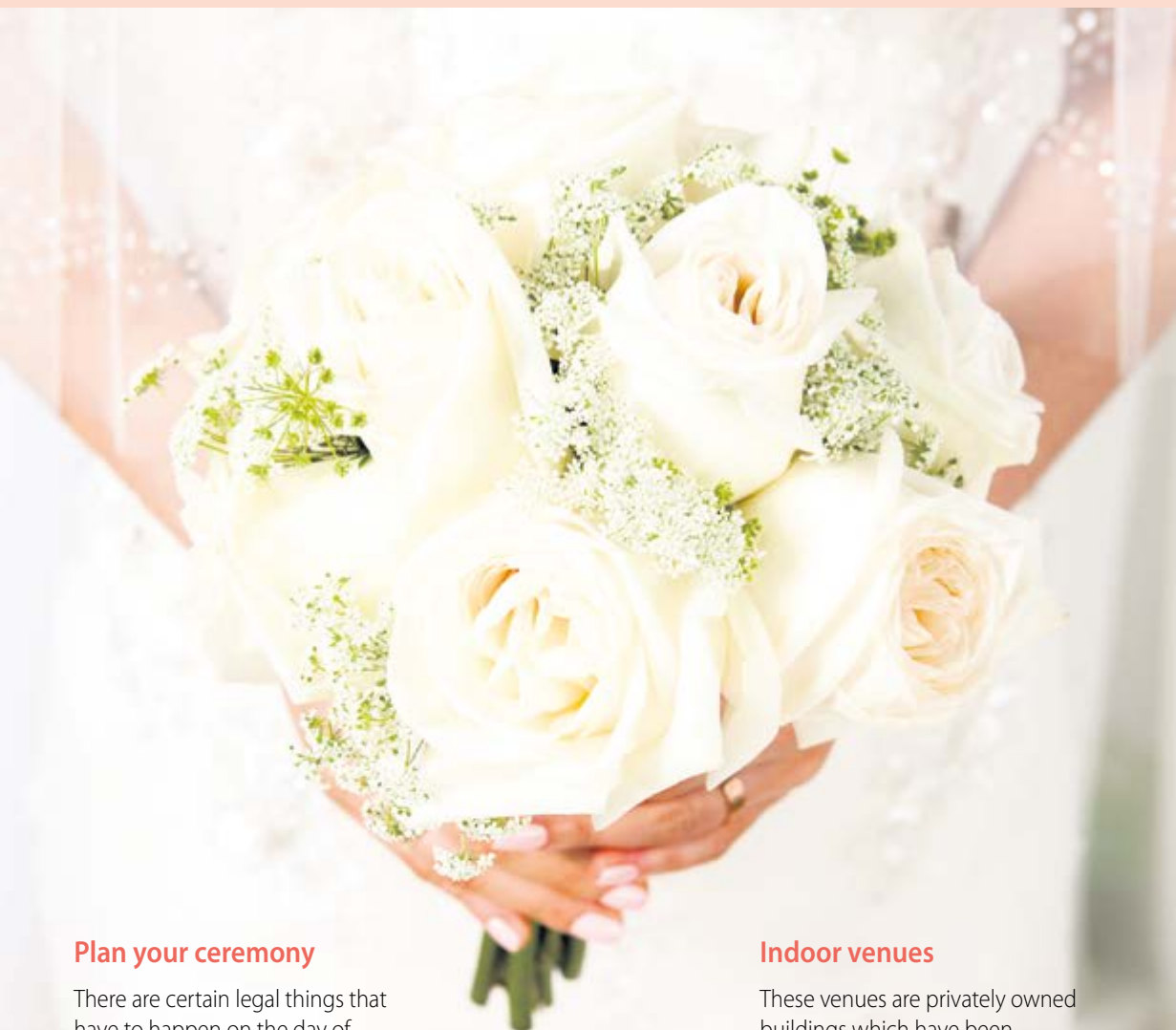
© Instinct Wedding Photography



VISION
REDBRIDGE
CULTURE & LEISURE

Call us to find out more on 020 8708 8100
www.valentinesmansion.com
Emerson Road, Ilford, Essex, IG1 4XA.

GETTING MARRIED?



Plan your ceremony

There are certain legal things that have to happen on the day of your ceremony.

Whichever venue you book for your ceremony, you will also need to book a registrar to attend the venue to conduct the ceremony. Details of how to do this will be given to you at the venue or find out how to book a registrar.

You do not need to book a registrar for ceremonies at the Library Suite or the Roding Room. If you would like to book any of the venues you will need to contact the venue directly.

Outdoors venues

It is possible to have the whole legal ceremony outdoors at an approved venue, including the signing of the schedule.

You'll need to confirm that your venue is offering legal outdoor ceremonies and that the outdoor location has been approved by the registration service.

Indoor venues

These venues are privately owned buildings which have been approved for marriages, civil partnerships, renewal of vows and naming ceremonies.

They must have a valid licence at the time of your ceremony.

- London Chigwell Prince Regent Hotel
- London Darbar
- Mayfair Venue
- The Coliseum Suite
- The Boathouse, Fairlop Waters
- The Willows
- The Library Suite, Town Hall, Ilford
- Valentines Mansion

Redbridge is getting Child Friendly!

Did you know we've been working with UNICEF UK for some time now, to bring children's rights into the core of our council, our decision-making and our community.

Why? Our children are the future. They're the ones whose borough this is going to be. They're the ones who will be impacted, positively or negatively by the developments happening in Redbridge, and we know they care. We've spent time asking to local children, involving them in local projects, getting their views and understanding what it's like to grow up here. We've then brought their voices into all council's key decisions, so we can build a borough that works for children and young people, and one they own and feel a genuine part of.

We knew we had a good base. Our children's services has been rated Outstanding by Ofsted in every criterion.

96% of our schools are good or outstanding. We have an abundance of leisure facilities, many of which are free or low cost, for children and families in our borough, including parks, a forest with a farm, lakes, playgrounds and so much more.

But we wanted ALL things in Redbridge to be child friendly, and to be designed with and for children and young people. This is why we challenged ourselves to work towards the rightfully hefty criteria from UNICEF UK. We want deep impact from this work, and our young people have told us they have wanted this too.

If we are formally recognised by UNICEF UK as being a child friendly borough, we will be the FIRST in England!



Children discussed issues that matter to them at a Youth Climate Forum



Children chose the play equipment including the longest slide in Redbridge



Children created sculptures for the Fairlop Waters sculpture trail

Redbridge is getting Child Friendly!

Projects we've worked on together with young people in our borough

Helping children play outside freely and safely

Play streets have gone from strength to strength and we now have 32 play streets in the borough. This is a free activity that anyone has the right to apply for. Streets are closed for a few hours each month, so the whole community can come out, get to know each other, and play together.

These are a few of our projects, but there are so many more. Children's views are built into all our key decisions.

Mental health support in Redbridge

An event was held in Redbridge Town Hall, to give young people a platform to give their views on mental health support in the borough. Young people had direct and genuine input in the formation of policy that will affect them.

Seven Kings Hub

In the plan and design process for a new community hub in Seven Kings, 30 local children and young people worked with architects and the Council, to create a building and interior spaces that fulfilled their needs.

Here are a few examples of how we're putting children's voices at the heart of everything we do.



Children who designed the Community Hub in Seven Kings

working towards
child friendly
Redbridge



Back to School!

The Exchange shopping centre in Ilford has opened its own pre-loved school uniform shop.

With over 350,000 tonnes of school uniform waste generated in the UK each year, they wanted to do something that supports both local families and the planet. That's why they're proud to introduce a sustainable, wallet-friendly way to shop- with great quality uniform items starting from just £2!



You can now drop off clean, good quality uniform donations to:

- Level 2, The Exchange Shopping Centre, Ilford High Road, IG1 1RS
- City Gates Church, 25 - 29 Clements Road, IG1 1BH
- Fullwell Cross Library, 140 High Street, Barkingside, IG6 2EA
- Gants Hill Library, 490 Cranbrook Road, Gants Hill, IG2 6LA
- Goodmayes Library, 76 Goodmayes Lane, Ilford, IG3 3QB
- Redbridge Central Library, Clements Road, IG1 1EA
- Wanstead Library, Spratt Hall Road, Wanstead, E11 2RQ
- Woodford Green Library, Snakes Lane West, Woodford Green, IG8 0DX

Dates for the pre-loved shop

come on up to Level 3 in The Exchange on these dates:



- Saturday 19 July 2025
- Every Friday in August
- Saturday 20 September 2025
- Saturday 18 October 2025
- Saturday 15 November 2025
- Tuesday 30 December 2025

Marley The Ilford Mammoth

200,000 years ago Ilford was home to the steppe mammoth, which was even bigger than a woolly mammoth!



Thousands of Ice Age animal fossil bones were uncovered in Ilford during the mid-1800s. The bones of about 20 adults and 30 younger mammoths were found close to Ilford Lane.



The steppe mammoths that lived around this area were larger than woolly mammoths and were the size of a double-decker bus!



Steppe mammoths ate grass and plants from the plains around the Thames, which reached all the way out to Ilford and beyond.



Ilford is one of the most important Ice Age sites in Britain. Hundreds of Ice Age animal bones have been found in Ilford town centre.

Ilford was once home to mammoths, elephants, rhinoceroses, bears, and even lions.



Mammoths, rhinoceroses, bears and other large animals lived around Ilford until 200,000 years ago.

The Ice Age lasted from 5 million years ago to about 12,000 years ago.



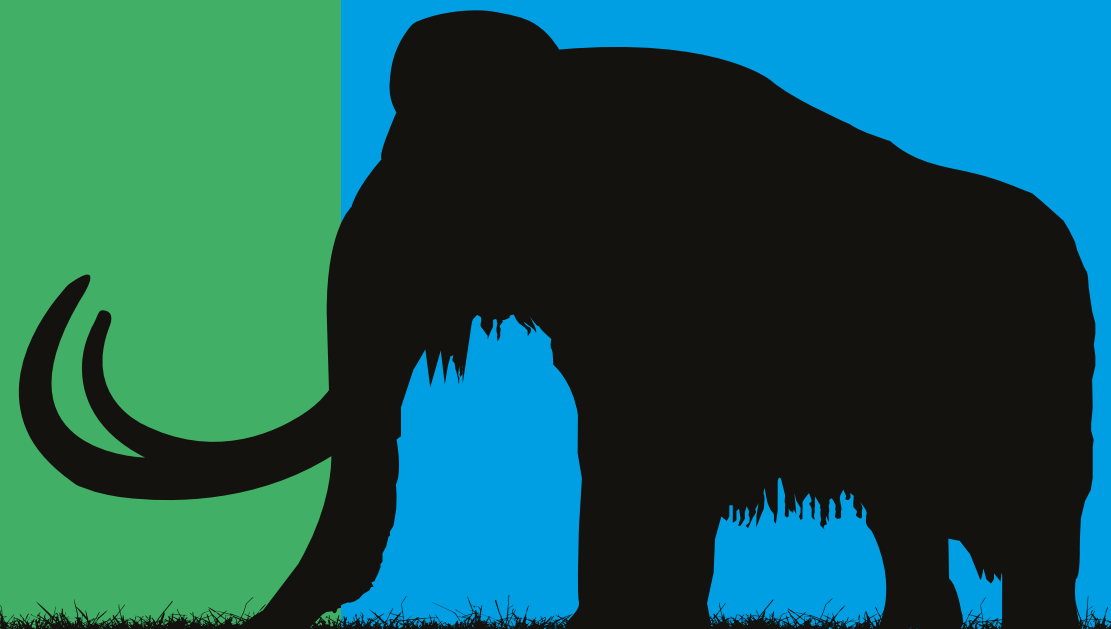
In the 1840s, workmen in Ilford uncovered hundreds of Ice Age bones while digging for clay to make bricks. Among them was the skull and tusks of the steppe mammoth.

Discovered in 1864, the Ilford mammoth's skull is one of the best preserved ever to be found in Britain

You can visit a replica of it in Redbridge Museum.



LIVE
ILFORD
LOVE
TOWN



The Ilford Mammoth Quiz

Can you fill in the gaps?



Find these animal facts on the previous page

Thousands of Ice Age animal fossil bones were uncovered in Ilford during the mid-1800s.

The bones of about _____ adults and _____ younger mammoths were found close to _____.

The steppe mammoths that lived around this area were larger than woolly mammoths and were the size of _____!

Steppe mammoths ate _____ and _____ from the plains around the Thames, which reached all the way out to Ilford and beyond.

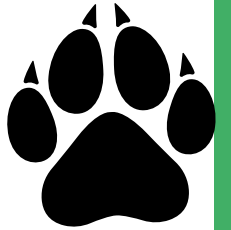
Ilford is one of the most important Ice Age sites in Britain.

Hundreds of Ice Age animal bones have been found in _____.

Ilford was once home to mammoths, elephants, rhinoceroses, bears, and even _____.

Mammoths, rhinoceros, bears and other large animals lived around Ilford until _____ years ago. The Ice Age lasted from 5 million years ago to about 12,000 years ago.

In the 1840s, workmen in Ilford uncovered hundreds of Ice Age bones while digging for clay to make bricks. Among them was the _____ and _____ of the steppe mammoth.



EVENTS THIS JULY

South Asian Heritage Month

Sonia Sabri Company presents Mughal Miniatures: Animal Paradise,

Saturday 26 July,
Ken Aston Square, Barkingside 11am and 2pm

Mughal Miniatures: Animal Paradise dance performance,

Sunday 27 July,
Ilford Town Centre 1pm and 3pm

SPORTS

<https://visionrcl.org.uk/events/>

Al-Noor Annual Boat Race at Fairlop Waters

5 July, 9am-4.30pm
Join the Al-Noor Foundation at Fairlop Waters for another thrilling edition of the Annual Boat Race!

<https://visionrcl.org.uk/event/al-noor-annual-boat-race-at-fairlop-waters/>

Summer watersports camp at Fairlop Waters

A week-long course for kids. Throughout July and August school holidays from 28 July, 9.15am-4.15pm, £250



Redbridge Cycling Centre

Ready Set Ride (Ages 3-6),
12 July, 9.30am, £30

BMX Skills (Age 7-14),
30 July, 12.30pm, from £15

Mountain bike skills (Ages 7-14),
31 July, 12.30pm, from £15

LIBRARY ACTIVITIES

<https://visionrcl.org.uk/events/>

FULWELL CROSS LIBRARY

Alice in Wonderland craft
5 July, 11am

Charlie and the Chocolate Factory craft
12 July, 11am

That's not my dinosaur craft
19 July, 11am

GOODMAYES LIBRARY

Special Rhyme Time with Discover Story Centre
14 July, 10.30am

HAINAULT LIBRARY

The Wild Word Garden
25 July, 11am

The Tiger Who Came For Tea craft
26 July, 11am

REDBRIDGE CENTRAL LIBRARY

The Wobbler storytime
19 July, 11.30am

Face painting and tattoos
19 July, 12pm

Oi Dinosaurs Author event (Kes Grey)
19 July, 12pm

Games Zone
19 July, 12pm

Supernova comic book workshop with Chante Timothy
19 July, 1pm

Bot Art (4yrs+)
19 July, 1.30pm

A Book of People Like Me author event (Joelle Avelino)
19 July, 2.30pm

Story Suitcase
19 July, 4pm

Movie Night
25 July, 3pm

Under 5's Beatrix Potter craft
29 July, 11am

WANSTEAD LIBRARY

Wanstead Wordsmiths
10 July, 6.30pm



PARK ACTION DAYS

Goodmayes Park
5 July, 11am

Seven Kings Park
12 July, 11am

Clayhall Park
19 July, 11am

THEATRE

As You Like It – East London Shakespeare festival
25 July, 7.30pm

Gates open at 6.30pm for picnics, and will take place next to Gardener's Cottage Cafe, by Mansion

With ELSF's signature high-energy numbers, slapstick comedy, and audience participation, this is Shakespeare for everyone!

Only one show this year so limited tickets available! Book at www.elsf.uk



MEGAMIX

During the Summer holidays there will be a variety of affordable taster sessions available for children aged 5+.



All sessions will be held in local facilities and venues in and around Redbridge.

MegaMix includes:

- Swim for £1
- Cinema for £1
- Theatre for £1
- 2-Day tennis camp for £4 per child in Valentines, Clayhall, Goodmayes and Seven Kings Park
- Arts and crafts
- SEND activities

More at <https://visionrcl.org.uk/holidaymix/megamix/>

SPACE STUDIOS

There will be exhibitions throughout the year at SPACE Studios, behind the Ilford Town Hall.

Exhibitions this summer include:

Andy Singleton, Natural Connections

An exhibition that explores our connection to nature through a series of large scale paper installations

5 July, 11am to 2pm (age 18+)

For gamers who never thought they'd take part in an art show!

21 and 28 June, 5, 12, 19 and 26 July, 11am to 2.30pm

Get involved in the new exhibition exploring lived spaces through technology

More: <https://spacestudios.org.uk/whats-on/>



EVENTS THIS AUGUST

SPORTS

<https://visionrcl.org.uk/events/>

Summer watersports camp at Fairlop Waters

A week-long course for kids. Throughout July and August school holidays from 28 July, 9.15am-4.15pm, £250



THEATRE

REDBRIDGE DRAMA CENTRE



Newsies Jr
2 August,
11am and 2pm from £13.50

Wicked Sing-Along (PG) film screening
13 August, 10am and 1.30pm

The Extraordinary Time-travelling Adventures of Baron Munchausen
14 August, 1.30pm and 4pm

Dog Man (PG) film screening
20 August, 10am and 12.30pm

Moana 2 (PG) film screening
27 August, 10am and 12.30pm

<https://visionrcl.org.uk/events/>

LIBRARY ACTIVITIES

<https://visionrcl.org.uk/activities/>

FULWELL CROSS LIBRARY

Watch Me Bloom
Author event (Krina Petal-Sage),
5 August, 2pm

The Secret Explorers drama workshop with Cat & Hutch
22 August, 2pm

GANTS HILL LIBRARY

Sai's Magic Silk – Author event (Shyala Smith)
12 August, 2pm

GOODMAYES LIBRARY

The Good Night Airport – Author event (Tori Kosara)
7 August, 2pm

HAINAULT LIBRARY

The Secret Explorers – drama workshop with Cat & Hutch
22 August, 11am

REDBRIDGE CENTRAL LIBRARY

Under 5's summer wreath craft
5 August, 11am

Under 5's elephant day craft
12 August, 11am

Under 5's under the sea craft
12 August, 11am

Under 5's clown mask craft
19 August, 11am

Carnival Queen – Author event (Donette Williams-Harry)
21 August, 2pm

WOODFORD GREEN LIBRARY

I'm Going to Make A Friend Author event (Darren Chetty)
29 August, 2pm

MEGAMIX

During the Summer holidays there will be a variety of affordable taster sessions available for children aged 5+. All sessions will be held in local facilities and venues in and around Redbridge.

More at <https://visionrcl.org.uk/holidaymix/megamix/>

MegaMix includes:

- Swim for £1
- Cinema for £1
- Theatre for £1
- 2-Day tennis camp for £4 per child in Valentines, Clayhall, Goodmayes and Seven Kings Park
- Arts and crafts
- SEND activities



ILFORD inCOLOUR

COUNTDOWN TO 100 YEARS OF ILFORD

Artists | Performers
Vibrant Celebration of Art Culture | Creativity

Ilford is set to burst into colour this summer with the launch of its first-ever **Mural Art Festival**

🕒 12:00 pm - 5:00 pm 📅 16th-17th August

📍 Ilford Town Centre (by Redbridge Town Hall), SPACE Ilford, Exchange Ilford High Road & Cranbrook Road Entrance, Bodger Building Station Road

ARTISTS: APPLY HERE

SHOWCASE YOUR WORK FOR FREE!

EVENT DETAILS & FREE ENTRY

Ilford is set to burst into colour this summer with the launch of its first-ever Mural Art Festival – inColour, a spectacular two-day event taking place on 16th and 17th August 2025. This festival is part of the countdown to Ilford's 100-year anniversary on 26th January 2026, bringing together artists, performers, and the local community in a vibrant celebration of art, culture, and creativity.

Taking place across four key locations—Cranbrook Road (Exchange Ilford Entrance), Station Road (Bodgers Building), High Road (Redbridge Town Hall), and SPACE Ilford (Clements Road Entrance).

The festival will feature 12 artists creating large-scale murals live from 12pm to 5pm.

More: <https://inilford.com/events/ilford-incolour>

Join Us for a Weekend of Creativity!

Alongside live mural painting, visitors can enjoy:

- Face Painting & Interactive Art
- Fair Rides & Family Attractions
- Music & DJ Performances
- Crazy Golf Experience
- Market Stalls & Local Vendors
- Live Wrestling Shows

WANSTEAD FESTIVAL

VISION
ISPARKS



FREE ENTRY

Join us for a fun-filled day of live music, crafts, kids rides, performances, and exciting dog show. Enjoy a range of delicious street food, a pop-up pub and much more!

Sunday 14 September | 11am - 6pm
at Christchurch Green Recreation Ground

Scan the QR code or visit:
vrcl.uk/wansteadfestival to learn more



COMPETITION!

WIN YOUR WAY INTO THE ILFORD & REDBRIDGE BUSINESS AWARDS 2025

Want to attend the most prestigious business night of the year?
We're giving 2 lucky winners the chance to win a ticket to the Ilford and Redbridge Business Awards 2025 - and all you have to do is help us get more amazing businesses registered!



How to Enter

Convince a local business to register for the 2025 Ilford & Redbridge Business Awards before 31st July 2025.

Once the business registers, ask them to write your full name and email cyril@ilfordbid.com to confirm you referred them and for what category

**That's it -
you're in the draw!**

Only businesses that are newly registered for the 2025 Awards count and have not registered before. All entries must be submitted by **31st July 2025 at 11.59pm**.

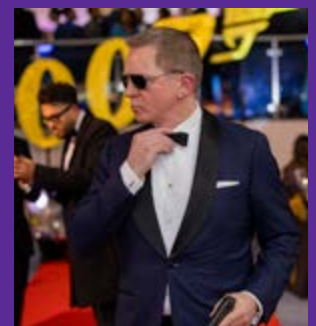
Winners will be chosen at random from valid entries and announced on 5th August 2025. Winner will be the selected for the category of businesses registered with the most referrals

The Offer

Winners will receive one ticket each to attend the glittering awards night gala dinner which will include entertainment, a 3-course meal, and a celebration of local excellence!

Date - 4 December 2025
Time - 7.30pm until Midnight
Location - Coliseum Suite,
300 - 310 High Road, Ilford

Images from last years' awards



Redbridge PHOTOGRAPHY AWARDS 2025



Get snapping and share your best photos!

The Redbridge Photography Awards are here!

Enter the council's yearly photography competition, take a photo and you could win some amazing prizes.

- It's **free** to enter
- The competition runs from **2 June to 12 August**
- Anyone can take part – no matter your age or ability

All you need to do is take a digital photo and send it to us.

To find out more about the prizes and how to send your photo, visit:
<https://engage.redbridge.gov.uk/rpa-2025>
or scan the QR code.

We can't wait to see your photos – good luck!

SCAN ME



Proudly sponsored by:



Winner of last year's competition



Redbridge
Nature category:
Callum Church



Redbridge Young
Peoples category:
Amber Madeley-Fox



Redbridge
People category:
Paul Fox



Redbridge
Places category:
Sue Rosner

PRIZES

- A personalised trophy
- £50 John Lewis voucher
- £10 Amazon voucher
- Four-ball golf voucher to use at Ilford Golf Club
- Two treats at Peaches Bubble Tea (Ilford)
- £15 voucher to use at Ottoman Doner (Ilford)
- £10 voucher to use at Honey Special Cake (East Ham)

Check out the other prizes on the competition website





Eyecare Express Opticians

www.eyecareexpress.co.uk
Instagram - Eyecare Express

Buy 1 get 1 free on prescription spectacles and prescription sunglasses

92 Snakes Lane East Woodford green Ig8 7hx

Get Smart Tutoring



www.getsmarttutoring.co.uk
Facebook @TutoringBarkingside

30 YEARS OFFER:
Free assessment worth £125
Free first 2 lessons 30% discount on termly tuition packages
Offer ends 30th September 2025

57a High Street, Barkingside, Ilford Essex IG6 2AD

Metro Coffee

www.metrocoffee.co.uk Instagram @metrocoffee111 Youtube @metrocoffee111

Special Grand Opening Offer at Ilford Exchange - Special

25% Discount on any Hot drink or Food Items. Voucher can also be redeemed at Gants Hill Station store

(opening soon) Selling freshly brewed coffee for a social cause. We provide training and employment opportunities for people with additional needs

Ilford Exchange, High Rd, Ilford IG1 1RS

Heron's Nest

<https://heronsnest.co.uk>
Instagram @heronsnest
Facebook heronsnestcakes



Free cupcake with every slice of cake purchased

Bespoke cake bakery, offering regular, vegan and free from cakes, for any occasion.

180-182 George Lane, The Galleria, unit 7, E18 1AY

Best Western Greater London Hotel (Ilford Branch)

Instagram: @kunnacoffee

Purchase any hot drink at our Kunna Coffee café and receive a complimentary pastry

(offer open to both hotel guests and local residents)

60 Cranbrook Road, Ilford, London, IG1 4NH

Dezign Studio

www.dezignstudio.co.uk
Instagram @dezignstudiouk

Bathrooms & Kitchens

25% discount on complete bathrooms and 50% discount on Quooker booking tap with every kitchen order

104 High Street, Barkingside, Ilford IG6 2DR



Peaches Bubble Tea

<http://peaches-london.co.uk/>
Instagram: @peaches_grp

15% off our entire menu!

639 High Road Ilford IG3 8RG

Spice it Up – South Woodford monthly Market

Instagram: kaysspiceitup

Food spice business offering a chilli garlic and ginger homemade cooking masala.

Offer Buy 2 for £10 (for 100g)

Tutor Doctor Ilford



www.tutordocor.co.uk/ilford

£100 voucher in the attached is for any enrolment for 12 or more hours

One to one and small group tuition in all subjects from Key Stage 1 through to Key stage 5 as well as entrance exams (7+, 11+ and 13+). Tuition provided at student's home/ local library or online.

Improve Your Smile

www.improveyoursmile.co.uk
Instagram - @improveyoursmile
Facebook - ImproveYourSmile



A new patient examination for £75 (normally £100)

Please call the practice on 020 8504 2704 to book in your appointment mentioning Discover Redbridge and the discount.

Woodford House Dental Practice, 162 High Road, Woodford Green, Essex IG8 9EF

Namak Restaurant

20% Discount on total bill including Food & Drink till the end of September

T&C: must order from the A La Carte Menu. This offer does not apply to set menu or weekend Breakfast.

219 High Road, South Woodford London E18 2PB
Tel : 020 8143 0173



Mildmay Nursery



Early Years are Learning Years

Mildmay Nursery offers a warm, welcoming, nurturing and safe learning environment for children aged from 2-4 years old.

Our qualified staff provide a high standard of care and education and we offer the Governments universal and working 15-30 hours funding to all eligible 2, 3, 4 year olds.

Places available from **September**.

Find us at Mildmay Nursery
2-4 Mildmay Road, Ilford IG1 1DT

Contact us to organise a tour:
Phone enquiries **020 8514 0901**
Mobile **07587 101453**

Find out more at
vrcl.uk/mildmaynursery



VISION
REDBRIDGE
CULTURE & LEISURE

Children's Birthday Parties



Host your Child's Birthday at a Vision Venue!

Hall Hire Venues

- Ashton Playing Fields
- Churchill Room - Wanstead Library
- Foxburrows Barn - Hainault Forest
- Lakeside Suite - Fairlop Waters
- Redbridge Central Library
- Redbridge Drama Centre

Venues with Activities

- Owls Play Centre
- Fairlop Outdoor Activity Centre
- Redbridge Cycling Centre

Find out more at
vrcl.uk/children-parties



VISION
REDBRIDGE
CULTURE & LEISURE

Summer Holiday Activities

Join us for a mix of exciting activities this summer!

From fun activities to educational workshops, theatre shows and more! There's always something new to try for children of all ages.



See all summer activities at
visionrcl.org.uk/kidsevents



VISION
REDBRIDGE
CULTURE & LEISURE